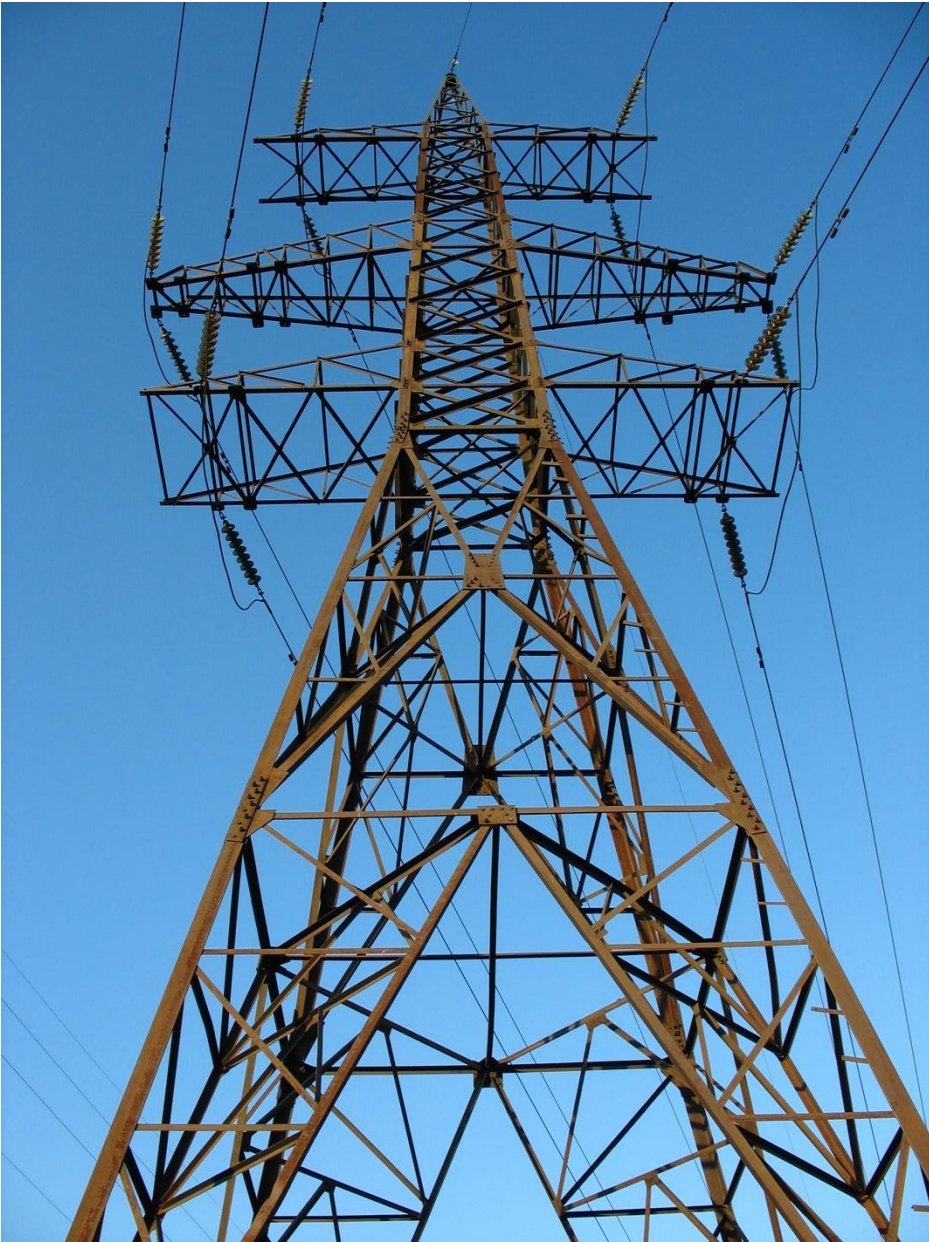


McKean Business Park



Interstate 90 & Route 832 (Sterrettania Road)





Conceptual Load Study

A high-level conceptual load study was performed to review the impact of the McKean Business Park load addition of up to 400 MW served from a new 345 kV substation looping in the existing Erie South – Erie West and Erie West – Wayne 345 kV Lines.

Summary Results

200 MW at a new 345 kV substation looping in the Erie South – Erie West 345 kV Line

- The proposed 345 kV load addition does not contribute to any new thermal or voltage violations to the system in the N-1 or N-1-1 scenarios.

400 MW at a new 345 kV substation looping in the Erie South – Erie West and Erie West – Wayne 345kV Lines:

- The proposed 345 kV load addition does not contribute to any new thermal or voltage violations to the system in the N-1 scenario.
- The proposed 345 kV load addition contributes to thermal violations on the following line due to various contingency pairs in the N-1-1 scenario:
 - East Sayre - North Waverly 115 kV Line
- The proposed 345 kV load addition does not contribute to any new voltage violations to the system in the N-1-1 scenarios.

A DLS would be required if the Customer wishes to move forward with the proposed load addition.

For More Information:

Laith Wardi, CEcD

Economic & Business Development Specialist

1314 Griswold Plaza—Erie PA 16501

814.480.0337 ext. 305

814.397.9384 mobile

www.ecrda.net