

# COLD STORAGE INFITTING SINGLE SWING DOOR

## HINGING:

Hinged on left

Hinged on right

## OPENING CONDITIONS:

Finished Opening Width (W.I.C.): (Max width 60")

Finished Opening Height (H.I.C.): (Max height 84")

Wall Thickness:

Is there a floor/ramp? Yes No

Is there a thermometer? Yes No

If yes, how many inches is it from the jamb:

Is there a light switch? Yes No

If yes, how many inches is it from the jamb:

## TEMPERATURES:

Temperature inside box: degrees F (Please provide)

Temperature outside box: degrees F (Please provide)

## APPLICATION:

4" thick cooler

4" thick freezer

## CLADDING:

Embossed white galvalume

Embossed galvalume

## WINDOW:

None 14" x 14" window (Freezer windows will be heated)

## STRIP DOOR:

Yes

No

## STANDARD DESIGN INCLUDES:

Three sided 1 1/2" x 5 1/2" three sided FRP front frame

Three sided 1" x 5 1/2" HDPE mirror frame

DOE Certification

Soft touch latch w/ padlocking and standard inside release

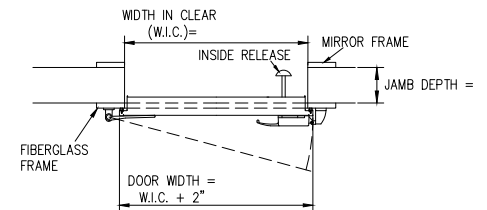
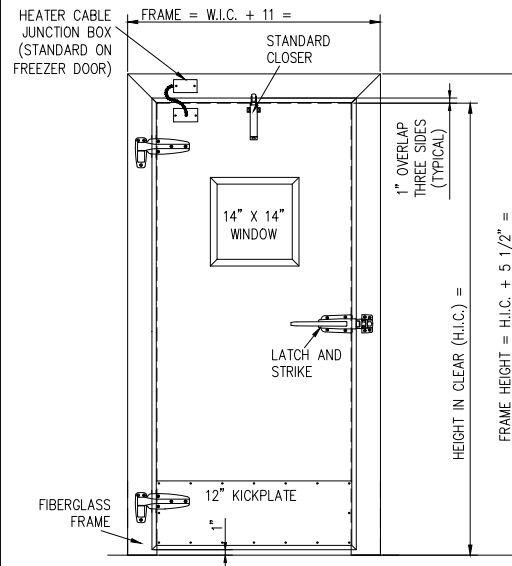
Standard lower chrome hinge

Standard upper chrome spring hinge

Standard duty closer

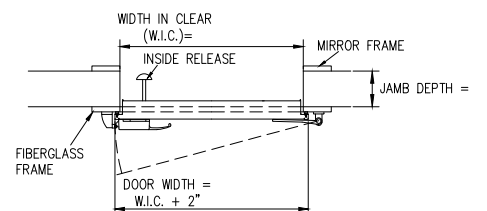
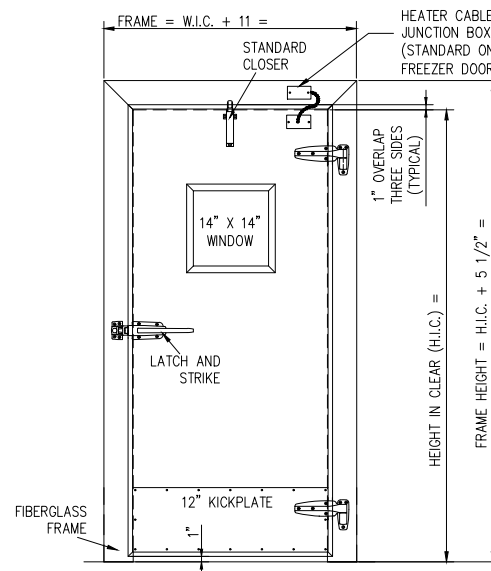
12" tall, 1/16" thick diamond tread kick plates both sides

Freezer doors come with heated frame and bottom bar heat



HORIZONTAL SECTION

HINGED ON LEFT



HORIZONTAL SECTION

HINGED ON RIGHT



JOB			CUSTOMER NO:		NO. PRINTS	FOR	DATE	REVISED
			ORDER NO:					
SOLD TO			DRAWN BY:					
			SHEET OF					