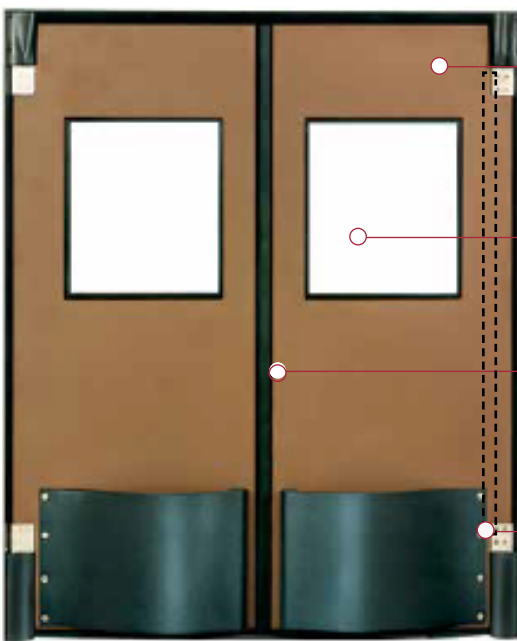


Durulite Standard

Durulite Standard Doors are lightweight, multi-purpose doors built to withstand heavy use from personnel and equipment. Made from rotationally molded polyethylene, they are highly durable—offering 5x greater puncture resistance and 3x more flexibility than ABS. They meet USDA sanitation standards, are NSF certified, and feature a seamless, corrosion-resistant design ideal for washdown environments.



Durulite Standard shown with optional teardrop bumpers

Door Panel – Lightweight, weighing only 2.5 pounds per square foot, it is easy to open, operates smoothly and allows for safe passage of personnel and damage free equipment. The overall panel thickness is 1-7/8", the skin thickness is 1/8" thick and the door can be sized up to 8' x 10'. Rotationally molded polyethylene outer skin retains its properties to -40F.

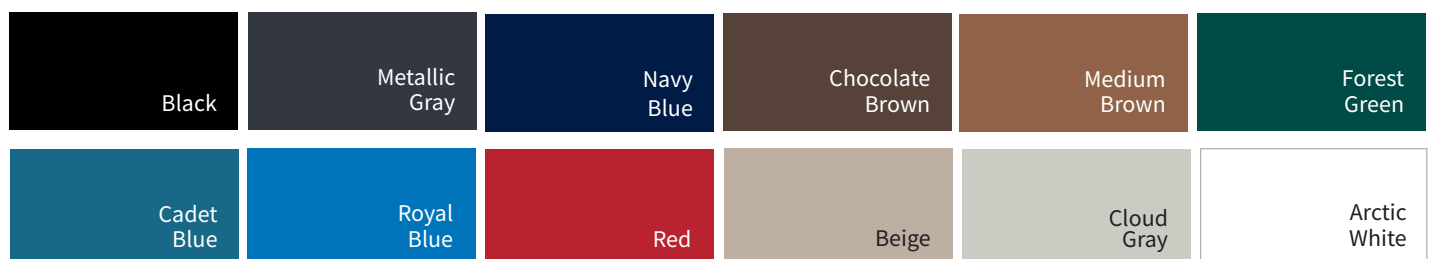
Window – 1/8" thick polycarbonate window with black frame is recessed a minimum of 1/8" from the face of the panel to protect the window surface from abrasion caused by passing loads.

Internal Reinforcement – The leading and back edge of the door are internally reinforced with tubular steel to ensure flatness and strengthen the door panel.

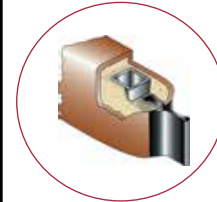
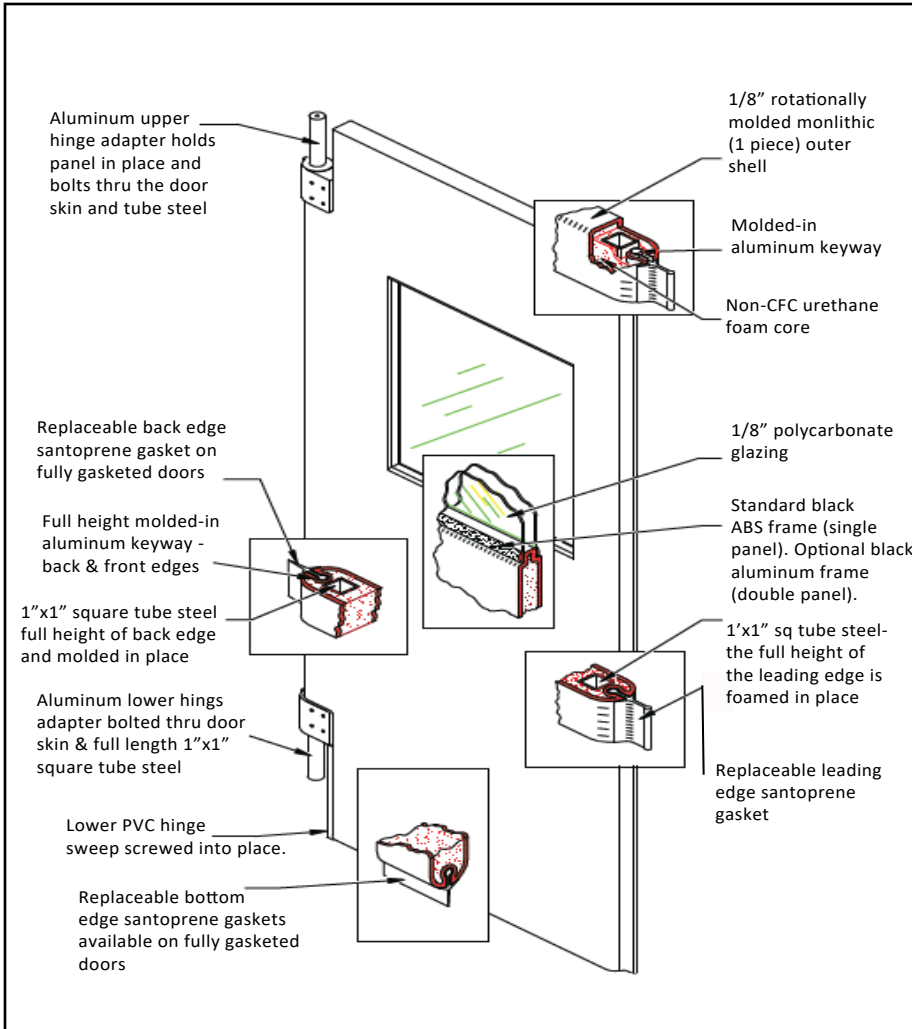
Gasketing – USDA accepted durable gasketing is factory applied without the use of metal strips or fasteners, making it easy to replace in the field.

Designs and Colors

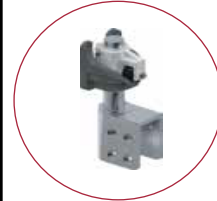
Actual color samples should always be requested if color accuracy or matching is key to your decision.



Durulite Standard



Insulated Core – The foamed-in-place non-CFC urethane core (permanently bonded to the outer surface) does not break down when impacted, provides noise control and provides excellent insulation with an R factor of 10.83.



Upper Hinge – Double-acting V-Cam hinging system operates smoothly and is virtually maintenance free with its permanently lubricated needle bearing roller assembly. Optional stainless steel V-Cam is available.



Bottom Hinge - For additional strength and durability, the hinge is designed with pillow block constructed of zinc-plated ductile iron (stainless steel is optional) with a UHMW sleeve and a solid cast aluminum lower hinge adapter. Plus, the lower hinge adapter has a provision for mounting an optional spring assist.

Applications	Environment
<ul style="list-style-type: none"> • Food Processing • Institutional • Retail • Supermarket • Pharmaceutical • Warehouse 	<ul style="list-style-type: none"> • Cooler • Freezer • USDA Accepted • Personnel • Interior • Loading Dock • Washdown

Options
<ul style="list-style-type: none"> • Lower Hinge Guards • Window Options • Impact/Kick Plates • Teardrop Bumpers • 180° x 90° Hardware • Spring Assist • Locking Devices



Certified

*Only to be used as a secondary door in cold storage applications.