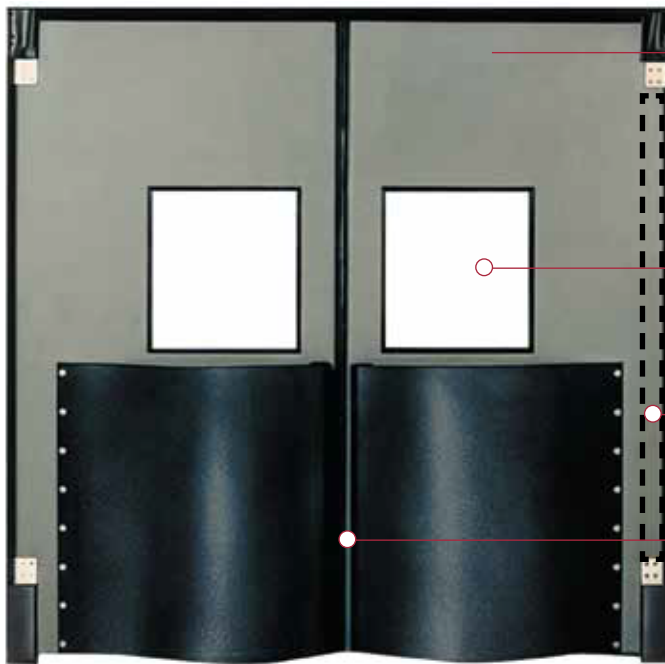


Durulite Industrial Door

The Durulite Industrial Door is engineered for unmatched durability in high-traffic environments. Designed for rugged use, it offers long service life with minimal maintenance across applications—from forklift traffic to refrigerated, USDA, and washdown settings. Its rotationally molded polyethylene construction delivers superior strength, offering up to five times the puncture resistance and three times the flexibility of ABS, while its seamless, corrosion-resistant design ensures optimal performance in sanitary environments.



Door Panel – Lightweight, weighing only 3.5 pounds per square foot, is easy to open, operates smoothly and allows for safe passage of personnel and damage free equipment. The overall panel thickness is 1-7/8", the skin thickness is 1/4" thick and the door can be sized up to a 10' x 10'. Rotationally molded polyethylene outer skins retains its properties to -40°F.

Window – 1/8" thick polycarbonate window with black frame is recessed a minimum of 1/8" from the face of the panel to protect the window's surface from abrasion caused by passing loads.

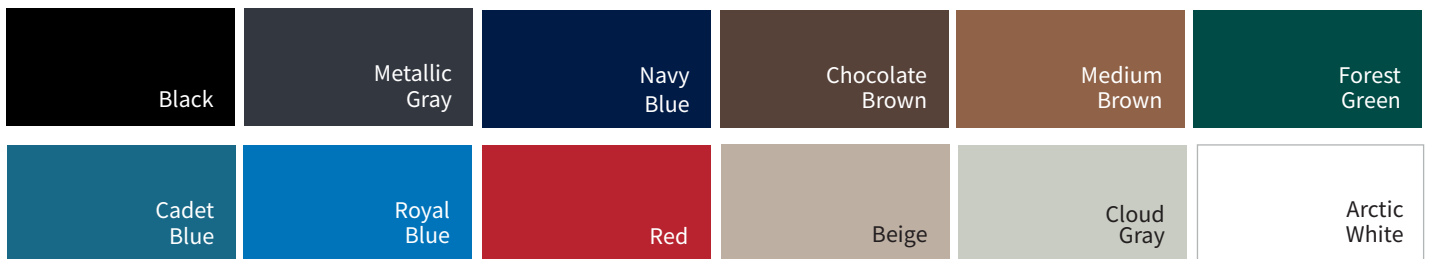
Internal Reinforcement – The leading and back edge of door are internally reinforced with tubular steel to strengthen the door panel.

Gasketing – USDA accepted durable gasketing is factory applied without the use of metal strips or fasteners, making it easy to replace in the field.

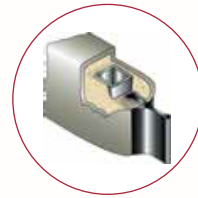
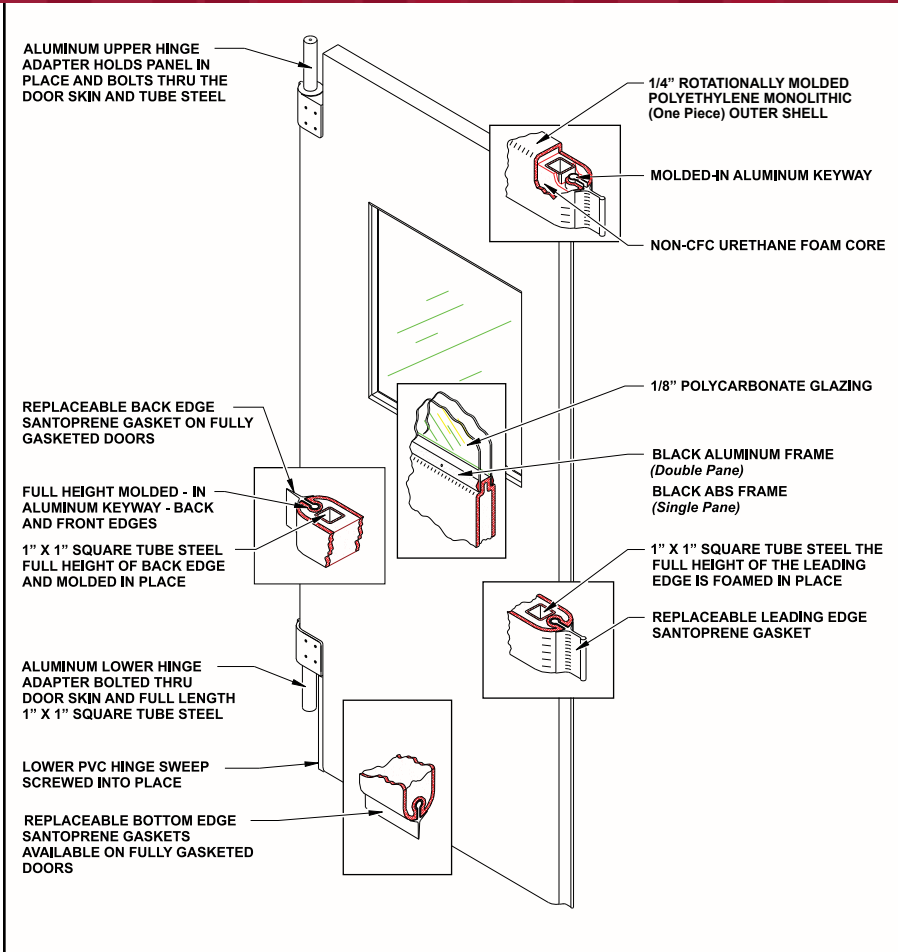
Durulite Industrial shown with optional teardrop bumpers

Designs and Colors

Actual color samples should always be requested if color accuracy or matching is key to your decision.



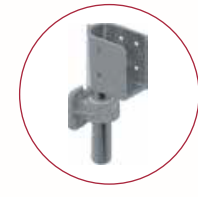
Durulite Industrial Door



Insulated Core – The foamed-in-place Non-CFC urethane core (permanently bonded to the outer surface) does not break down when impacted, provides noise control and excellent insulation with an R factor of 10.83.



Upper Hinge – Double-acting V-Cam hinging system operates smoothly and is virtually maintenance free with its permanently lubricated needle bearing roller assembly. Optional stainless steel V-Cam is available.



Bottom Hinge – For additional strength and durability the hinge is designed with pillow block constructed of zinc plated ductile iron (stainless steel is optional) with a UHMW sleeve and solid cast aluminum lower hinge adapter. Plus the lower hinge adapter has a provision for mounting an optional spring assist.

Applications

- Food Processing
- Industrial
- Institutional
- Pharmaceutical
- Postal
- Cold Storage
- Warehouse

Environment

- Freezer
- Cooler
- USDA Accepted
- Personnel
- Interior

Options

- Window Options
- Impact/Kick Plates
- Teardrop Bumpers
- Lower Hinge Guards
- Spring Assist
- Locking Devices