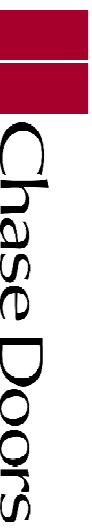
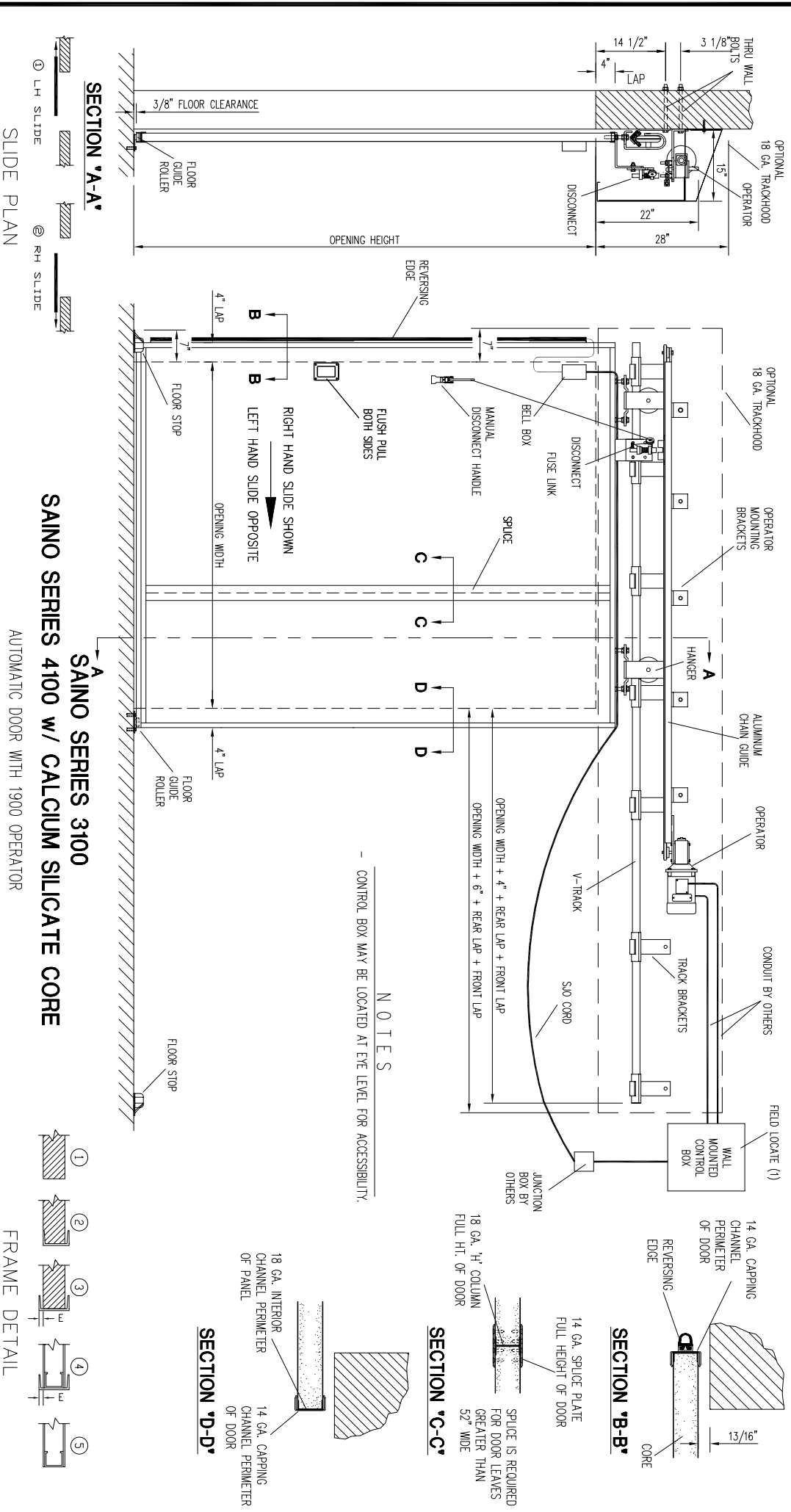


TAG MARK	DOOR TYPE	OPENING WIDTH	OPENING HEIGHT	SLIDE PLAN	FINISH DOOR WIDTH	FINISH DOOR HEIGHT	NO. OF PANELS	WALL THICKNESS	FRAME DETAIL	OPERATOR	NEMA	CLEARANCE REQ'D			TRACK-HOOD	WEATHER-STRIPPING	LOCKING SYSTEM	REMARKS	
												CLS. SIDE	OPNG. SIDE	HEAD					
<p style="text-align: center;">Chase Doors</p> <p>Tel: (800) 543-4455 www.chasedoors.com FAX: (800) 978-6570</p>																			
JOB										CUSTOMER NO:									
SOLD TO										CHASE ORDER NO:									
										DRAWN BY:									
										SHEET ___ OF ___									
										NO. PRINTS									
										FOR									
										DATE									
										REVISED									



Tel: (800) 543-4455
www.chasedoors.com
FAX: (800) 978-6570

JOB

SOLD TO

CUSTOMER NO:

CHASE ORDER NO:

DRAWN BY:

SHEET ___ OF ___

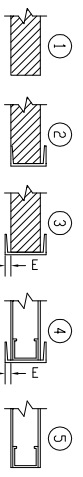
NO. PRINTS

FOR

DATE

REVISED

FRAME DETAIL



18 GA. INTERIOR CHANNEL PERIMETER OF PANEL

14 GA. CARPING CHANNEL PERIMETER OF DOOR

14 GA. SPICE PLATE FULL HEIGHT OF DOOR

SPICE IS REQUIRED FOR DOOR LEAFS GREATER THAN 52" WIDE

14 GA. CARPING CHANNEL PERIMETER OF DOOR

REVERSING EDGE

CORE

13/16"

FIELD LOCATE (1)

CONDUIT BY OTHERS

ALUMINUM CHAIN GUIDE

OPERATOR MOUNTING BRACKETS

OPTIONAL 18 GA. TRACKHOOD

OPTIONAL 18 GA. TRACKHOOD OPERATOR

14 GA. CARPING CHANNEL PERIMETER OF DOOR

SECTION 'B-B'

SECTION 'C-C'

SECTION 'D-D'

NOTES

- CONTROL BOX MAY BE LOCATED AT EYE LEVEL FOR ACCESSIBILITY.

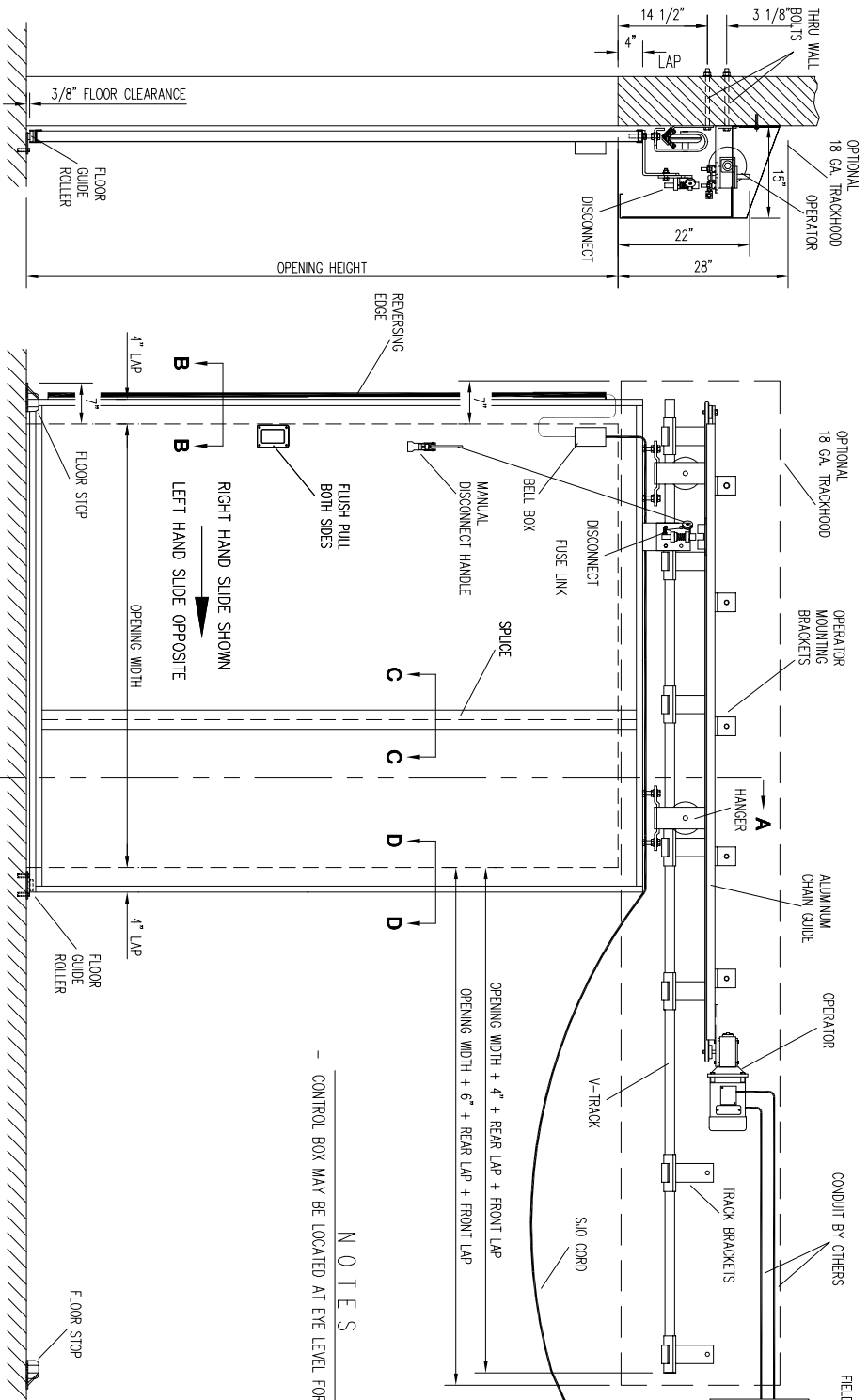
SAINO SERIES 4100 w/ CALCIUM SILICATE CORE

AUTOMATIC DOOR WITH 1900 OPERATOR

SLIDE PLAN



SECTION 'A-A'



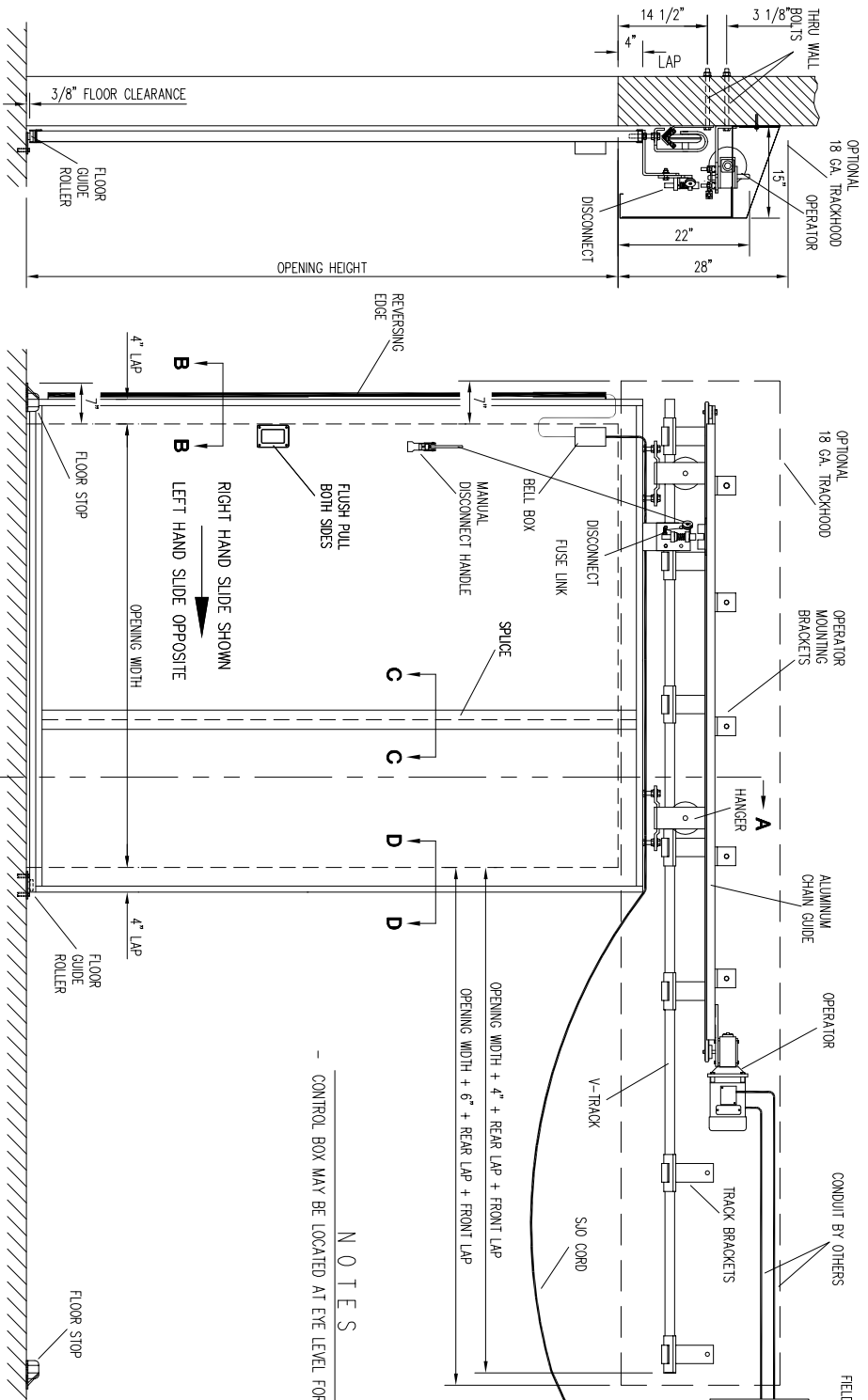
SAINO SERIES 3100

SAINO SERIES 4100 w/ CALCIUM SILICATE CORE

SLIDE PLAN



SECTION 'A-A'



SAINO SERIES 3100

SAINO SERIES 4100 w/ CALCIUM SILICATE CORE

SLIDE PLAN



SECTION 'A-A'

