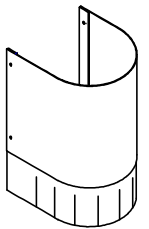
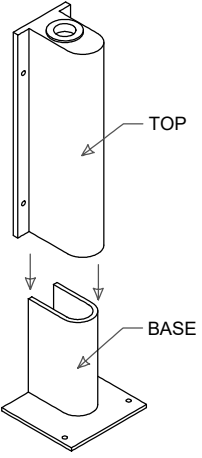


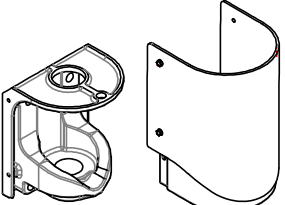
**“Old Style”
Upper Hinge Seal**
 D05KTHS008 (KIT)
 D05PPHSRAP (SEAL ONLY)



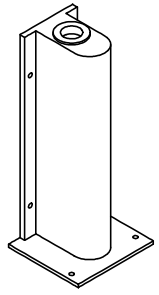
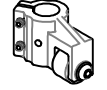
Polyethylene Spring Bumper
 QTY: _____
 Bumper Height: _____
 Opening Width: _____
 Color: _____



Adjustable Hinge Guard
 D05KTADJLH (Alum)
 QTY: _____



Roller Assembly Kit
 D0MKTRP003
 QTY: _____
 (w/ Stainless Steel Bearing)
 D0MKTRP004 QTY: _____



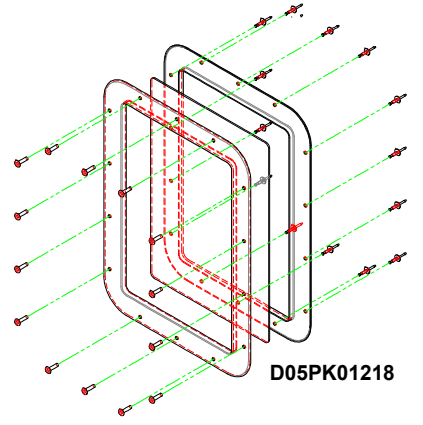
Lower Hinge Guard Kit
 D0MKTRP005 (Alum)
 D0MKTRP006 (SS)
 QTY: _____

Single Pane Window Kits
 Comes With Aluminum Trim (4 pc.) & Fasteners

Size	Part Number	Qty
8" x 14"	D05KT0814W	
12" x 18"	D05PK01218	
16" x 16"	D0MPK01616	
17" x 23"	D0MPK01723	

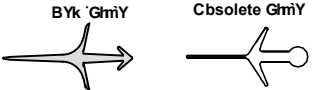
Double Pane Window Kits
 Comes With Aluminum Trim (8 pc.) & Fasteners

Size	Part Number	Qty
8" x 14"	Not Available	
12" x 18"	D0MPK1218D	
16" x 16"	D0MPK1616D	
17" x 23"	D0MPK1723D	



Kick Plates
 Qty: _____
 Single Door or Pair
 Opening Width: _____
 Kick Plate Height: _____
 Stainless Steel
 or
 ABS/HDPE (Color: _____)

Retailer Gasketing
 (Order Per Foot)



1-7/16"

D05GS01628
1628
 (STD Leading Edge Double)
 Feet: _____

2"

D0MGS00719
1535
 (STD Leading Edge Double)
 Feet: _____

3/4"

D05GS16770
1677
 (STD Back Edge) 100"
 Feet: _____

1"

D05GS01182
1613
 (STD Bottom Edge)
 Feet: _____

1-1/16"

D0MGS00870
1560
 (Leading Edge)
 Feet: _____

1-3/16"

D0MGS00686
1558
 (Leading Edge)
 Feet: _____

15/16"

D07GS01525
1525
 (Back Gasket "CUT Retailer")
 Feet: _____

90"

D0NASSTD5W
1557
 (Lower Hinge Sweep)
 Feet: _____

3/4"

D05GS16779
1677
 (STD Back Edge) 90"
 Feet: _____

5/64"

D0MGS01182
1610
 (Bull Nose - Back & Bottom Edges)
 Feet: _____

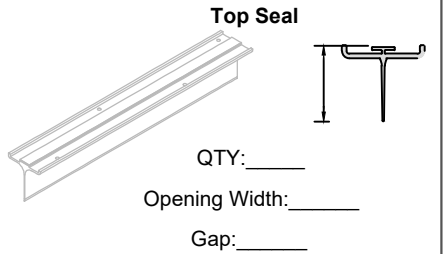
1/8"

D0MGS1559F
1559
 (Leading Edges)
 Feet: _____

ADA Approved Window Kits
 1/8" Poly, Frame & Fasteners (Front & Back - Single Pane ONLY)

Size	Part Number	Qty
10" x 30" ADA	D05KT1030A	
12" x 30" ADA	D05KT1230A	
16" x 30" ADA	D05KT1630A	
20" x 30" ADA	D05KT2030A	
24" x 30" ADA	D05KT2430A	

"Nosing"
 PVC Gasket Retainer for Back & Bottom Edges of Panel (102" Long)
 D05PP0908E
 QTY: _____



Top Seal
 QTY: _____
 Opening Width: _____
 Gap: _____

DURULITE® RETAILER
 90° X 90° Hardware Only

PART REPLACEMENT ORDER FORM

Chase Doors
 A SENNECA COMPANY