

MODEL#: 200 Series

QTY:

FINISHED OPENING:

QUOTE
ORDER

PO#:

STYLE

Double

Single

Left

Right

GASKETING

FULLY GASKETED

* PARTIALLY GASKETED

FRONT

BACK

BOTTOM

SEALS

TOP SEAL

UPPER HINGE SEAL

200 SERIES REQUIREMENTS

90° X 90° HARDWARE
DOUBLE PANE WINDOW
SECURITY BARS IN WINDOW
BUMPER 38" HIGH TEARDROP
COLOR

KICKPLATE 38" HIGH
COLOR

LOWER HINGE GUARD (Aluminum)

TOP CANEBOLTS

BOTTOM CANEBOLTS

2" LOCKING DEVICE

DIRECTIONAL SIGNS

TAMPER PROOF FASTENERS

* 180° X 90° HARDWARE

* SINGLE PANE WINDOW

NO-RISE HARDWARE

LO-RISE HARDWARE

WELD PLATES

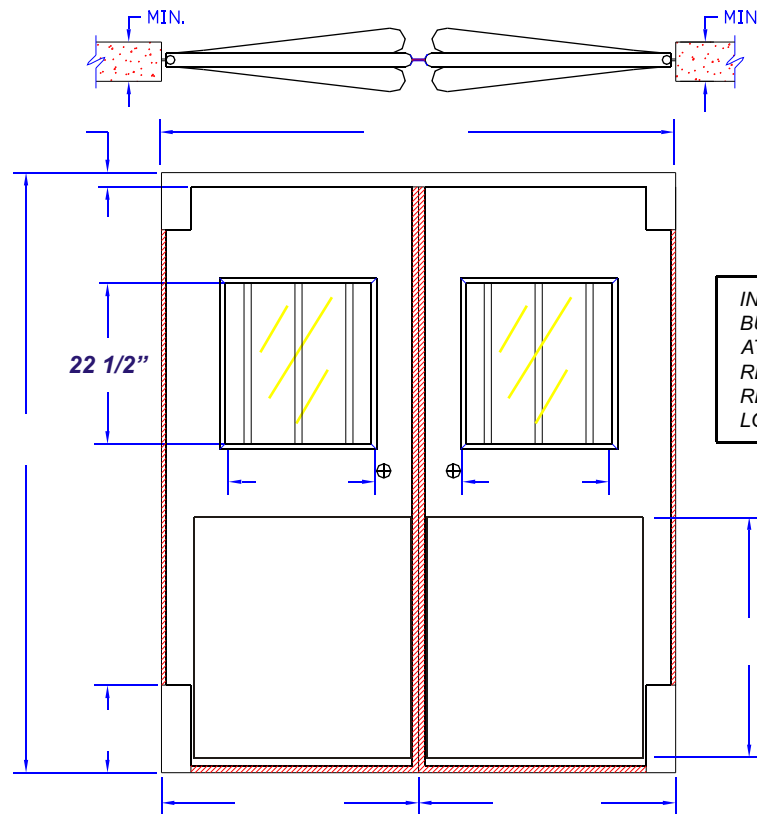
* NOT A 200 SERIES OPTION

FLOW CHART: IF THIS BOX IS CHECKED OR YOU ARE USING MORE THAN ONE COLOR OF BUMPER/KICKPLATE, PLEASE FILL OUT THE ADJACENT FLOW CHART.

WRITE IN COLOR OF BUMPERS/KICKPLATES.

INDICATE WHICH SIDE OF OPENING CANEBOLTS ARE TO BE LOCATED ON BY CHECKING THE APPROPRIATE BOX.

NOTES:



INDUSTRIAL DOORS WITH
BUMPERS, SEE
ATTACHMENT FOR
RECOMMENDED OR
REQUIRED POST
LOCATIONS.

38" Height Required
on All Bumpers and
Kickplates for
200 Series Doors

BUMPER/KICKPLATE COLOR	CANE BOLT SIDE	BUMPER/KICKPLATE COLOR	BUMPER/KICKPLATE COLOR	CANE BOLT SIDE	BUMPER/KICKPLATE COLOR
BUMPER/KICKPLATE COLOR	CANE BOLT SIDE	BUMPER/KICKPLATE COLOR	BUMPER/KICKPLATE COLOR	CANE BOLT SIDE	BUMPER/KICKPLATE COLOR
BUMPER/KICKPLATE COLOR	CANE BOLT SIDE	BUMPER/KICKPLATE COLOR	BUMPER/KICKPLATE COLOR	CANE BOLT SIDE	BUMPER/KICKPLATE COLOR
BUMPER/KICKPLATE COLOR	CANE BOLT SIDE	BUMPER/KICKPLATE COLOR	BUMPER/KICKPLATE COLOR	CANE BOLT SIDE	BUMPER/KICKPLATE COLOR

DATE



Chase Doors

World's Leading Manufacturer Of Traffic Doors

Cincinnati Ohio, and Redmond Oregon • www.chasedoors.com

Phone Toll Free: 1-800-543-4455 • FAX: 1-800-978-6570

TO:

JOB:

DURULITE SECURITY DOOR SHOP DRAWING