

ELECTRIC VERTICAL LIFT DOOR

TYPE & THICKNESS OF DOOR:

COOLER FREEZER 4" THICK 6" THICK

OPENING SIZE:

FINISHED OPENING WIDTH (W.I.C.):
FINISHED OPENING HEIGHT (H.I.C.): WALL THICKNESS:

ENTER ROOM TEMPERATURES:

TEMPERATURE WALL SIDE: F (PLEASE PROVIDE)
TEMPERATURE TRACK SIDE: F (PLEASE PROVIDE)

CLADDING - TRACK SIDE:

EMBOSSSED WHITE GALVALUME	SMOOTH WHITE GALVALUME
EMBOSSSED BLACK GALVALUME	SMOOTH GALVALUME
EMBOSSSED GALVALUME	STAINLESS STEEL, #4 FINISH
EMBOSSSED WHITE ALUMINUM	
EMBOSSSED MILL ALUMINUM	
CUSTOM	

CLADDING - WALL SIDE:

EMBOSSSED WHITE GALVALUME	SMOOTH WHITE GALVALUME
EMBOSSSED BLACK GALVALUME	SMOOTH GALVALUME
EMBOSSSED GALVALUME	STAINLESS STEEL, #4 FINISH
EMBOSSSED WHITE ALUMINUM	
EMBOSSSED MILL ALUMINUM	
CUSTOM	

VISION WINDOW:

HEATED NON-HEATED 14" x 14" 14" x 24"

KICK PLATE - TRACK SIDE:

1/16" DIAMOND PLATE	1/8" DIAMOND PLATE	STAINLESS STEEL
12" TALL 24" TALL	36" TALL 48" TALL	Other:

KICK PLATE - WALL SIDE:

1/16" DIAMOND PLATE	1/8" DIAMOND PLATE	STAINLESS STEEL
12" TALL 24" TALL	36" TALL 48" TALL	Other:

CASINGS AND HEADER:

TRACK SIDE:

MOLDED PLASTIC POLYMER (MPP) METAL CLAD MPP

MIRROR SIDE:

MOLDED PLASTIC POLYMER (MPP) METAL CLAD MPP

THRU WALL:

MOLDED PLASTIC POLYMER (MPP) METAL CLAD MPP
1" CAREFREE 1.5" CAREFREE

COUNTER BALANCE SYSTEM:

WEIGHTS
TORSION SPRINGS

OPERATOR:

INDUSTRIAL DUTY 3/4 HP JACKSHAFT OPERATOR
INDUSTRIAL DUTY 3/4 HP JACKSHAFT OPERATOR, (WATER TIGHT, OIL TIGHT)

VOLTAGE:

115/1/60	230/1/60	208/3/60
230/3/60	460/3/60	575/3/60

CONTROLS:

STEP CONTROL (PULL TO OPEN, PULL TO CLOSE)
TIMER TO CLOSE (PULL TO OPEN, TIME DELAY TO CLOSE)
3-BUTTON CONTROL (OPEN, CLOSE, STOP)

SAFETY DEVICES:

SINGLE SAFETY BEAMS

ACTUATION:

PULL CORD ON BOTH SIDES
NOTE: HEATED PULL CORD STANDARD FOR FREEZER DOORS.
3-BUTTON STATION, NEMA 1 QTY:
3-BUTTON STATION, NEMA 4 QTY:
RADIO TRANSMITTER AND RECEIVER QTY:
MOTION SENSOR QTY:
BY OTHERS

LOCKING:

LOCK TRACK SIDE
LOCK TRACK SIDE, CYLINDER OPPOSITE, T-HANDLE BOTH SIDES

ADDITIONAL OPTIONS:

CHAIN HOIST
ELEVATED COOLER/FREEZER FLOOR FLOOR THICKNESS:
JAMB WALL CAPS, NO INSERTS JAMB WALL CAPS WITH INSERTS
OUTER WIDTH: OUTER HEIGHT: INSET:



Tel: (800) 543-4455 www.chasedoors.com FAX: (800) 978-6570

JOB		CUSTOMER NO:		NO. PRINTS	FOR	DATE	REVISED
		CHASE ORDER NO:					
		DRAWN BY:					
	SOLD TO		SHEET	OF			

ELECTRIC VERTICAL LIFT DOOR

WICKET DOOR OPTIONS

SIZING:
 WIDTH: **HANDING:**
 HINGED ON LEFT
 HEIGHT: HINGED ON RIGHT

HINGE DETAILS:
 STANDARD CHROME STANDARD WHITE
 STAINLESS STEEL
 HINGE QTY:

PULL SIDE LATCH DETAILS:
 CHROME K-56 W/ PADLOCKING CHROME K-56 W/ KEY LOCK
 SOFT TOUCH W/ PADLOCKING SOFT TOUCH W/ KEY LOCK
 STAINLESS W/ PADLOCKING STAINLESS W/ KEY LOCK
 WHITE K-56 W/ PADLOCKING WHITE K-56 W/ KEY LOCK

PUSH SIDE LATCH DETAILS:
 RECESSED INSIDE RELEASE

CLOSER:
 STD CLOSER
 HEAVY DUTY CLOSER
 HEAVY DUTY CLOSER, SS

APPLICATION (REQUIRED):

- | | | | |
|----|---|-----|----|
| 1. | IS THIS DOOR ON A BOX GREATER THAN 3000 SQ FEET? | YES | NO |
| 2. | IF NO, IS BOX LOCATED IN COLD STORAGE FACILITY/ATMOSPHERE WITH FLOOR AREA 3000 SQ FEET OR LARGER? (A/C IS NOT COLD STORAGE) | YES | NO |
| 3. | DOES THIS APPLICATION INVOLVE MEDICAL, SCIENTIFIC, OR RESEARCH FACILITIES? | YES | NO |

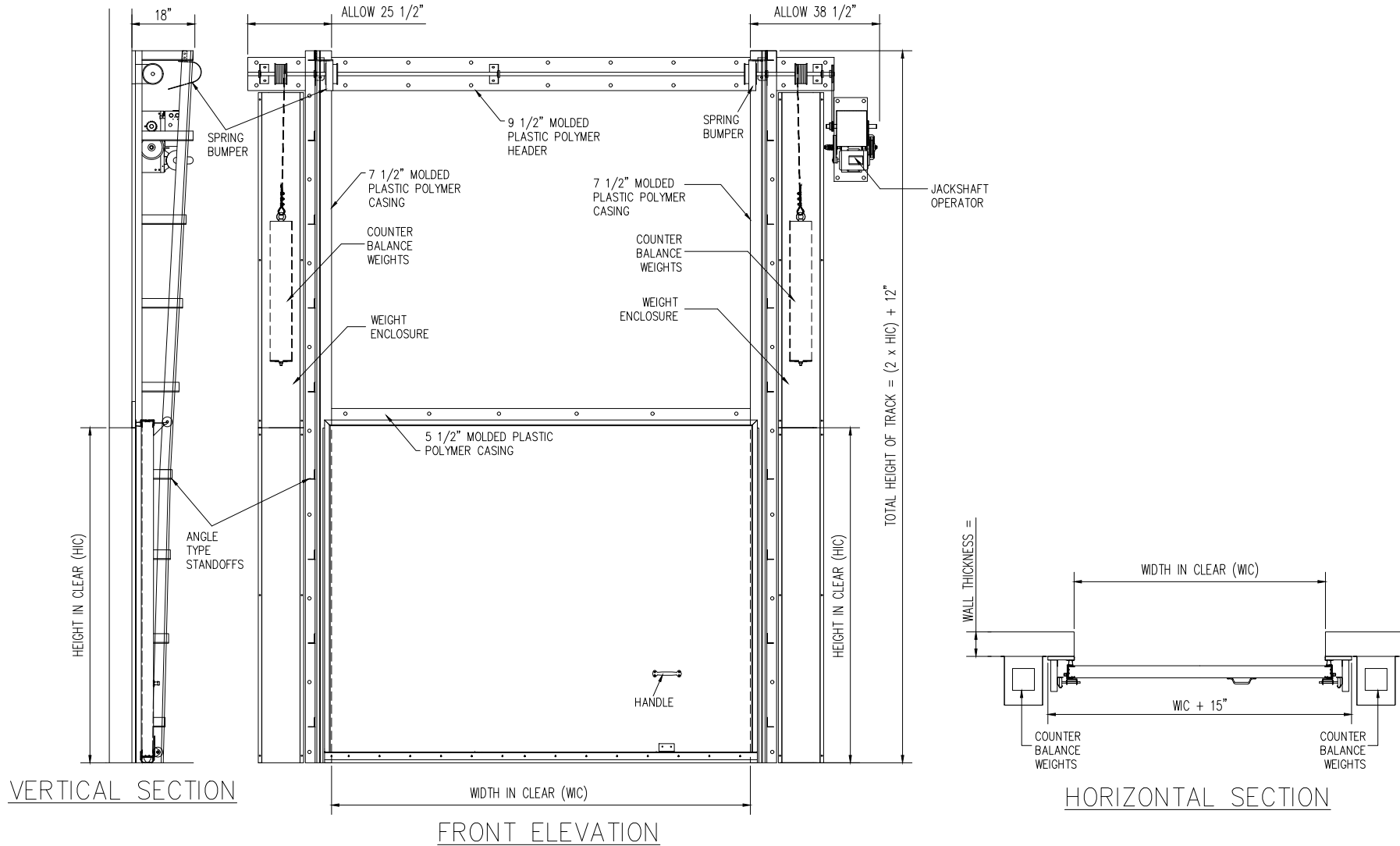
SPECIAL INSTRUCTIONS TO MANUFACTURER:



Tel: (800) 543-4455 www.chasedoors.com FAX: (800) 978-6570

JOB		CUSTOMER NO:		NO. PRINTS	FOR	DATE	REVISED
		CHASE ORDER NO:					
SOLD TO		DRAWN BY:					
		SHEET	OF				

ELECTRIC VERTICAL LIFT DOOR



JOB		CUSTOMER NO:		NO. PRINTS	FOR	DATE	REVISED
	SOLD TO		CHASE ORDER NO:				
		DRAWN BY:					
		SHEET	OF				