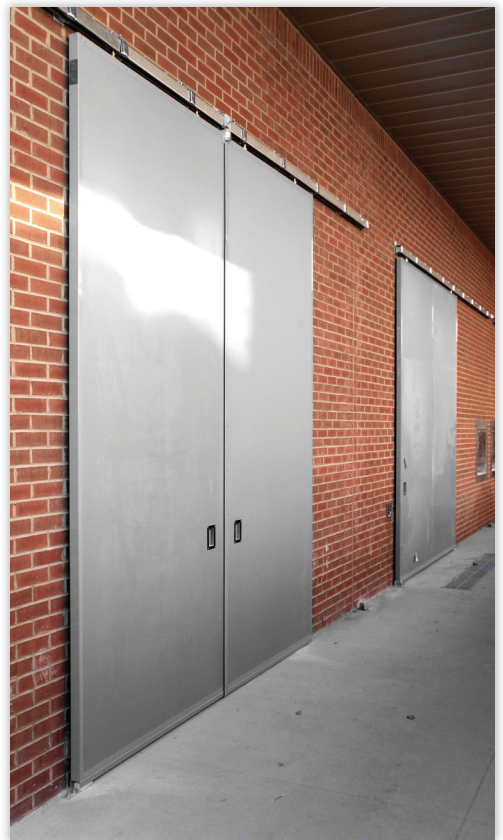




 **Chase Doors**  
World's Leading Manufacturer of Specialty Doors

**Saino<sup>®</sup> Doors**  
*Sliding Fire Door Systems*  
*Industrial Sliding Door Systems*  
*Specialty Sliding Door Systems*



# Saino<sup>®</sup> Sliding Fire Door Systems

Since 1899, the Saino brand has been a recognized leader in the industrial door market. Saino sliding fire and service door systems are custom manufactured by Chase Doors. Chase Doors offers a complete line of Saino door systems that are designed for use in warehouses, distribution centers, industrial environments, processing plants, manufacturing facilities, parking garages, convention facilities and pharmaceutical facilities to name a few. No matter what Saino model you choose, Chase Doors' manufacturing capabilities and exceptional customer service has empowered Chase Doors to earn a reputation for high quality products that are reliable, durable, and competitively priced.



## ***Attention to Detail***

Chase Doors offers superior design and engineering processes which enhance the functionality, durability, and life of its products. Chase's team of in-house engineers and customer service professionals work with you every step of the way throughout the order process to ensure accuracy before sending the door to production. A seasoned production team, including experienced craftspeople are cross trained to perform a variety of duties ensuring that Chase can meet customer demand with minimal disruption. The Saino production facility is supported by a vertically integrated manufacturing operation including CNC stamping, metal bending and shearing stations, a welding station, track and operator sub-assembly station and final assembly operation with final quality assurance procedures.

## ***Custom Designed for Your Application***

From modular construction manual sliding door systems to microprocessor controlled automated barrier systems, we'll design a system to suit your needs. Saino doors can be used in both single slide and center parting applications with up to 4 hour UL labels making them acceptable for most applications requiring fire barriers. Chase is the only manufacturer that has the ability to provide a power operated fire door with a 12" headroom clearance. Let us put over a 100 years of experience to work for you!

## ***The Saino Advantage***

- UL & FM labeled fire doors designed for use in washdown applications
- "Smart" Microprocessor drive systems with a broad range of capabilities
- Process room doors with flush panel construction
- Pre-assembled, casing mounted drive systems for simplified field installation
- A wide variety of panel finishes including stainless steel, fiberglass, Kydex and Polyethylene
- Come standard with high quality hardware and stainless steel pull handles to ensure longer door life & minimal maintenance.
- Chase is the only manufacturer that has the ability to provide a power operated fire door with a 12" headroom clearance.





# Chase Saino® Fire Doors

## Listed and Labeled Construction

Saino Fire Doors can be rated for openings that require up to a 4-hour label. Saino Fire Doors are UL approved and FM available. Temperature rise labels are also available, providing an added level of safety in areas where personnel are present. All Saino listed and labeled operators comply with ANSI standards.



## Multi-Purpose Door

All Saino Door Systems can be automated, allowing the door to be used as a functional door system as well as a fire door. This two-in-one feature reduces the cost of providing multiple door systems in a single opening and insures that the door will be operational in the unlikely event of a fire. All Saino fire door operators are listed and labeled for use as an automatic closure device. Automated fire doors can be connected to a central fire system, increasing personnel safety and minimizing potential damage caused from fires.

## Standby Battery Closing System

Saino automated fire door systems come complete with a self-contained, standby power supply. The closing system allows a horizontal sliding door system to be used as an approved means of egress in many applications. Saino sliding fire doors can also be equipped with pass doors including multiple doors for double egress.

	Fire Rated Models				
	1000	2000	3000	4000	50000
<b>Mounting Options</b>					
Casing Mounted					X
Direct Wall Mount	X	X	X	X	
<b>Available Door Finish</b>					
Stainless Steel	X	X	X	X	X
Galvanized	X	X	X	X	X
Prime Painted	X	X	X	X	X
<b>Door Core</b>					
Honeycomb Core	X		X		
Calcium Silicate Core		X		X	
Fiberglass Core					X
Mineral Wool Core	X		X		X
<b>Track Hardware</b>					
Box Track	X	X			
Easy Roll Track			X	X	
STEL Track					X

# Economical Sliding Fire Door Systems

Saino Model 1000 and 2000 are designed for use in applications requiring economy in a manual fire door. They are custom manufactured and available in single slide or center parting with UL and FM label ratings of 20 minutes to 4 hours. Standard features include automatic close system with thermal heat detectors, stainless steel pull handles and low maintenance, heavy-duty hardware. These rugged doors are easy to install and maintain, ensuring years of worry free service.



Saino Model 1000 with 1900 operator with explosion proof motor & intrinsically control mounted in NEMA-12 Control Box.

## ***Saino Model 1000 Sliding Fire Door***

- Incorporates modular panel construction with Kraft honeycomb core securely bonded to 20 gauge cold rolled face sheets and 18 gauge interior framing channels.
- The panels are assembled with heavy-duty 14 gauge capping channel and a 10 gauge bottom guide roller channel, creating a highly durable perimeter framework.
- Doors are shipped prime painted with a high quality gray rust resistant paint. Optional finishes include galvanized prime painted or stainless steel.
- The door is equipped with box track hardware, a weight type closing system and thru wall linkage. All hardware is UL labeled and prime painted.

## ***Saino Model 2000 Sliding Fire Door***

- Incorporates modular panel construction with a calcium silicate core, for a 250°F temperature rise rating, securely bonded to 20 gauge cold rolled face sheets and 18 gauge interior channels.
- The panels are encased in heavy-duty 14 gauge perimeter channel and a 10 gauge bottom guide roller channel, creating a highly durable perimeter framework.
- Doors are shipped prime painted with a high quality gray rust resistant paint. Optional finishes include galvanized prime painted or stainless steel.
- The door is equipped with box track hardware, a weight type closing system and thru wall linkage. All hardware is UL labeled and prime painted.



Saino Model 2000 shown with optional F1900 Operator & Pass Doors.

## ***Box Track Hardware***

Box track hardware offers an economical solution for fire door requirements. Durable box track hardware is constructed out of 12 gauge steel for years of trouble free service. An optional hood cover is available.

## ***Common Options for Saino 1000 & 2000 include:***

- F1900 Fire Door Operator
- Locking Devices
- Panic Hardware
- Pass Doors and Vision Panels
- Monorail Cutouts
- Reel Closing System
- Track Hoods
- Galvanized or Stainless Finish
- Perimeter Gasketing
- Crush Plates
- Control Speed Closing
- Heat Detectors

# Easy Roll Sliding Fire Door Systems

Saino Model 3000 and 4000 are designed for high usage applications. Both models are custom manufactured and available in single slide or center parting with UL and FM label ratings of 20 minutes to 4 hours. Standard features include automatic close system with thermal heat detectors and Easy Roll hardware system.



Saino Model 3000 with optional pass door.

## **Saino Model 3000 Sliding Fire Door**

- Incorporates modular panel construction with Kraft honeycomb core securely bonded to 20 gauge cold rolled face sheets and 18 gauge interior framing channels.
- The panels are assembled with heavy-duty 14 gauge capping channel and a 10 gauge bottom guide roller channel, creating a highly durable perimeter framework.
- Doors are shipped prime painted with a high quality gray rust resistant paint. Optional finishes include galvanized prime painted or stainless steel.
- The door is equipped with a weight or reel type closing system (control speed closing optional) 2" x 2" x 3/8" angle track system, 5-1/4" diameter wheels and thru wall linkage. All hardware is UL labeled and prime painted.

## **Saino Model 4000 Sliding Fire Door**

- Incorporates modular panel construction with a calcium silicate core, for a 250°F temperature rise rating, securely bonded to 20 gauge cold rolled face sheets and 18 gauge interior channels.
- The panels are encased in heavy-duty 14 gauge perimeter channel and a 10 gauge bottom guide roller channel, creating a highly durable perimeter framework.
- Doors are shipped prime painted with a high quality gray rust resistant paint. Optional finishes include galvanized prime painted or stainless steel.
- The door is equipped with a weight or reel type closing system (control speed closing optional) 2" x 2" x 3/8" angle track system, 5-1/4" diameter wheels and thru wall linkage. All hardware is UL labeled and prime painted.

## **Easy Roll Hardware**

Easy Roll hardware system gives the Saino 3000 and 4000 door the lowest friction of any fire door on the market. The Easy Roll system can be motorized without additional track hardware. An optional hood is available.

## **Common Options for Saino 3000 & 4000 include:**

- F1900 Fire Door Operator
- Pass Doors and Vision Panels
- Track Hoods
- Perimeter Gasketing
- Control Speed Closing
- Locking Devices
- Monorail Cutouts
- Galvanized or Stainless Finish
- Stainless Steel Hardware
- Crush Plates
- Heat Detectors
- Panic Hardware
- Spark Resistant Hardware



# Casing Mounted Sliding Fire Door



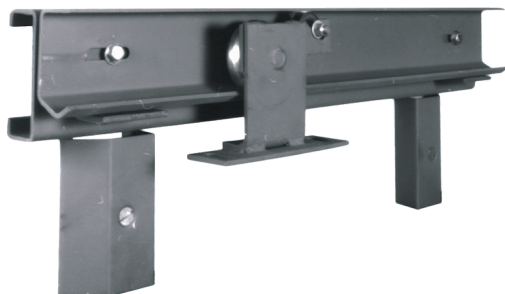
Saino Model 50000 shown with optional pass doors and windows.

Saino 50000 casing mounted fire doors are an excellent choice for applications with high usage and where appearance is important. The casing mounted design provides adequate spacing on both sides of the panel to install surface-mounted hardware for handicap access while allowing a portion of the weight of the door to be transferred to the floor. Standard features include a 20 minute to a 4 hour rating, low headroom track system, concealed binders, full perimeter gasketing and a track hood.

- Ruggedly constructed with 12 gauge welded channels and 18 gauge surface welded face sheets.
- The standard core material is fiberglass
- A 14 gauge perimeter capping channel encloses the panel and eliminates surface-mounted fasteners.
- The pre-mounted casing system reduces installation time and improves the sealing capability of the door system. Pass door panic devices can be mortised for use on the wall side of the fire door, allowing for double egress.
- The standard door ships galvanized prime painted. Optional stainless steel finish is available upon request.

## ***STEL Track Hardware***

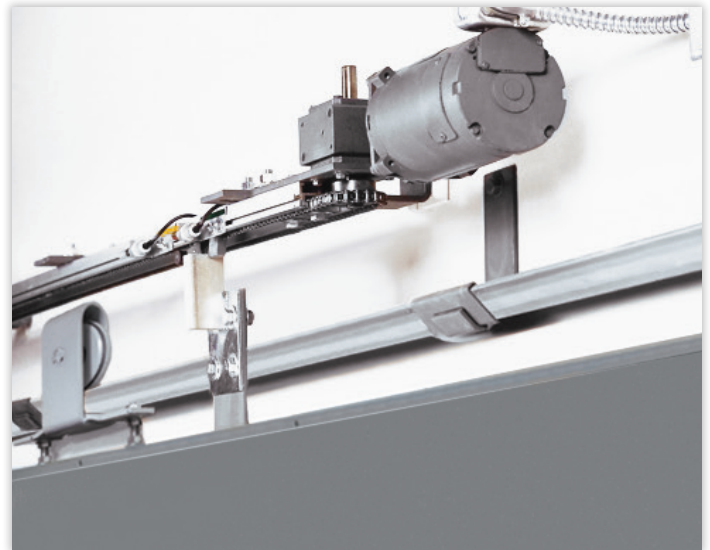
All hardware is UL listed and labeled. The 50000 is equipped with a standard weight type closing system, 7 gauge header casing and STEL track system. The STEL track system is an excellent alternative for low headroom applications. This door system is designed to provide years of trouble free service in high frequency applications. Like all Saino fire door systems, the 50000 can be motor operated.



# Fire Door Options



F1900-PLC high speed operators are an excellent alternative to weight and reel closing systems. They have an adjustable opening speed of up to 24" per second per panel, allowing traffic to pass unimpeded. All systems are equipped with two speed operation, allowing the operator to slow down at the end of the door's travel. This feature adds life to the door system and provides an added measure of safety. The Model F1900-PLC is equipped with a battery backup system, which keeps the closing system functional in the event of a power failure. The door can be opened with the battery for egress, provided the temperature has not exceeded 194°F on either side of the opening. When the emergency situation is resolved and power is returned to the door, the door system functions as normal. Traditional fire door systems are designed to close and remain closed when activated. The F1900-PLC fire door system automates the door for everyday use and ensures that the system remains operational at all times.



## ***EasyTest Fire Door Test System***

EasyTest is a fire door testing system for sliding fire doors. EasyTest allows the door to be tested regularly without having to replace fuse links and reset cables and chains. National Fire Codes require that all fire doors are tested annually. With the simple flip of a handle, the EasyTest System simulates a fuse link separation, allowing the door to close. Reset the handle and push the door to the full open position. The system is ready and you can be confident it will function in an emergency situation.

# Industrial Sliding Service Doors

Chase manufacturers' non-label Saino sliding door systems to the same high standards that are maintained for fire door systems. Chase door systems incorporate modular design with the latest technology, insuring that all door systems are both functional and cost effective. Every system is designed and manufactured to meet your exact requirements. All Chase doors can be operated manually, or be equipped with a variety of drive systems including microprocessor controlled operators that can be connected to process control or monitoring equipment. Manual door systems can be equipped with an automatic closing system that provides a positive closure at controlled speeds, insuring effective environmental control and personal safety.

## ***Saino Model 61000 Casing Mounted Sliding Service Door***

Saino 61000 casing mounted sliding service doors are an excellent choice for applications with high usage and where appearance is important. These attractive doors provide a clean appearance and ensures a positive seal when the door is closed. The panels are constructed with 20 gauge cold rolled face sheets bonded to Kraft honeycomb core (optional urethane core) and 18 gauge interior channels. Available in single slide and center parting configurations. Doors ship prime painted with a high quality gray rust resistant paint. The 61000 door system operates on the TX-1 operator, which is designed to provide years of smooth, trouble-free service. The TX-1 operator requires the least head room of any industrial door system available. Pre-mounted components minimize field assembly time and reduce the possibility of installation errors.



Saino Model 61000 shown with standard vision panels.

Non-Fire Rated Models						
	1100	3100	61000	67000	73000	77000
<b>Mounting Options</b>						
Casing Mounted			X	X	X	X
Direct Wall Mount	X	X				
<b>Available Door Finish</b>						
Stainless Steel	X	X			X	
Galvanized	X	X	X			
Prime Painted	X	X	X			
Kydex				X		X
Fiberglass				X		X
<b>Door Core</b>						
Honeycomb Core	X	X	X	X	X	X
Urethane	X	X	X	X	X	X
<b>Track Hardware</b>						
Box Track	X					
Easy Roll Track		X				
TEP Track			X	X	X	X



# Industrial Sliding Service Doors

Chase Saino sliding door models 3100 and 1100 offer options that will satisfy almost any non-labeled sliding door application, including warehouse doors, doors with high wind load, or wall openings that provide access to oversized manufacturing equipment. Available in single slide or center parting configurations.



Saino Model 3100 shown with optional track hood.

## ***Saino Model 1100 Sliding Service Door***

- The Model 1100 is an economical manual sliding door system.
- Incorporates modular panel construction with Kraft honeycomb core securely bonded to 20 gauge cold rolled face sheets and 18 gauge interior framing channels. Panels over 52" wide are connected with surfaced applied splice plates for easy installation.
- The panels are assembled with heavy-duty 14 gauge capping channel and a 10 gauge bottom guide roller channel, creating a highly durable perimeter framework.
- Doors are shipped prime painted with a high quality gray rust resistant paint. Optional finishes include galvanized prime painted or stainless steel.
- The door is equipped with box track hardware, a weight type closing system and thru wall linkage. Heavy-duty hardware is available for large openings or motorized doors.

## ***Options***

- 1900 Operator
- Galvanized and prime painted or stainless steel
- Pass door
- Vision panels
- Track hood

## ***Saino Model 3100 Sliding Service Door***

- The Model 3100 is an excellent choice for high use applications requiring easy operation.
- Incorporates modular panel construction with Kraft honeycomb core securely bonded to 20 gauge cold rolled face sheets and 18 gauge interior framing channels. Panels over 52" wide are connected with surfaced applied splice plates for easy installation.
- The panels are assembled with heavy-duty 14 gauge capping channel and a 10 gauge bottom guide roller channel, creating a highly durable perimeter framework.
- Doors are shipped prime painted with a high quality gray rust resistant paint. Optional finishes include galvanized prime painted or stainless steel.
- The door is equipped with the Easy Roll hardware system, which offers the lowest friction of any service door. The system consists of 2" x 2" x 3/8" angle track, heavy-duty hangers with 3/8" x 3-1/2" hanger frames, 5-1/4" diameter wheels and precision ball bearings. The track door system can be motorized without additional track hardware.

- Monorail cutouts
- Gaskets
- Locking devices
- Dual durometer blade weatherstripping

# Specialty Casing Mounted Sliding Service Doors

Pharmaceutical process areas, food manufacturing and clean rooms have specific requirements that many door systems can not meet. Environmental control, cleanability with harsh chemicals and high tech automation are required to ensure product quality and manufacturing efficiency. Chase DuruSlide™ 67000 and 77000 series door systems are built with these requirements in mind and are built to your exact specifications. Chase DuruSlide door systems are designed to comply with entrapment and egress codes as well as local and national building standards.

All DuruSlide door systems incorporate modular design with the latest technology, ensuring that all door systems are both functional and cost effective. Every system is designed and manufactured to meet your exact requirements. Features including flush panel construction, sloped track hoods, sloped or flush window frames, stainless steel flush pull handles, and a concealed lower door guide system ensure that all DuruSlide door systems are both beautiful and functional.

DuruSlide doors can be operated manually or be equipped with a variety of drive systems including microprocessor controlled operators that can be connected to process control or monitoring equipment. Manual door systems can be equipped with an automatic closing system that provides a positive closure at controlled speeds, ensuring effective environmental control and personal safety. Available in single slide or center parting configurations.



## ***DuruSlide 67000K Kydex Sliding Door***

- The 67000K door systems incorporate modular panel and is intended for interior applications only. The 67000K is perfect for large size openings and areas that have high positive or negative air pressure.
- The panel is fabricated using a 16 gauge internal welded steel tube framework allowing the panels to be manufactured to virtually any size.
- The standard core is resin impregnated Kraft honeycomb with optional urethane insulation available.
- The panel finish is impact resistant Kydex® that has a high gloss finish and meets UL 94V, 5v and FAR 25.853a for fire retardancy. Standard color is white and 13 additional colors are available.
- Stainless steel capping channels, on three sides, are recessed into panels providing flush construction.
- Gray full perimeter gasketing ensures a tight seal.
- Breakaway door panel for Egress applications is available on the 67000K.

## ***DuruSlide 67000F Fiberglass Sliding Door***

- The 67000F sliding door system incorporates a modular panel with fiberglass construction. The fiberglass panel is highly durable with no seams, gaps or potential failure points ensuring beautiful aesthetics and a long panel life for both interior and exterior applications.
- The 67000F is suitable for applications with regular cleaning using harsh chemicals and cleaning solutions. It is impervious to moisture, acids, petroleum products, animal fats, rodents, insects and salt solutions.
- Window options include sloped pharmaceutical frame or flush double pane construction.
- The core is available with honeycomb or foam insulation.
- All edges are protected by stainless steel capping channels, creating an attractive appearance and durable design.
- Gray full perimeter gasketing ensures a tight seal.
- Breakaway door panel for Egress applications is available on the 67000F.

# Specialty Casing Mounted Sliding Service Doors



## ***DuruSlide 77000K Kydex Sliding Door***

- The 77000K sleek door systems incorporate modular panel and is intended for interior applications only. The 77000K is perfect for large size openings and areas that have high positive or negative air pressure.
- The panel is fabricated using a 16 gauge internal welded steel tube framework allowing the panels to be manufactured to virtually any size.
- The standard core is resin impregnated Kraft honeycomb with optional urethane insulation available.
- The panel finish is impact resistant Kydex® that has a high gloss finish and meets UL 94V, 5v and FAR 25.853a for fire retardancy. Standard colors are white and cadet blue, 12 additional colors are available.
- Stainless steel edge capping channels, on four sides, are recessed into panels providing flush construction.
- Full perimeter non-marking gray PVC gaskets snaps into place behind the capping channel preventing dirt or debris from building up.

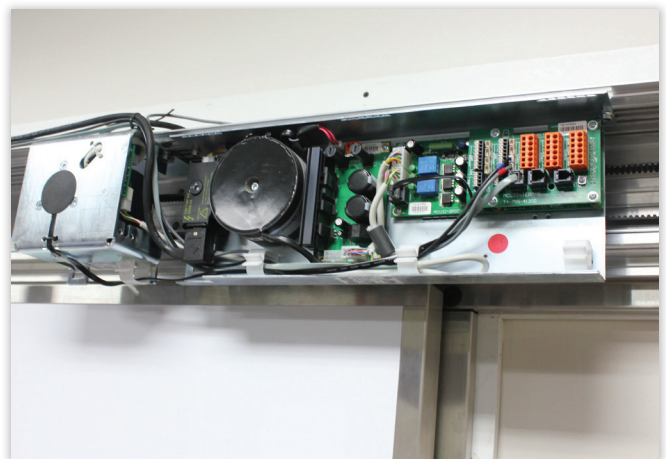


## ***DuruSlide 77000F Fiberglass Sliding Door***

- The 77000F sliding door system incorporates a modular panel with fiberglass construction. The fiberglass panel is highly durable with no seams, gaps or potential failure points ensuring beautiful aesthetics and a long panel life for both interior and exterior applications.
- The 77000F is suitable for applications with regular cleaning using harsh chemicals and cleaning solutions. It is impervious to moisture, acids, petroleum products, animal fats, rodents, insects and salt solutions.
- The door panel is available in either a molded fiberglass panel or with fiberglass face sheets. Either choice requires no painting or maintenance.
- The core is available with honeycomb or foam insulation.
- All edges are protected by stainless steel capping channels, creating an attractive appearance and durable design.
- Full perimeter non-marking gray PVC gaskets snaps into place behind the capping channel preventing dirt or debris from building up.

## ***Saino Operator TX-1***

With its modular design and quiet operation the TX-1 sliding door operator is the perfect choice for clean rooms, food processing and pharmaceutical applications. Movement of the door is controlled by a microprocessor controller, which requires no relays, wires or limit switches. Upon start up, the door will calibrate itself to the full open and close position and automatically set its travel. A separate activator is available for a partial open. Troubleshooting is easy with a self-diagnostic control panel. The system automatically performs tests to identify where a potential problem exists and displays a "fault code". Most problems can be resolved in minutes.





# Specialty Casing Mounted Sliding Service Doors

## *Saino Model 73000 Casing Mounted Stainless Steel Sliding Door*

Designed for installations requiring the highest sanitary standards, the Model 73000 sliding pharmaceutical door system incorporates fully flush panel design making the door system beautiful and easy to clean. Standard features on the 73000 include sloped stainless steel hood, no surface fasteners, double pane vision panels, integrated gaskets and casing mounted floor guides.

- The door is constructed with 18 gauge stainless steel face sheets bonded to resin impregnated Kraft honeycomb core and 16 gauge internal tubing. Optional urethane insulation available.
- The stainless steel face sheets wrap around the door, eliminating particulate “catch points” that make traditional doors difficult to sanitize.
- A closed end sloped stainless steel trackhood allows for easy cleaning and resists particle buildup.
- Multi-pane vision panels fit flush into the door panel eliminating sloped window frames and surface fasteners required on most window systems.
- Recessed stainless steel pull handles are flush on both sides of the door.
- Manual or power operation is available.



## Other Products from Chase Doors



Fib-R-Dor® Fiberglass Door Systems



Durulite® Industrial Traffic Doors



Durulite® CR-1400 Roto-Molded Doors



DuraSpan™ Industrial Curtains



World's Leading Manufacturer of Specialty Doors

Chase Industries, Inc.

Cincinnati • Redmond



Toll-Free: 800.543.4455 • 513.860.5565 • Fax: 800.245.7045

Web site: [www.chasedoors.com](http://www.chasedoors.com) • [www.coldstoragedoorsonline.com](http://www.coldstoragedoorsonline.com)

E-mail: [info@chasedoors.com](mailto:info@chasedoors.com)



Brochure #SB0615  
Printed in the U.S.A.

In our continuing effort to improve our products, some specifications or descriptions may change. We reserve the right to make such changes without notice or recourse.