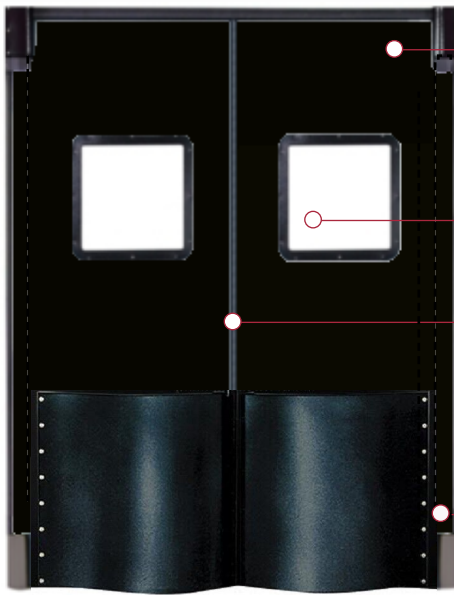


# Proline 300i

Chase Proline 300i doors feature a rigid extruded PVC internal framework permanently bonded to impact-resistant ABS face sheets. The door core utilizes foamed-in-place CFC-Free urethane. These extremely durable doors are ideal for use in supermarkets, retail establishments, restaurants, and food service operations. Benefits include visual separation, sound abatement, and thermal separation.



Proline 300i shown with optional teardrop bumpers

**Door Panel** - Lightweight, opens easily and closes every time. Overall panel thickness is 1-1/2", skin thickness is 1/8" and the door can be sized up to an 8' x 10' opening. Face sheets are impact and scratch resistant ABS plastic.

**Window** - Large polycarbonate windows are scratch resistant. Various standard and ADA window sizes are available.

**Gasketing** - Replaceable perimeter edge gasketing is used to seal the gap between panels in a pair of doors and between door and frame on single doors. The door comes standard with a 2" header seal and gaskets along the leading, back, and bottom edges. Partially gasketed doors are available.

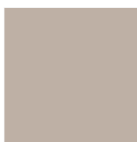
**Hinge Post** - A 1" diameter solid aluminum hinge post extends 6" into the black anodized aluminum back edge spine. The bottom of the hinge post rides in a bushing in the jamb guard, providing smooth operation and additional structural stability and strength.

## COLOR OPTIONS

Actual color samples should always be requested if color accuracy or matching is key to your decision.



Antique White



Beige



Black



Cadet Blue



Royal Blue



Navy



Cloud Gray



Forest Green



Fudge Brown



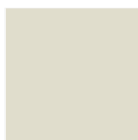
Gray



Metallic Gray



Red



Off White



White

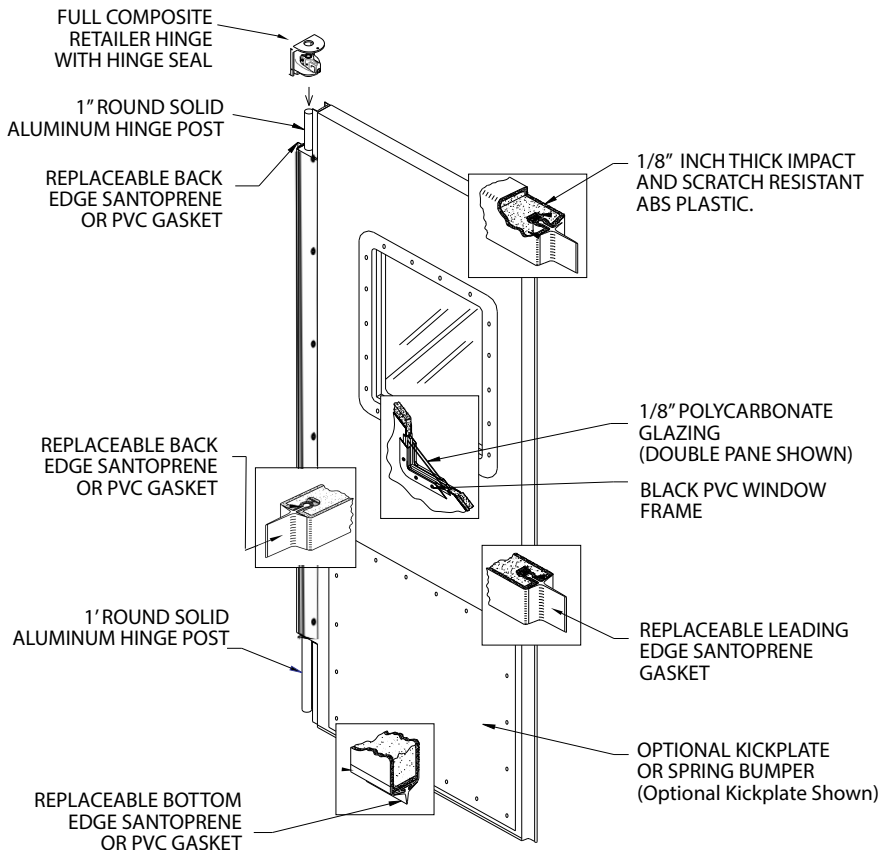


Chocolate Brown



Medium Brown

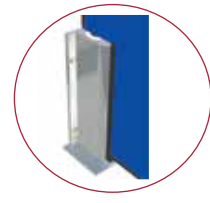
# Proline 300i



**Insulated Core** – High density, Non-CFC urethane core is foamed-in-place to insure a tenacious bond between the core and outer skin, providing sound abatement and excellent thermal separation with an R factor of 9.86.



**Upper Hinge** – Patented fully composite V-Cam roller assembly resists corrosion and rust and can travel up to 120° in each direction.



**Lower Hinge Guard** – The lower hinge guard protects the hinge post from impact damage and serves as the pivot point for the hinge post.

## APPLICATIONS

- Food Processing
- Institutional
- Retail
- Supermarket
- Food Service

## ENVIRONMENT

- USDA Accepted
- Personnel
- Interior

## OPTIONS

- Window Options
- Impact/Kick Plates
- Teardrop Bumpers
- Cart Guards
- Spring Bumpers™