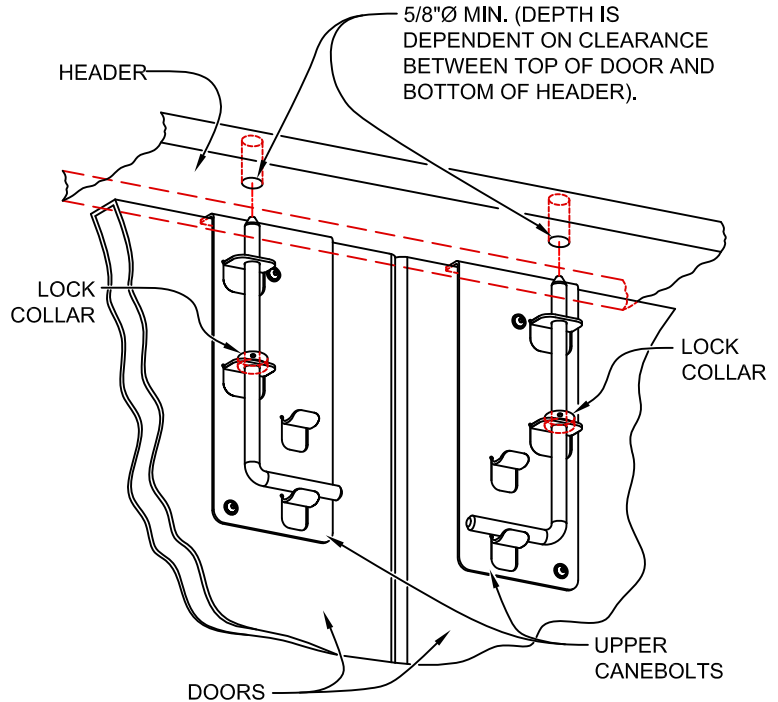




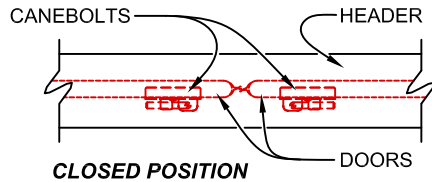
## UPPER CANEBOLT INSTALLATION STEPS

**NOTE: IF YOU ARE INSTALLING CANEBOLTS AFTER THE TOP SEAL HAS BEEN MOUNTED REFER TO "DETAIL A-1" BEFORE PROCEEDING.**

1. With the doors in the fully closed position (See FIGURE 1), raise canebolts until they contact the header. Mark the point of contact (a small dab of grease on the tip of the canebolt works well). Mark the actual point of drilling with a center punch.
2. Drill a 5/8"Ø (min) hole at each mark on the header. See FIGURE 2 for the proper depth of holes.
3. Close doors and raise canebolts to the locked position to check the depth of the holes. If necessary, drill holes deeper until canebolts lift and lock freely.
4. Place the lock collar over the canebolt between the two retaining tabs as shown in FIGURE 2. Allow the canebolt to rest in the lower saddle. Slide the lock collar to the top of the lower retaining tab as shown in FIGURE 2. Tighten lock collars securely. **"SEE IMPORTANT NOTE BELOW"**

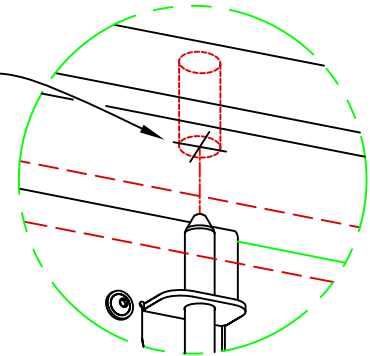


**FIGURE 2**



**FIGURE 1**

CUT THE TOP SEAL IN TWO DIRECTIONS PERPENDICULAR TO EACH OTHER. A TOP SEAL WITH A PLASTIC EXTRUSION MAY NEED DRILLED AT THIS AREA. BE SURE THAT THE CANEBOLT MOVES FREELY THROUGH THE CUT TO THE ANCHORING POINTS ABOVE.



**DETAIL "A-1"**

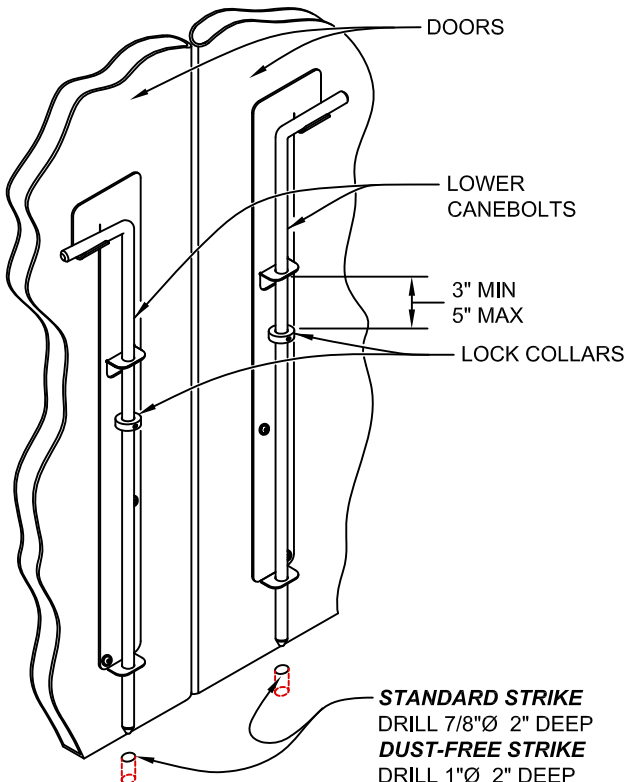
## LOWER CANEBOLT INSTALLATION STEPS

### STANDARD STRIKE

1. With the doors in the fully closed position, mark the floor where the canebolt makes contact when lowered.
2. Drill a 7/8" diameter (min) hole, 2" deep at the marked point.
3. Drive the aluminum sleeve into the 7/8" diameter hole.
4. Lift the canebolt above the lower retaining tab and place the lock collar over the canebolt between the two retaining tabs. Place the canebolt in the upper saddle as shown in FIGURE 3. Place the lock collar between 3 and 5 inches below the upper retaining tab and tighten securely.

### DUST-FREE STRIKE

1. With the doors in the fully closed position, mark the floor where the canebolt makes contact when lowered.
2. Drill a 1" diameter (min) hole, 2" deep at the marked point.
3. Clean all dust and debris from the 1" diameter hole drilled in step 2. Insert epoxy into the hole and tap the Dust-Free Strike into place.
4. Lift the canebolt above the lower retaining tab and place the lock collar over the canebolt between the two retaining tabs. Place the canebolt in the upper saddle as shown in FIGURE 3. Place the lock collar between 3 and 5 inches below the upper retaining tab and tighten securely.



**FIGURE 3**

**IMPORTANT**  
FAILURE TO TIGHTEN THE LOCK COLLARS SECURELY MAY  
RESULT IN PROPERTY DAMAGE AND/OR PERSONAL INJURY!