

FOUR-FOLD



FF30 / FF70

PERFORMANCE SERIES

INSTALLATION INSTRUCTIONS



DoorEngineering.com
800.959.1352



Table of Contents

<u>Important Notice</u>	<u>3</u>
<u>Before Door Installation:</u>	<u>3</u>
<u>Before Operator Installation:</u>	<u>3</u>
<u>Operator Install:</u>	<u>3</u>
<u>Safety Practices:</u>	<u>3</u>
<u>Loading and Installation Equipment</u>	<u>4</u>
<u>FF30 Parts Guide</u>	<u>5</u>
<u>Interior view</u>	<u>5</u>
<u>Required PPE</u>	<u>6</u>
<u>Installation Instructions</u>	<u>7-27</u>
<u>Step 1: Prep and setup</u>	<u>7</u>
<u>Step 2: Jamb installation</u>	<u>7-8</u>
<u>Step 3: Header installation</u>	<u>8</u>
<u>Step 4: Remove panels from shipping rack</u>	<u>9-10</u>
<u>Step 5: Lifting panels</u>	<u>10-13</u>
<u>Step 6: Shimming</u>	<u>13</u>
<u>Step 7: Track & Accessories</u>	<u>14</u>
<u>Step 8: Install Trollys</u>	<u>15</u>
<u>Step 9: Panel Adjustment</u>	<u>16</u>
<u>Step 10: Control Arms</u>	<u>17</u>
<u>Step 11: Operator</u>	<u>17</u>
<u>Step 12: Connecting Rods</u>	<u>18</u>
<u>Step 13: Weathering Installation</u>	<u>19-21</u>
<u>Step 14: Manual Operated Doors</u>	<u>22</u>
<u>Step 15: Installing Disconnects Kits</u>	<u>22-23</u>
<u>Step 16: Installing Safety Labels</u>	<u>23</u>
<u>Step 17: Electrical Components</u>	<u>24</u>
<u>Step 18: Additional Installation for FF70 Doors</u>	<u>25-26</u>
<u>Step 19: Applying Finishing Touches</u>	<u>27</u>
<u>Appendix: R3 Operator Layout</u>	<u>29-30</u>
<u>Appendix: R2 Operator Layout</u>	<u>31-32</u>
<u>WARNING</u>	<u>33</u>
<u>Limited Warranty</u>	<u>34-36</u>
<u>Notes</u>	<u>37-39</u>

WARNING

Before Door Installation:

- **READ AND FOLLOW ALL INSTALLATION INSTRUCTIONS.** Review with installation team.
- Verify required documents are correct (as built and E1, Operator Layout, etc.)
- Verify that installation equipment (Telehandler, Forklift, Crane, etc.) is rated to handle the weight of the door.
- Verify that the door is the correct size for the opening. Measure and inspect the openings width and dimensions (reference included as-built drawings).
- Ensure that work area is clear of dirt and debris.

Before Operator Installation:

- **ALL ELECTRICAL WIRING MUST BE DONE BY A CERTIFIED ELECTRICIAN.**
- Read the *CW Automation Door Controller Setup Manual* provided with the control panel.
- Refer to all applicable local electrical codes.
- Always refer to National Electric Code.
- Always disconnect Main Power before doing any electrical work.
- Verify that proper Over-Current and Short-Circuit prevention will be used.
- CW Automation Contact: (507)-665-4186

Operator Install:

- A door that is operating improperly could cause severe injury. Have qualified service personnel make repairs or adjustments to panels and other hardware before installing the Operator.
- Place and constrain door panels in the closed position **before** connecting Operator.
- Installation of door Operator must be done by a qualified installer.
- Install Door Operator at least 8 feet or more above the floor.
- Do not connect the Door Operator to the source of power until indicated in the instructions.
- Locate the Control Panel:
 - In sight of door system
 - At a minimum height of 5 feet from finished floor to bottom of Control Panel
 - Away from all moving parts of door system

Safety Practices:

- All labels are provided in the "Safety Label Kit".
- Install the "Entrapment Warning" label next to the Control Station in a prominent location.
- Before operating, always check clearance around the door for any person or object that may be in the door(s)'s path. Never store items in or near the area of door travel.
- If you have any questions about the safety of the door operating system. Contact Door Engineering & Manufacturing at **1-800-959-1352**.

Check The Shipment

It's very important before installing the doors to check for any shipping damages or missing items immediately upon arrival. Go through the shipping list and check off all the hardware parts specified in your order. The shipping list is located in the hardware crate with the installation instructions and as built drawings. If any equipment, doors, or hardware is missing or damage, call Door Engineering immediately at **1-800-959-1352**.

Loading and Installation Equipment

Forklift Installation Tool (Fig. 1)

- **DE Part # 1-85-020**
- Load Capacity 1,600 lbs.



Install slings (NOT INCLUDED) (Fig. 2)

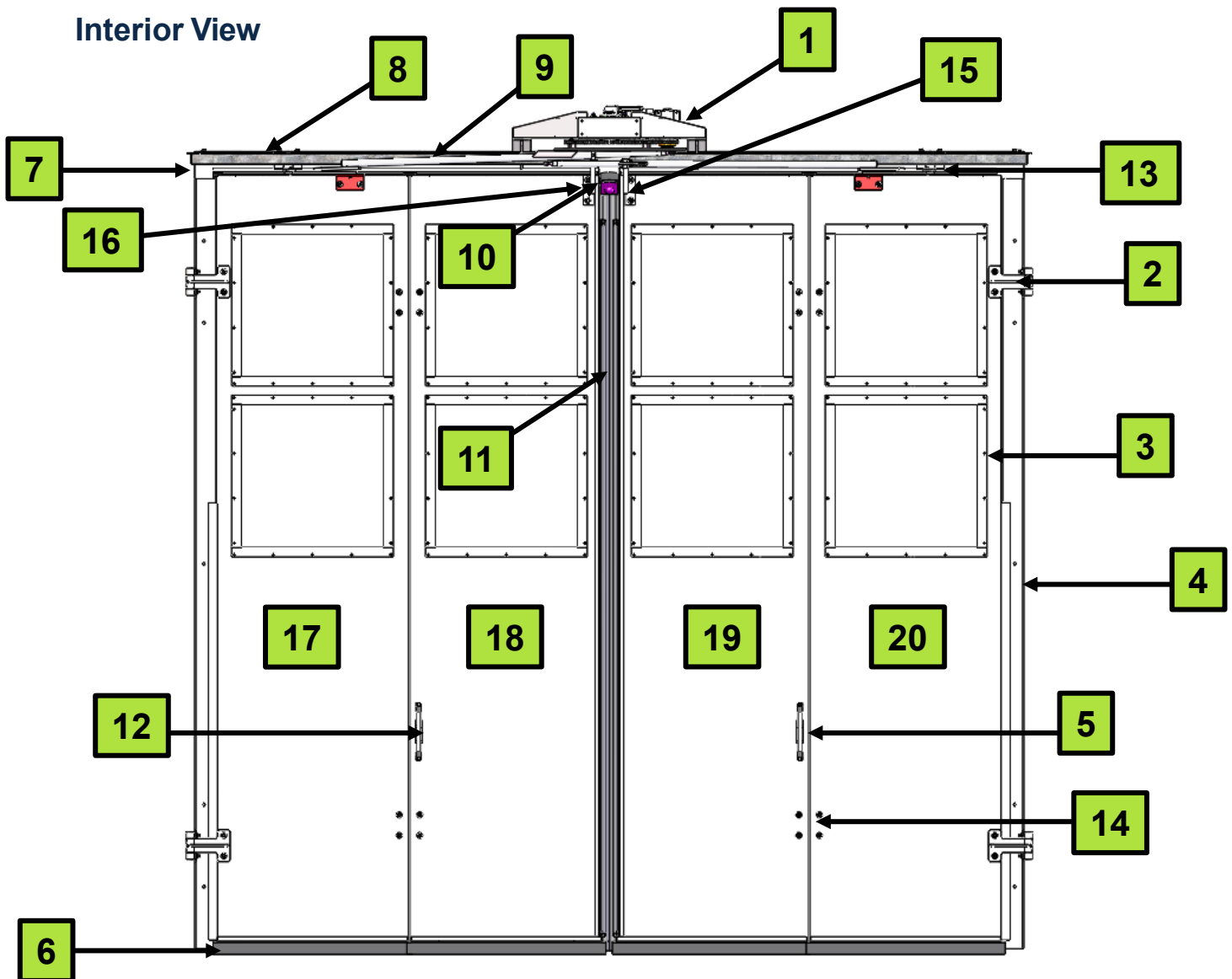
- Load Capacity 1,600 lbs. (basket load)
- Recommend one 10 ft. or two 8' twisted-eye web slings.



NOTE: DO NOT ATTEMPT TO LIFT LOADS THAT EXCEED INSTALLATION TOOL CAPACITY. FAILURE TO COMPLY MAY RESULT IN DAMAGE TO DOOR AND/OR FACILITY, BODILY HARM, OR DEATH.

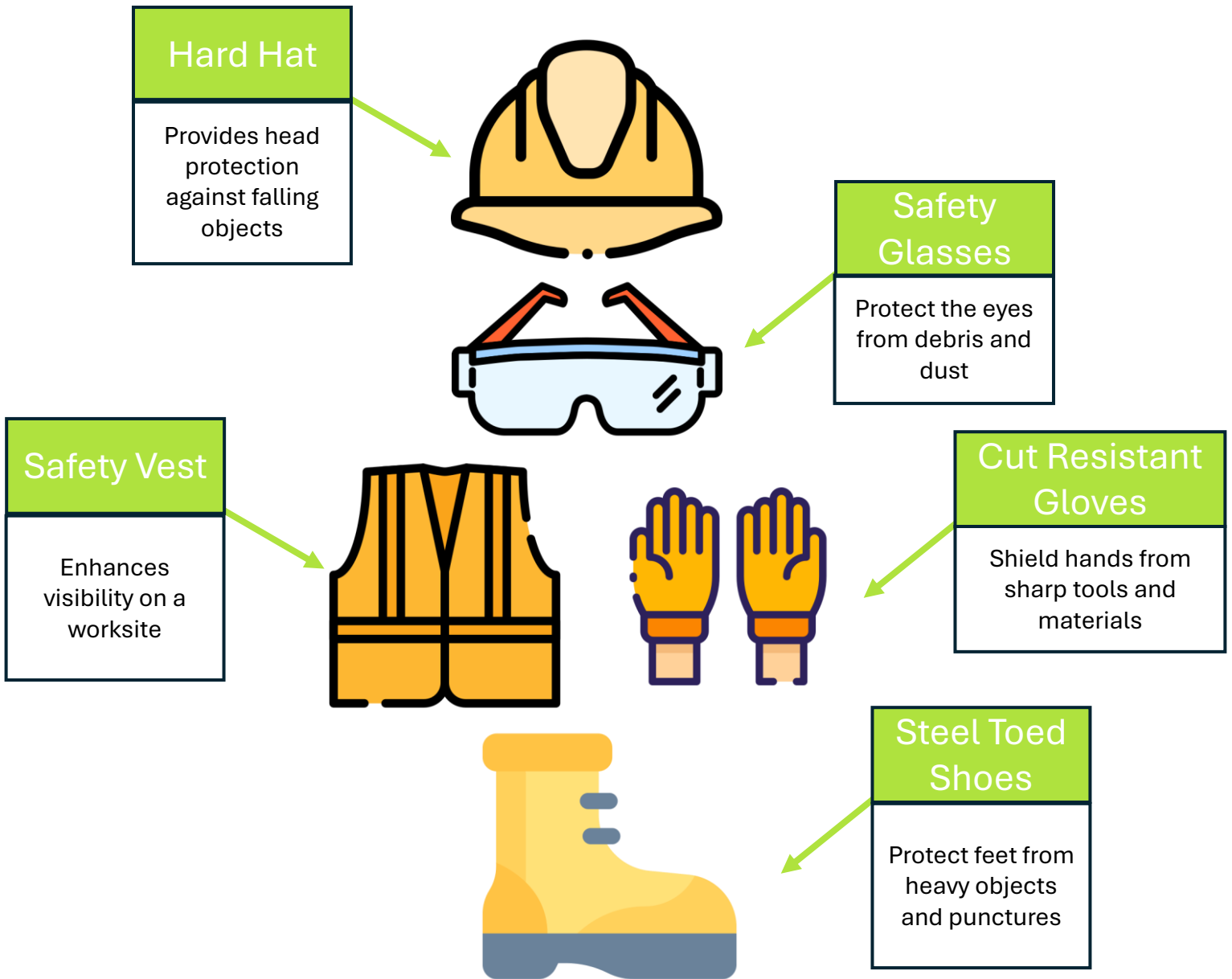
FF30 Parts Breakdown

Interior View



- | | |
|-------------------------|---------------------------------|
| 1. Operator R2/ R3 | 11. Safety Edge Assembly |
| 2. Jamb Hinge | 12. Door Engineering Serial Tag |
| 3. Window Frame | 13. Control Arm Assembly |
| 4. Jamb Angle | 14. Fold Hinge (Door Exterior) |
| 5. Pull Handle | 15. Trolley RH |
| 6. Sweep Assembly | 16. Trolley LH |
| 7. Header | 17. LH Jamb Panel |
| 8. Track | 18. LH Fold Panel |
| 9. Connecting Rod R2/R3 | 19. RH Fold Panel |
| 10. Presence Sensor | 20. RH Jamb Panel |

Required PPE



PPE requirements are determined by the individual jobsite and task being performed. The PPE shown represents the minimum basic PPE requirement for industrial door install.

Installation Instructions

1: Door Installation

1.1 Preparation The Four-fold door is assembled at the factory as complete as possible to minimize field installation time. The panels have the following items factory installed.

- Hinges
- Safety edges
- Center Bulb Seal
- Glass

Holes are pre-drilled for hardware to be field installed. For easier movement during installation, it is recommended that the panels remain banded together.

Recommended Installation Equipment:

- Lull / Forklift / Boom-Lift / Scissor-Lift
- Ratchet Strap
- Blocking / Dunnage
- Lifting Slings (*assorted lengths*)
- Clevis(s)/ Shackles
- Hammer Drill
- Level / Laser Level
- Poly or Steel Shims
- Towels / Rubber Pad (*to protect finish paint*)



1.2 Inspect Opening

- Verify rough opening
 - Width, height, plumb, level (floor/ header), mounting surface, material condition.

2: Jamb Installation

2.1 Measure

- Mark center of the opening on the floor. Measure over half the ordered width plus 1", make a mark. Measure full ordered width plus 2". Make a mark.
- See Example Below:

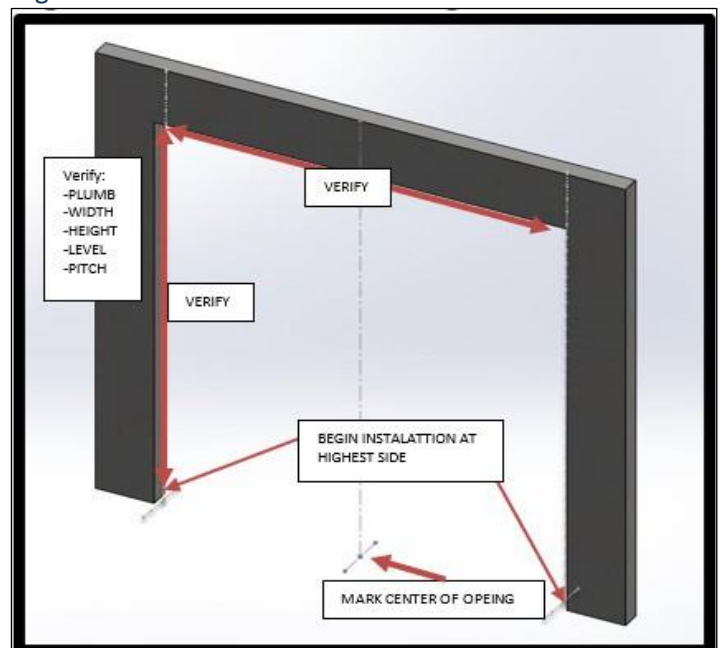
14'x14' Openings

- **Jamb Angle spacing is 14'2"**

12'x14' Openings

- **Jamb Angle spacing is 12'2"**

Figure 1.1



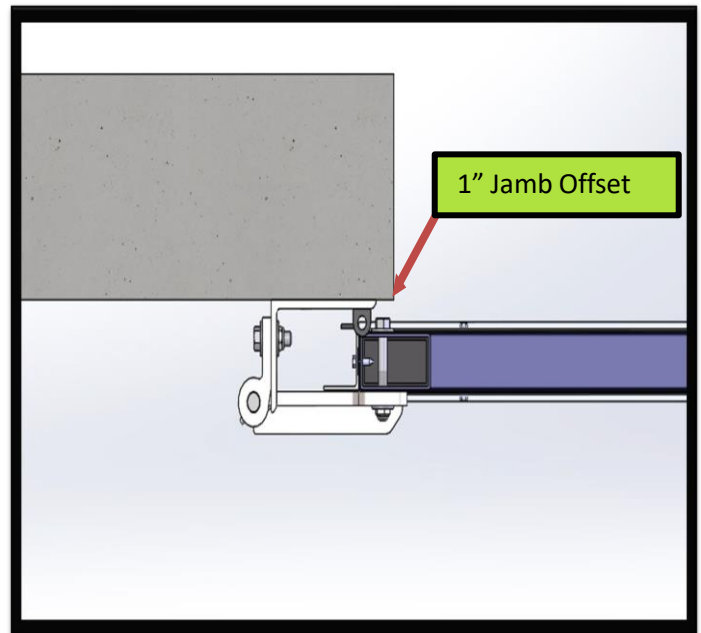
Installation Instructions

2.2 Install the jamb angles on door opening at marks on floor.

Note: If floor is out of level, start installation at higher side of opening, and shim opposing frame to match.

Ensure jamb angles are plumb in all directions. Refer to as built drawings.

- **Verify: Jamb angle should be inset 1" from the edge of the building structure. Overall dimension must be 2" wider than ordered width.**



Anchor Types:

- CMU / Precast: 1/2" x 5 1/2" Anchor
- Steel: 1/2" x 1 1/2" Thread Forming Fastener
- Wood: 1/2" x 6" Lag Bolt

3: Header installation

3.1 Install header centered in the opening. Both ends of the header should be aligned with the outsides of the jamb angles. Level header in **all** directions. Shim between wall and angle frame under anchors until level.

Note: Level header assembly is critical for proper clearances of drive linkage and control arms.

3.2 Ensure all anchors on headers and jambs are fully tightened.

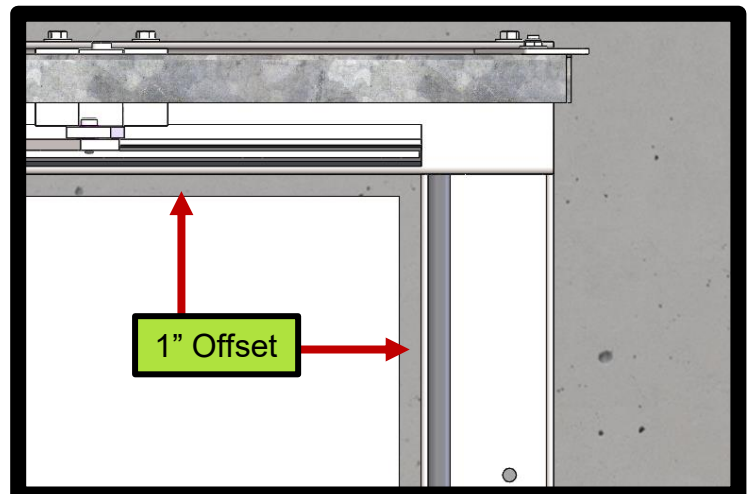


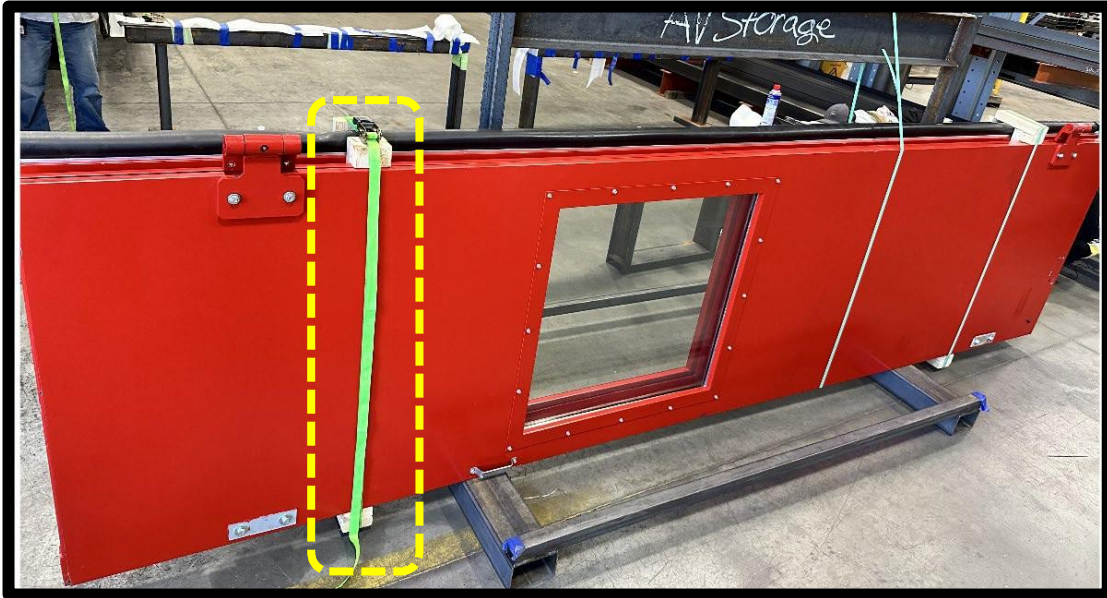
Figure 3.1



JAMBS AND HEADERS MUST BE LEVEL IN ALL DIRECTIONS. THIS IS CRITICAL FOR PROPER DOOR OPERATION.

Installation Instructions

Step 4: Remove panels from shipping rack.



4.1 Position Rack where it is accessible from both sides. **DO NOT** move rack once banding is cut. Damage to doors may occur.

4.2 Apply ratchet strap directly over the nylon banding at bottom of door to secure panels together for lifting. (**Do not rely only on nylon banding**)

4.2 Choke sling around the jamb panel **only** near its center point to achieve balanced load. Attach the other end to the forklift install tool for lifting.

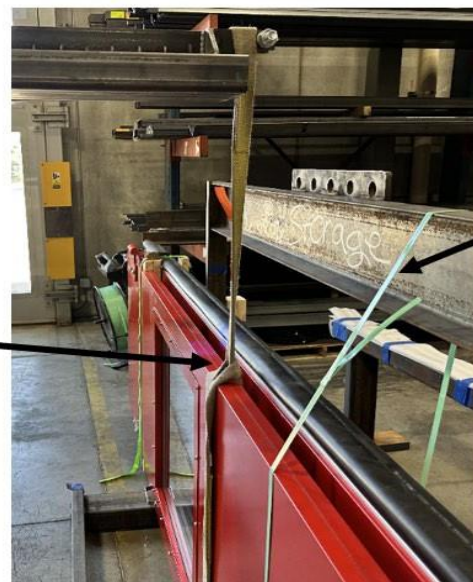


LIFTING FROM FOLD PANEL MAY CAUSE DAMAGE TO SAFETY EDGE.



ONLY CUT BANDS ONCE YOU HAVE LIFTING STRAP IN PLACE.

Choke panel



Cut this band after securing load.

Installation Instructions

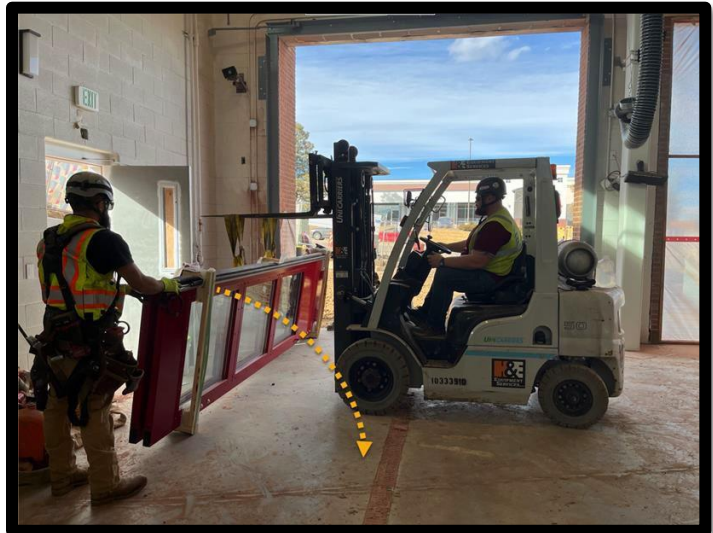
4.3 Once tension is applied to lifting slings cut panel specific nylon band that secures panels to the shipping rack.

4.4 Position bottom of panels facing the opening and lay panels down onto wood framing.

Note: Do not remove wood framing and banding from folded panels at this point.



**CAREFUL WITH GLASS.
DO NOT REMOVE
BANDING THAT HOLDS
DOORS TO RACK UNTILL
RACK IS IN PLACE!**



Step 5: Lifting Panels

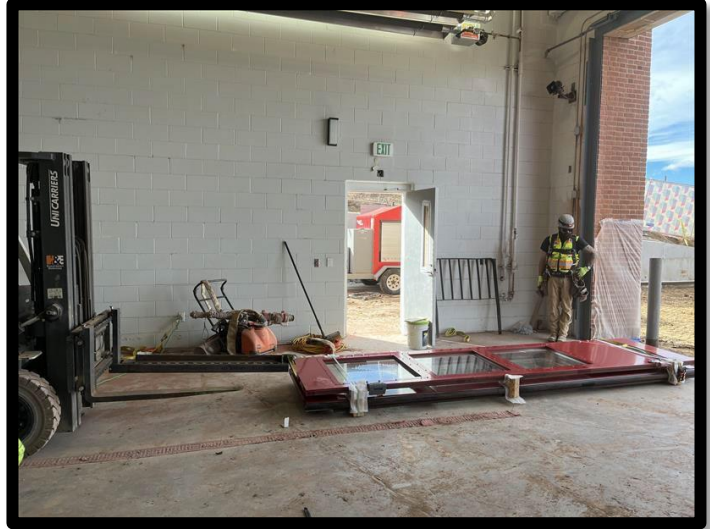
5.1 Utilizing a 10' (or 2 8') sling(s), run sling through the center of the door panels and around both hinges. Route sling up and over the Jamb hinge and back between the panels as shown below.



DO NOT REMOVE BANDINGS THAT HOLD DOOR SECTIONS TOGETHER!

Installation Instructions

5.2 Attach slings to forklift install tool.
Note: Clevis or shackle may be necessary.



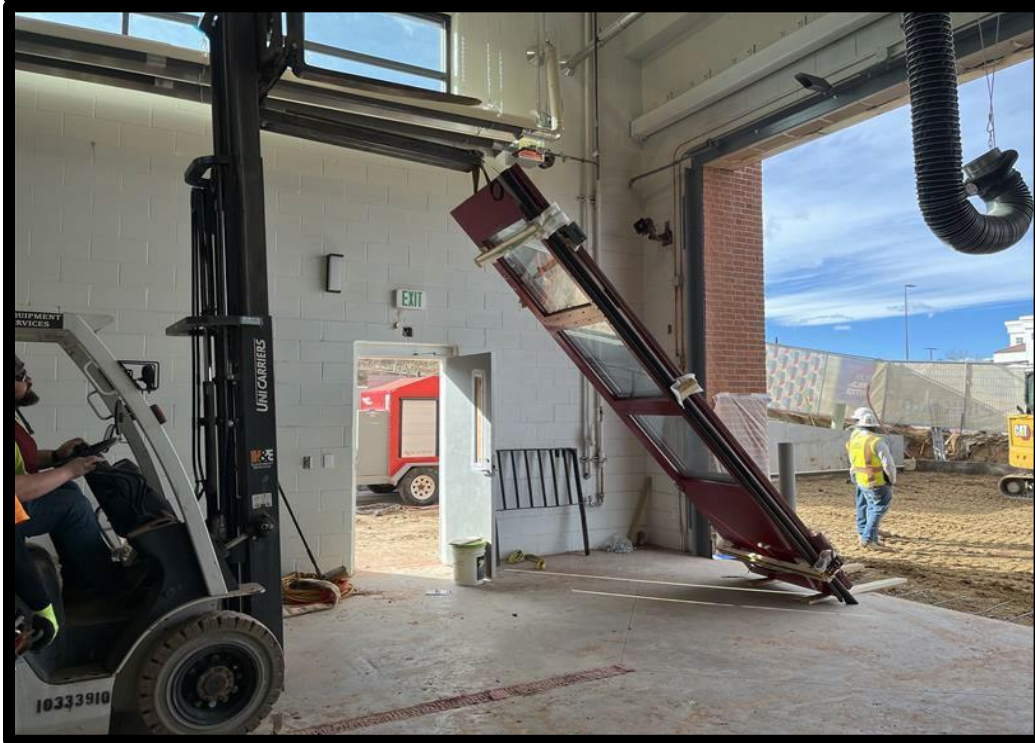
5.3 Block bottom of door using two pieces of wood to protect the panel and safety edge from contacting the ground during lift.



**FALIURE TO DO SO WILL
RESULT IN DAMAGE SAFETY
EDGE AND/OR DAMAGED
PAINT.**

Installation Instructions

5.4 Lift panel into position near frame.



AFTER PANELS ARE STOOD UP UPPER BANDING MAY NEED TO BE REMOVED TO BETTER POSITION DOOR.

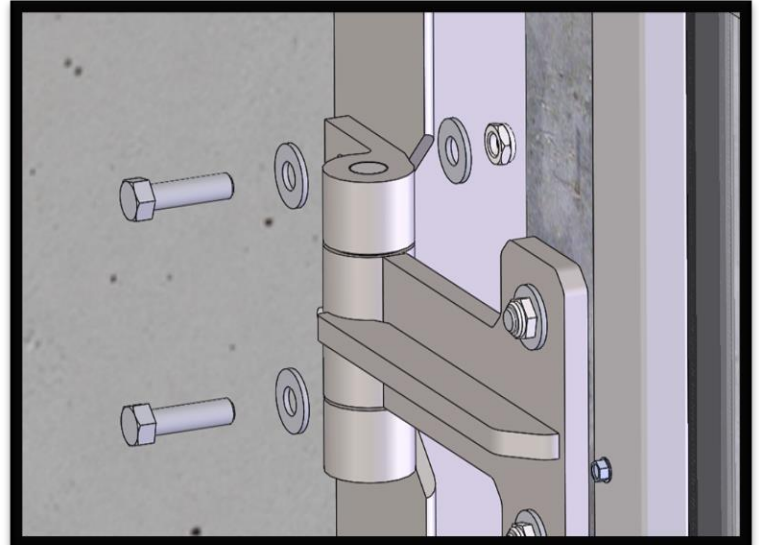
Installation Instructions

5.5 Secure the panel hinges to the jambs.



Bolting Pattern

- 1 3/4" Shoulder Bolt
- 1/2" Washer
- JAMB ANGLE
- 1/2" Washer
- Nylock Jamb Nut



5.5 Once door is secured to the frame, ratchet strap, banding, and wood framing can be removed.

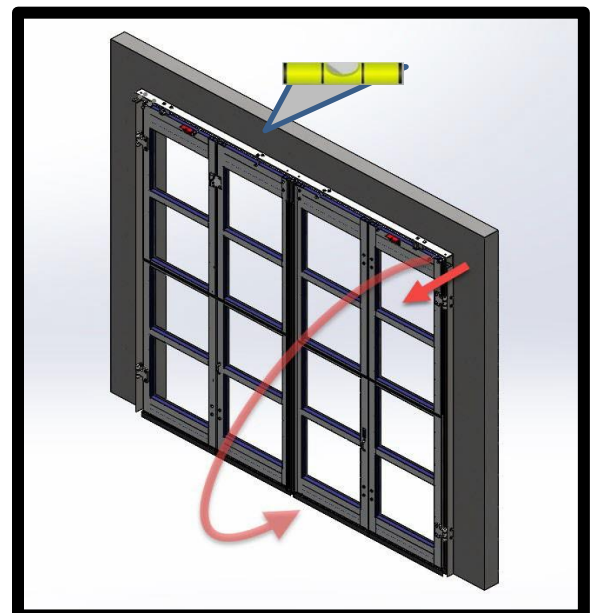
5.6 Repeat removal and lifting steps for other set of panels for the opening.

Step 6: Shimming

6.1 Shim between the jambs and wall as needed to manipulate the leading edge of both panels, so that they are plumb and in alignment with one another in the center.

Note: Shimming may need to take place after track and trolley are installed.

- Adding shims at the top right **(RH)** corner will push the bottom of the **(RH)** lead panel towards the exterior.
- Adding shims at the bottom **(RH)** corner will pull the bottom of the **(RH)** lead panel towards the interior.



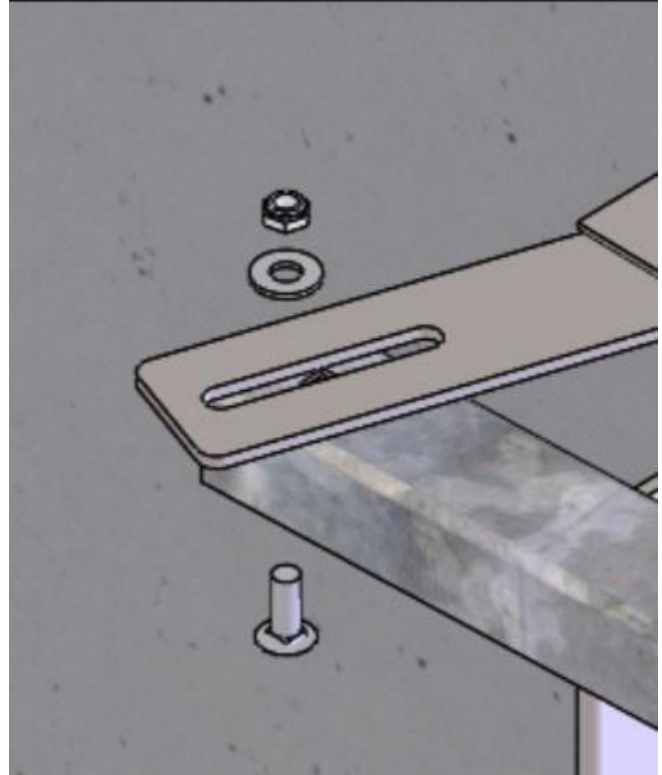
Installation Instructions

Step 7: Track & Accessories

7.1 Outside Track Hanger

- Install hardware as shown below.

Note: Hardware should be snug but allow for track adjustment.



Bolting Pattern

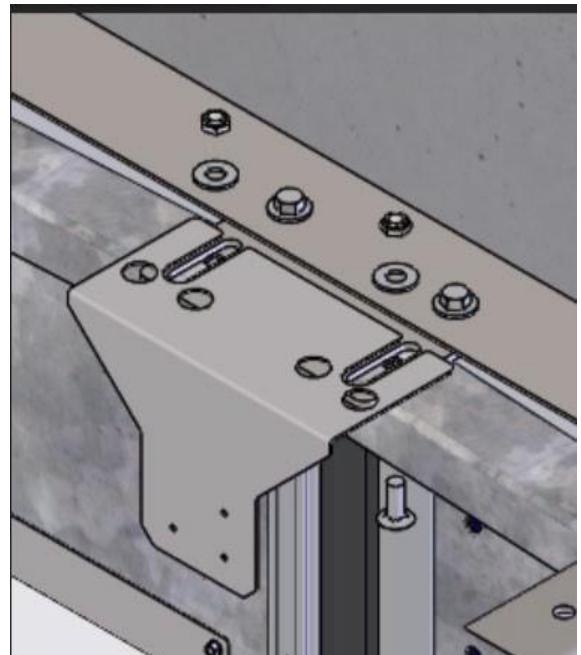
- 2" Carriage Bolt
- Track
- Track Support Bracket
- 1/2" Flat Washer
- Nylock Jamb Nut

7.2 Install presence sensor bracket and track at the same time.



Bolting Pattern

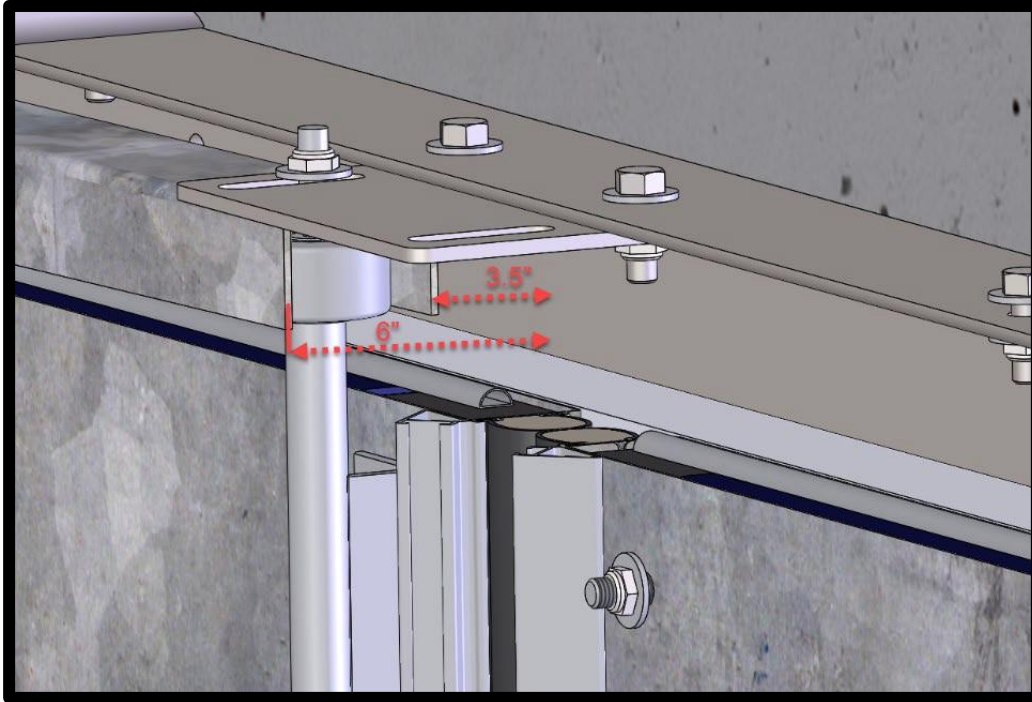
- 2" Carriage Bolt
- Track
- Track Support Bracket
- Presence Sensor Bracket
- 1/2" Flat Washer
- Nylock Jamb Nut



Installation Instructions

7.3 Position track as shown in detail below.

Note: Measurements are taken from edge of track to face of header.



IF APPLICABLE: Install Track Reinforcement (STEP 18.3) after step 7.1

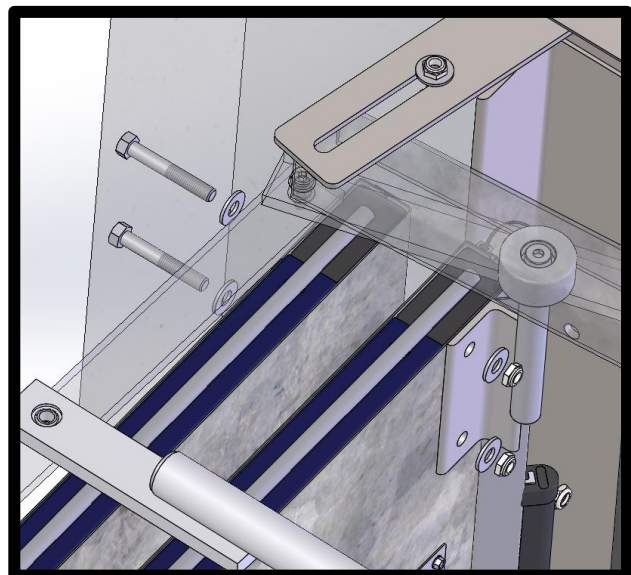
Step 8: Install Trolleys

8.1 Install trolleys ensuring bolt heads are on exterior of door panel.



Bolting Pattern

- 3 1/4" Shoulder Bolt
- 1/2" Washer
- Door Pannel
- Trolley
- 1/2" Washer
- Nylock Jamb Nut

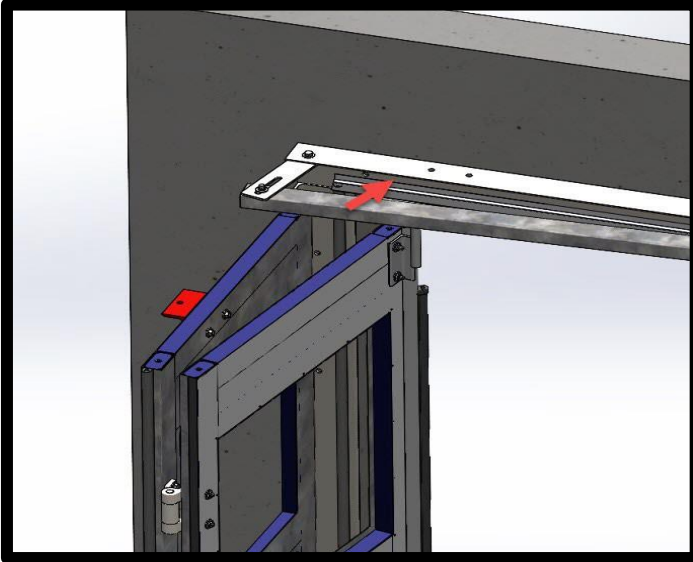
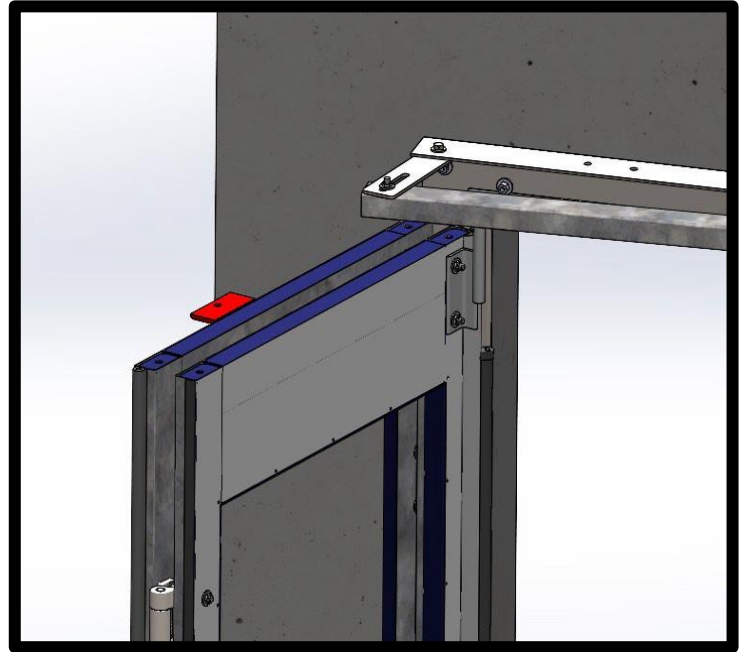


Installation Instructions

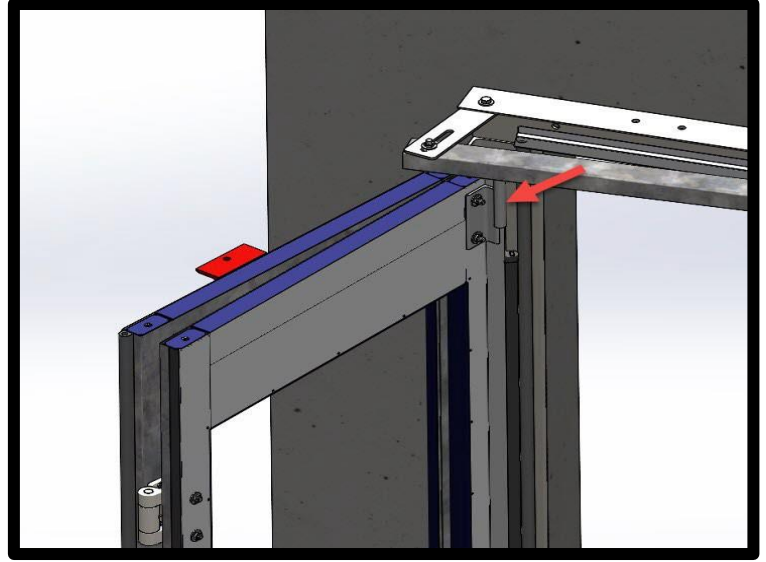
Step 9: Panel Adjustment

9.1 Outside Track Adjustment

- Place jamb panel at 90 degrees
 - Adjust outside track (in/out) until fold panel is parallel with jamb panel.
 - Tighten hardware to set track position.
 - Return door to closed position and verify panel alignment.
 - Tighten the center track hanger bolts
- **Note: Final adjustments to be made after operator has power.**



If panels form a “V” from the fold hinge, move the end of the track toward the building.



If the panels form an “A” from the fold hinge, move the end of the track away from the building.

Installation Instructions

Step 10: Control Arms

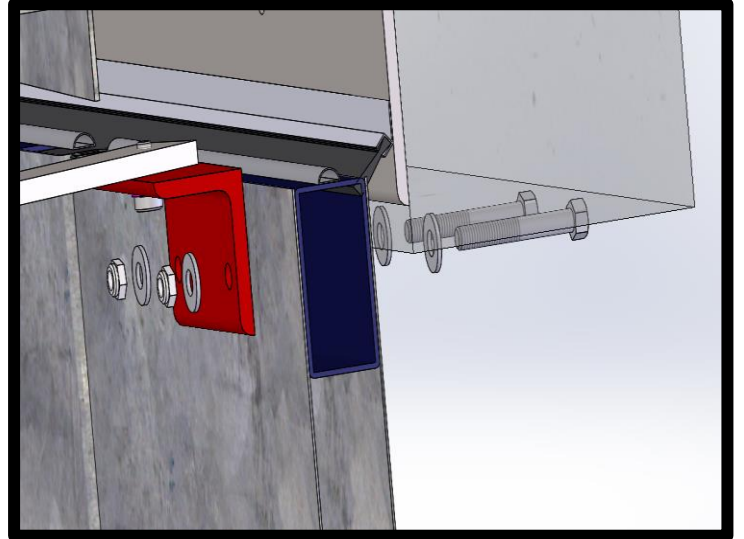
10.1 Bolt Control Arm Angle to Door Panel.

- Install bolts with bolt heads on exterior of panels.



Bolting Pattern

- 3 ¼" Shoulder Bolt
- ½" Washer
- Door Panel
- Control Arm
- ½" Washer
- Nylock Jamb Nut



DO NOT OVERTIGHTEN FASTNERS.

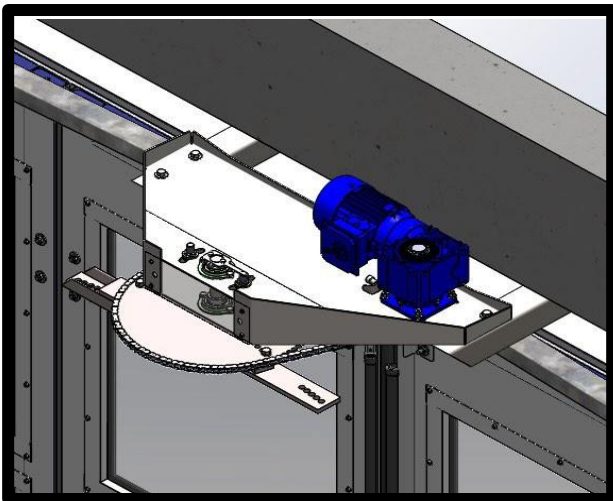
****FOR MANUAL OPERATED DOORS, SKIP TO STEP 14****

Step 11: Operator

NOTE: Operator & connecting rods are specific to width of door.

- 12' = R2 Operator
- 14' = R3 Operator

11.1 Verify that operator supports are level. Refer to section 3.1 to ensure header is level.



11.2 Secure operator in place using Hardware kit 1-HK108.



OPERATOR TO MOUNTS

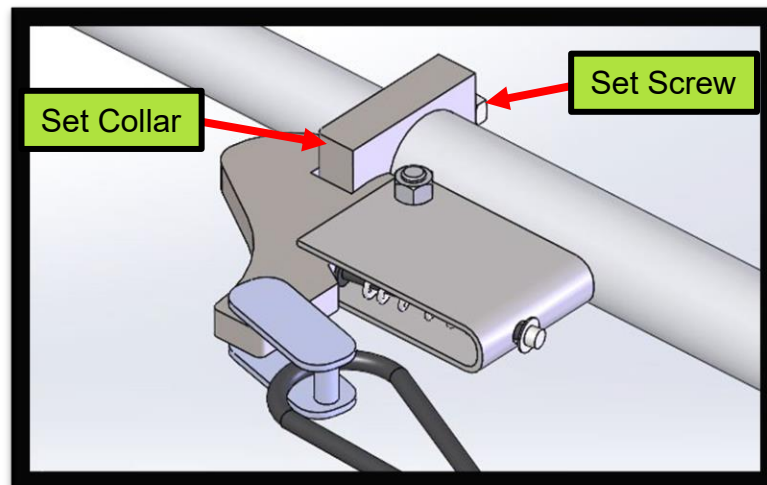
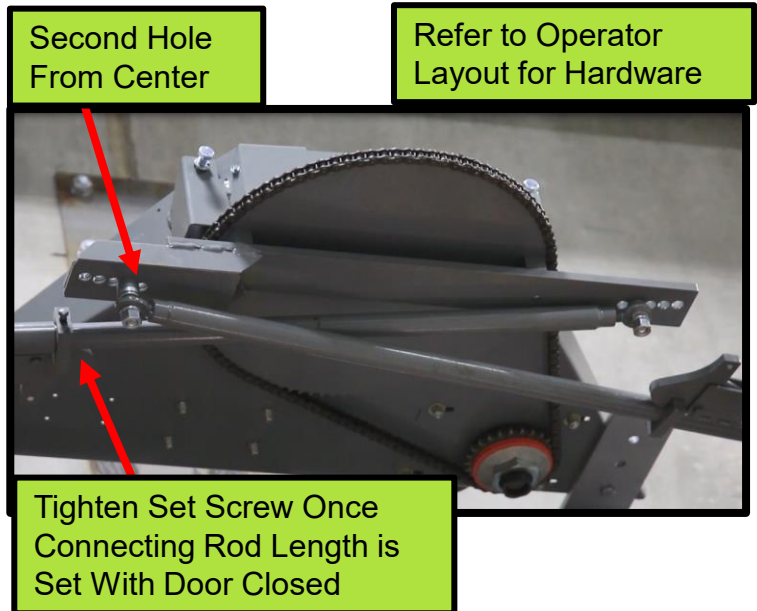
- ½" Shoulder Bolt
- OPERATOR ASSEMBLY
- OPERATOR SUPPORT
- ½" Lock Washer
- ½" Nut

Installation Instructions

Step 12: Connecting Rods

12.1

- Manually close door panels.
- Loosen set collar and verify release latch operates freely.
- Mount connecting rods as showing in corresponding operator detail using bolts located in the operator hardware kit **1-HK108**
 - **R3** (pg.24) **R2** (pg.26)
- Attach connecting rod to the **second hole** from center on the operator drive arm.
- Attach other end to the top side of the control arm as shown in operator layout.
- Secure set collar by tightening the 3/8" square set screw – **do not overtighten.**
 - Note: Close position is adjusted by moving set block.



IF SIDE ROOM IS LIMITED, THE INNERMOST HOLE CAN BE USED TO REDUCE THE SWONG OF THE DOOR. 3RD HOLE MAY BE USED IF AMPLE SIDE ROOM IS AVAILABLE AND ADDITIONAL OPEN SWING IS DESIRED



DRIVE ARM AND PROX SWITCHES ARE SET FROM THE FACTORY. DO NOT ADJUST PROX SENSOR POSITIONS UNLESS INSTRUCTED BY DOOR ENGINEERING.



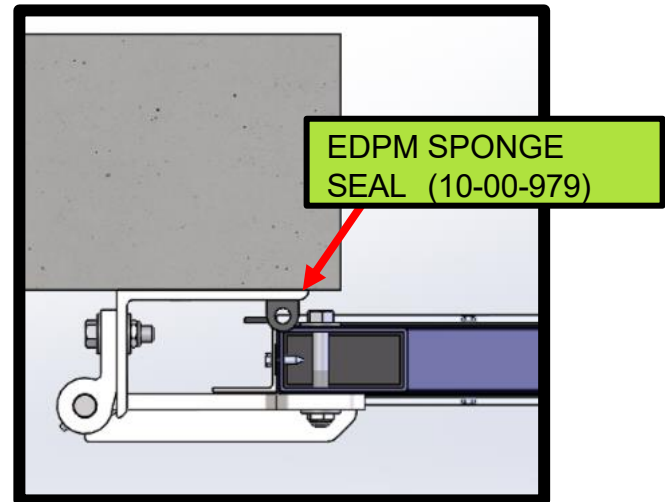
CONNECTING ROD ADJUSTMENTS MUST ONLY BE MADE WHEN THE DOORS ARE IN THE CLOSED POSITION.

Installation Instructions

Step 13: Weathering Installation

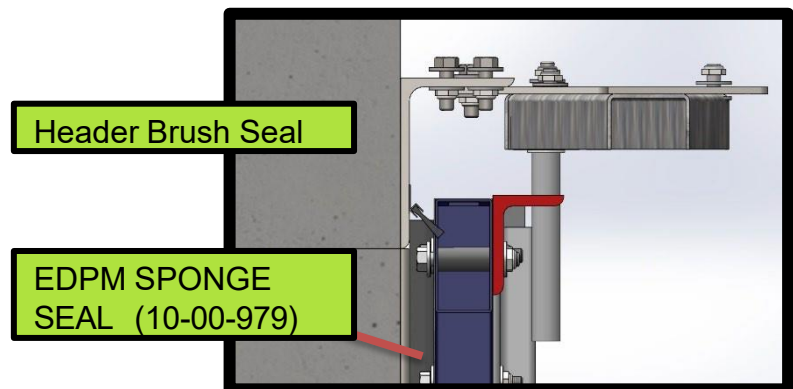
13.1 Install Jamb Seal

- Clean jamb angle where seal will be adhered.
- Holding edge of seal tight to the ground, install EPDM sponge seal just past the radius of the frame. (Approx. 1/8").
- Cut seal 1" past the top of the angle frame. (14'1")



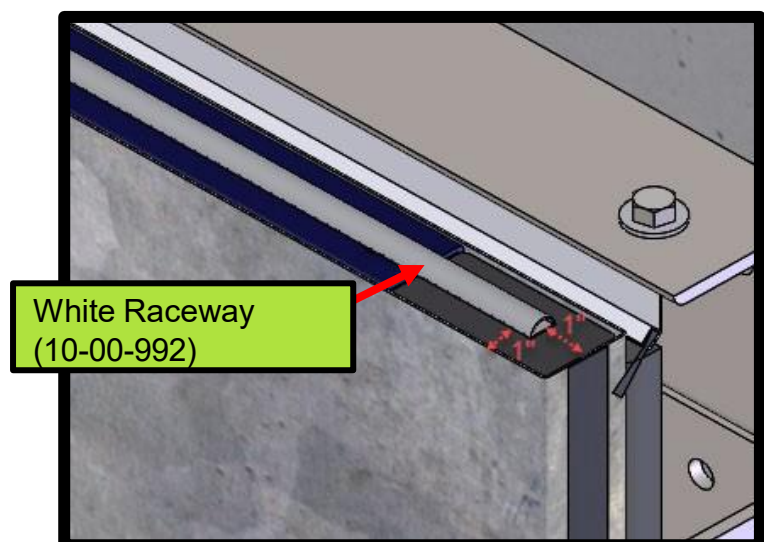
13.2 Install Header Seal

- Clean header angle where seal will be adhered.
- Install brush seal directly above top of jamb seals with brush angled down..
 - Min (4) pan headed tek screws recommended for secondary securement of seals.



13.3 Safety Edge Raceway

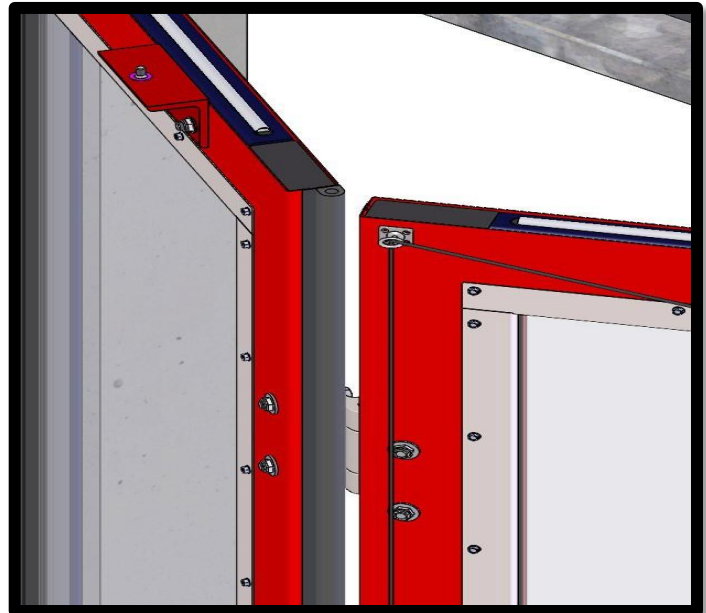
- Clean top of panels where raceway will be adhered.
- Mount the white raceway centered on the top of each door, approximately 1" from each edge. (Can be trimmed if desired)
 - Recommend Qty (2) tek screws for secondary securement.



Installation Instructions

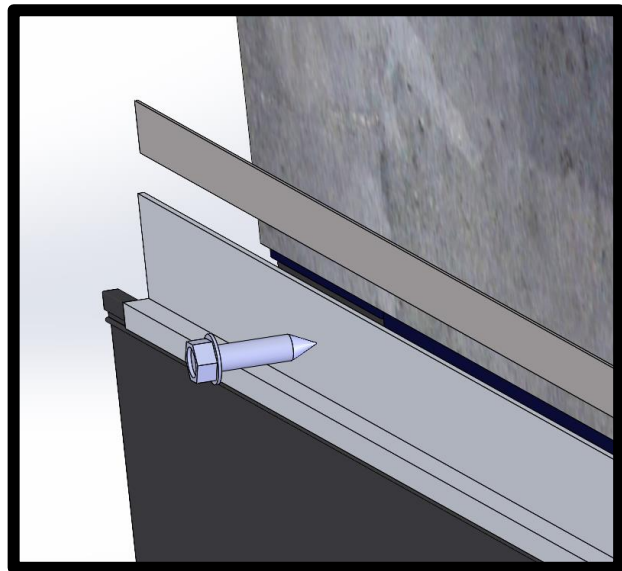
13.4 Jamb Panel Seals

- Remove clear film from seam tape on edges of panels.
- Clean edge of door panel where seal will be adhered.
- Starting from the top, install seal on the **jamb** panel **1/16"** from the **outside** face of the door.
- Leave seal 1" long at bottom of door to interface with bottom sweeps.
 - **EPDM Seal DE Part# 10-00-979**



13.5 Install Floor Sweeps (interior/ exterior)

- Close door
- Establish a straight line using a laser across the opening.
- Locate seals so that the rubber contacts floor $\frac{1}{4}$ "
- Install seal assemblies using double sided tape and (2) tek screws per retainer.
- Test door operation and trim edge of seals as necessary.
- Repeat for other side of the door.

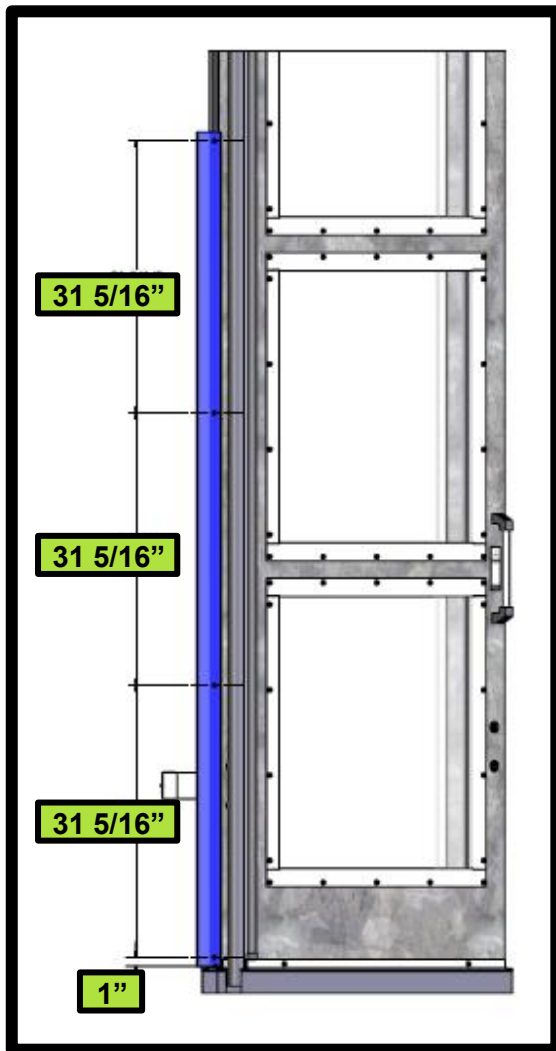


13.6 Center Bulb Seal

- Close door
- Trim center bulb so that the rubber is flush with floor in the closed position (just making contact)



Installation Instructions

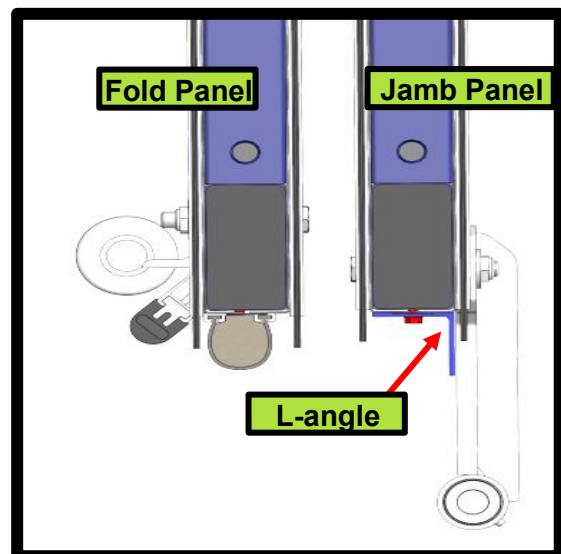


13.7 Prepping the Aluminum L Angle

- Clean the edge of the jamb panel where the L-angle will be installed to remove any dust, oil, or debris.
- Open the doors to gain access to the outside edge of the jamb panel.
- Measure and mark 1" on center from the bottom and side edges of the aluminum L-angle.
- From the initial mark, measure and add three additional marks spaced 31 5/16" on center vertically.
 - Note: These marks will be the screw locations to attach the L-angle to the jamb panel.

13.8 Installing Aluminum L Angle

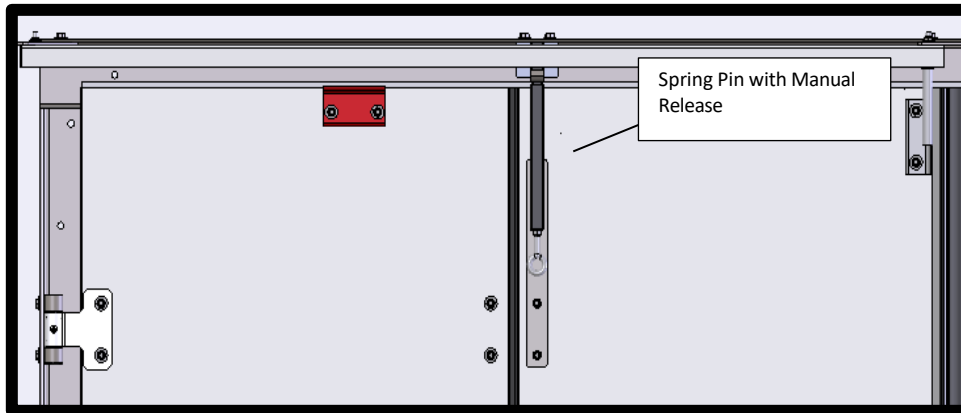
- Align the aluminum L-angle so it is centered over the edge of the jamb panel.
- Position the L-angle flush with the bottom edge of the tube frame. The L-angle should sit tight against the backside of the jamb hinges.
- Confirm vertical alignment using a level or straightedge.
- Install screws on marks previously made on the L-Angle perpendicular to the panel surface until snug. (Do Not Overtighten)



L-angle must be installed for UL325 hinge gap compliance.

Installation Instructions

Step 14: Manual Operated Doors



14.1 Spring Pin

- Pin and keeper come pre-attached from factory.
- Attach release cord.

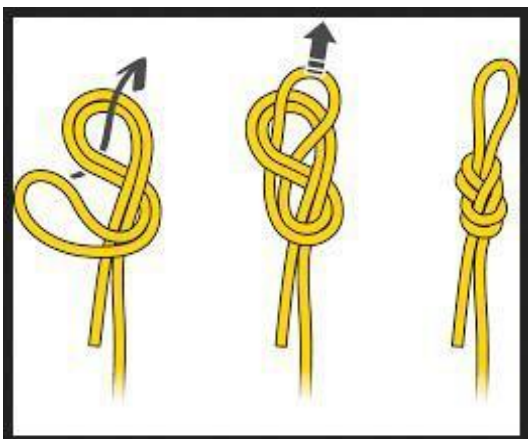
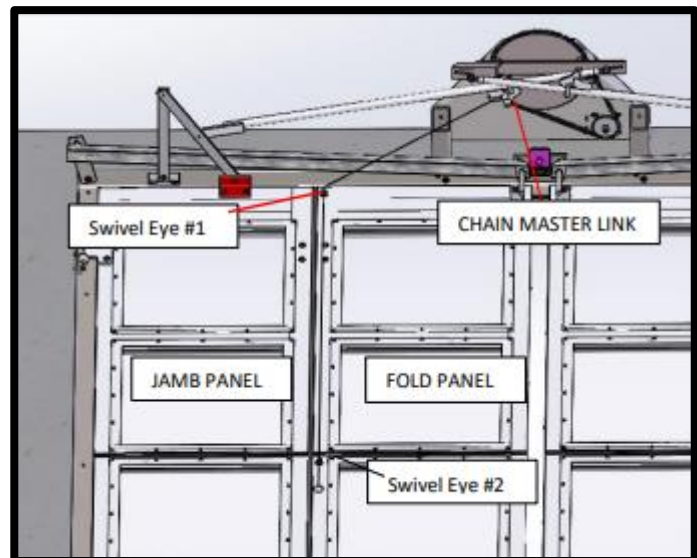
Step 15: Installing Disconnects Kits

15.1 Upper Swivel Eye

- With door closed fasten first Swivel Eye to the top corner of **fold panel**.
 - 1 ½" over
 - 1 ½" down
 - **Tip: predrill holes to avoid broken fasteners.**

15.2 Release Latch

- Thread cord up through first swivel eye.
- Form a figure 8 knot and secure to the disconnect release using the provided master link.



Installation Instructions

Step 17: Electrical Components

17.1 Operator

- Refer to Four-Fold Electrical Installations to aid with troubleshooting.



Equipment	Overview
<p style="text-align: center;">R3/R2 Operator</p>	<ul style="list-style-type: none"> • Direct Drive • R3 Operator FF30s with an opening width of 14' x 14' • R2 Operator FF30s with an opening width of 12' x 14'

17.2 Safety Devices

- Refer to Four-Fold Electrical Installation Instructions to aid with wiring in the door safety devices.

Equipment	Overview
<p style="text-align: center;">INTERIOR PRESENCE SENSOR</p>	<ul style="list-style-type: none"> • Infrared Presence Sensor <ul style="list-style-type: none"> • BEA IS40P
<p style="text-align: center;">SAFETY LIGHT CURTAIN</p>	<ul style="list-style-type: none"> • Light Curtain • CEDES Grid Scan/ Pro • Miller Edge
<p style="text-align: center;">MONITORED SAFETY EDGE</p>	<ul style="list-style-type: none"> • Safety Edge will stop a closing door upon activation and return door to “open” position. • ASO SENTIR KS4

Installation Instructions

18 Additional Installation for FF70 Doors

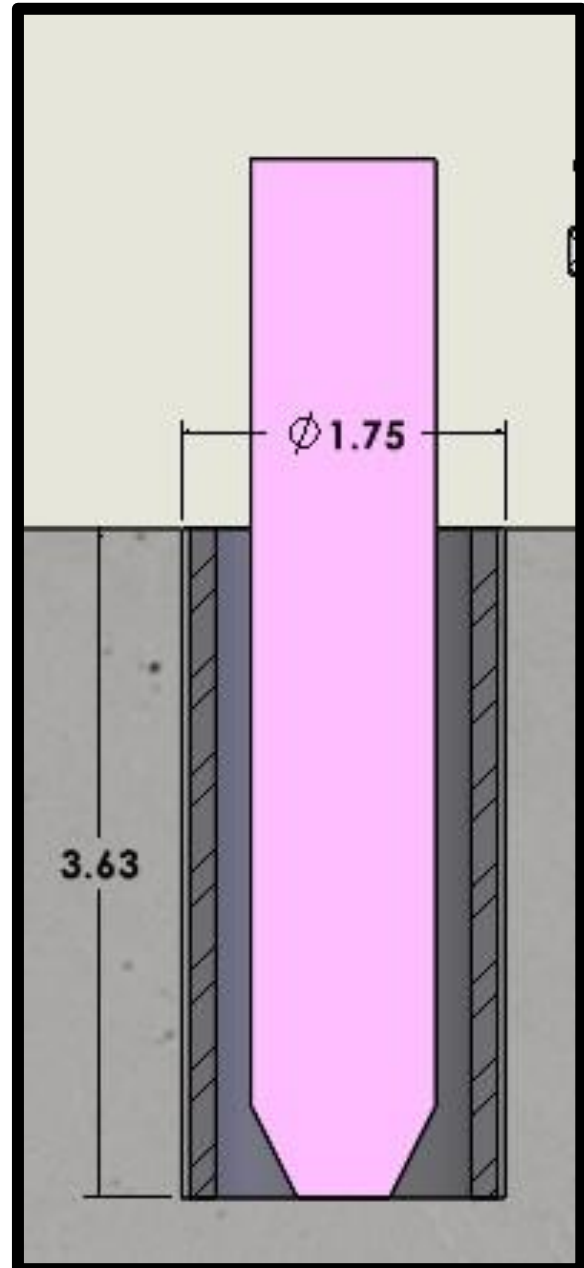
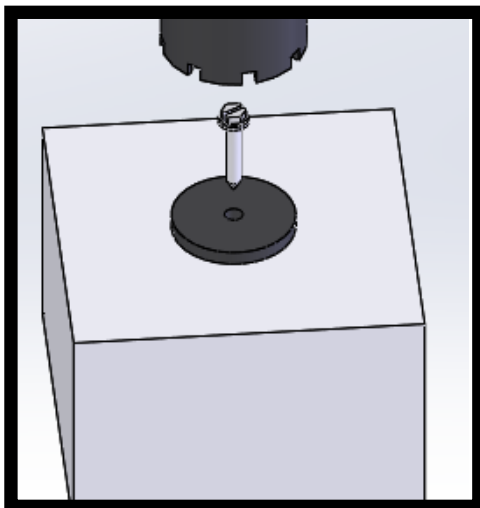
- There are additional installation steps required for the FF70 doors. The door style can be found on the first page of the as-built drawings, listed under the door quantity.

****IF YOU HAVE FF30 DOORS SKIP TO STEP 19****

18.1 Cremone Keeper Installation (FF70)

Cremone Keepers are to be installed after door has been fully installed and adjusted. Floor Cremone Keeper is field located and inserted in floor. Cremone Keeper installation starts with door in the closed position.

1. Extend Cremone to touch the floor. With chalk or marker, circle the Cremone's outside diameter to determine the center point for drilling.
2. Pre-drill hole for tapcon, secure centering washer in place with tapcon.
3. Drill floor with 1 3/4" diameter core bit, 3 5/8" deep, using the centering washer to hold bit in place.
4. Insert Cremone Sleeve into hole so that the top is flush with floor. Remainder of hole will be filled with epoxy (**Provided by Others**).
5. Ensure Cremone Sleeve and adhesive are flush with floor.

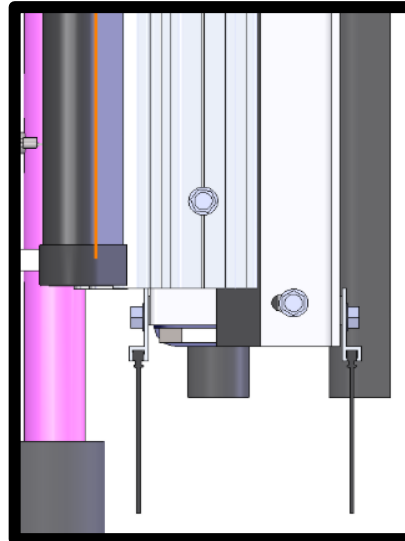
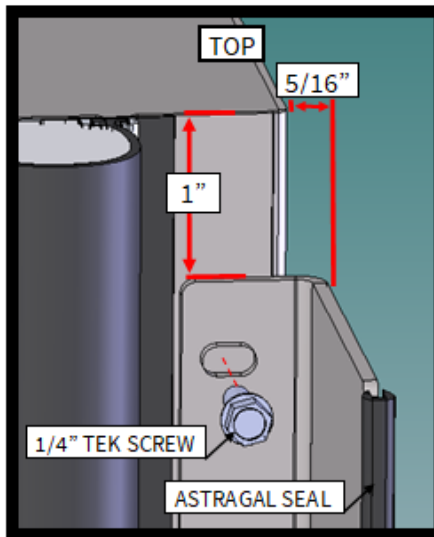
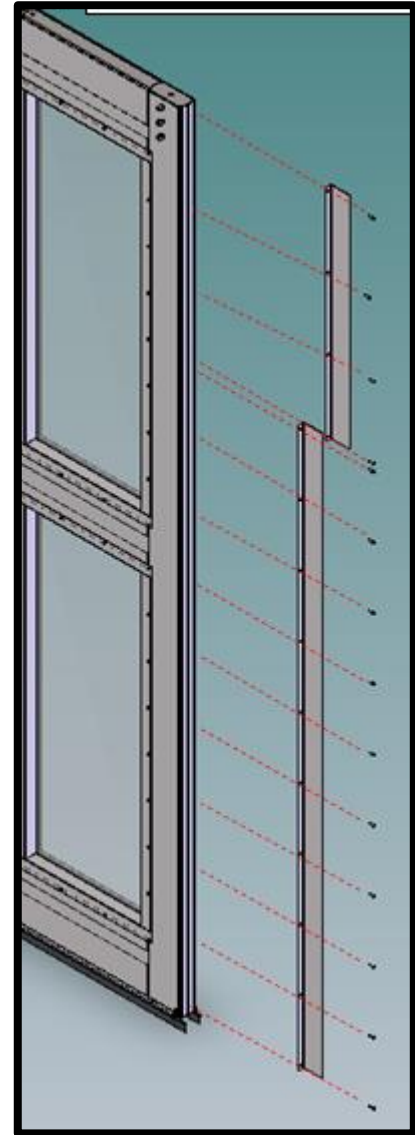


ENSURE CREMONE LOCKS ARE NOT IN THE LOCKED POSITION WHEN OPERATING DOOR. DAMAGE TO DOOR MAY OCCUR!!

Installation Instructions

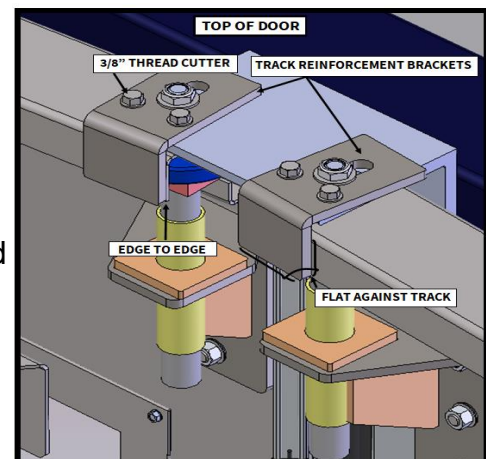
18.3 Hurricane Astragal (FF70)

- Astragal needs to be 1" from both top of door frame.
- Front face of Astragal is to be 5/16" from front face of door panel.
- Can be installed on either fold panel.
 - Manually open door halfway. Place, mark location and screw in lower half of Astragal. Tighten down 1/4" TEK Screws.
 - Mark location and screw in upper half of astragal. Tighten down 1/4" TEK Screws.
 - Adjust the door operator seal location
 - Press on the Astragal Seal.
 - Close doors manually and check for clearance between Astragal and door.



18.3 Track Reinforcement Instructions (FF70)

- Install reinforcement bracket on top of track mount when installing track.
- After final track adjustment is complete, butt the track bracket against the outside of track.
- Install 3/8" thread cutter to lock the bracket to the track and the track mount.



Installation Instructions

Step 19: Applying Finishing Touches

19.1 Hardware

- Check to make sure all hardware has been tightened on the FF30 Door System.

19.2 Door Appearance

- Clean the door surface thoroughly using a warm water and mild dish soap solution to remove all dirt and debris.



19.3 Applying Touch Up Paint

- Each FF30 Door System includes a complete paint touch-up kit containing the following:
 - **10-06-106 Spectracon Epoxy Prime Grey (QAP531)**
 - **10-06-107 Spectracron Epoxy Activator (QAP 532)**
 - **10-06-201 Mid-Gloss Clear Base (RAL Topcoat/ RAL and Color)**
 - **10-06-401 Urethane Hardner GXH 1080**
 - **Preval Spray Kit – Includes (1) jar of topcoat (1) bottle of hardener.**



19.4 Primer

- Mix Primer (10-06-106) and Activator (10-06-107) to 1:1 Ratio.
- Mask off the surrounding area and apply only to bare metal.

19.5 Topcoat

- Mix Base (10-06-201) and Hardener (10-06-401 to a 5:1 Ratio (topcoat:hardener)

Note: Pot life of mixed topcoat is 1-2 hours. Only mix enough for immediate use.

19.4 Preval Kit

- Paint must be thinned using thinner for proper application from the Preval sprayer.



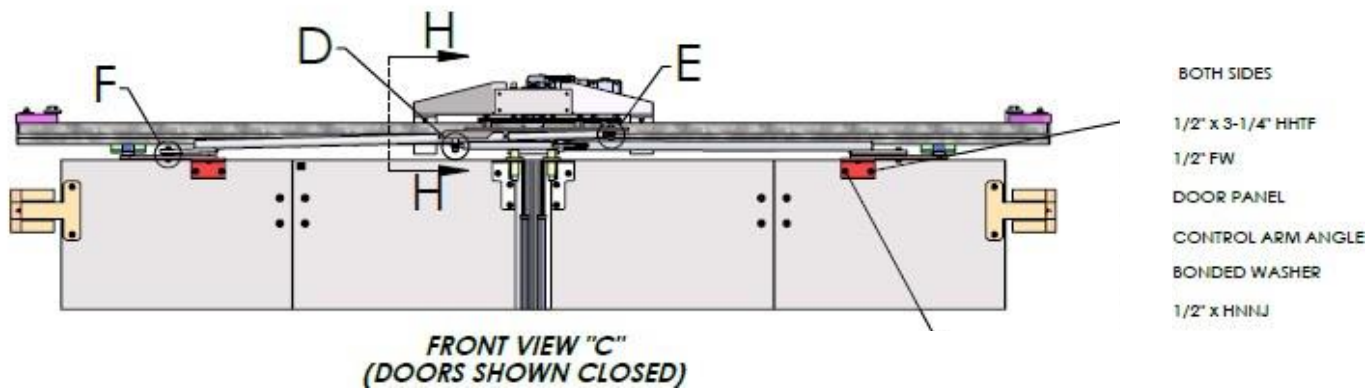
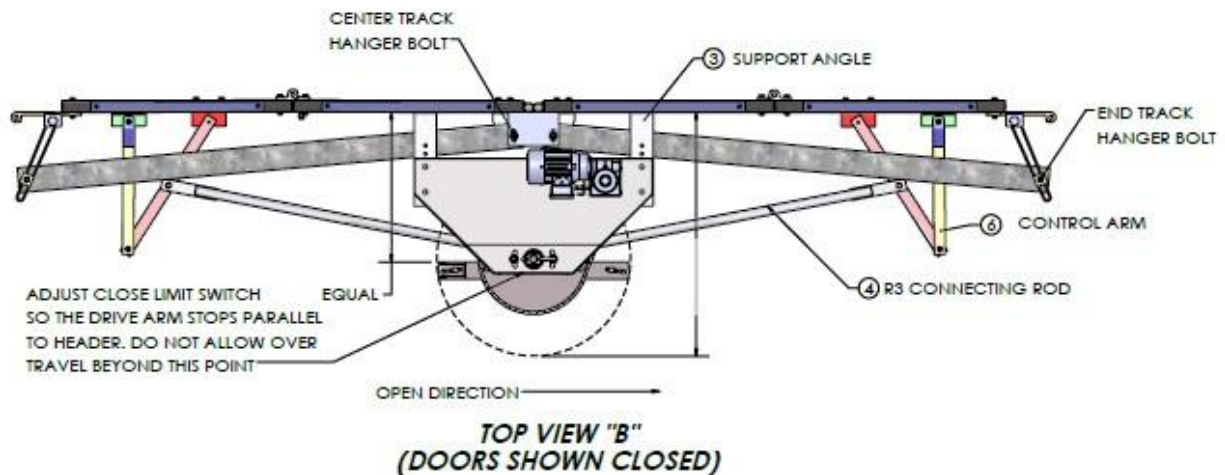
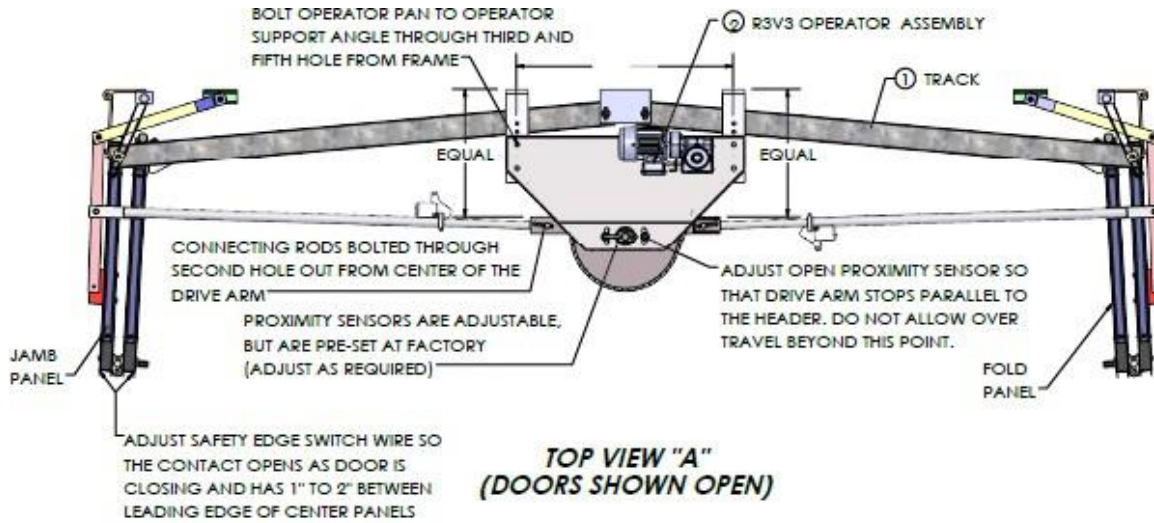
DO NOT OVER APPLY PAINT IN LARGE AREAS. ONLY APPLY PAINT TO SCRATCHES AND DINGS THEMSELVES. AVOID RUNS!

Installation Instructions

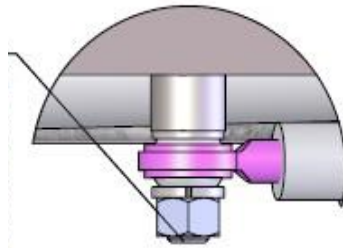


**This Page Intentionally
Left Blank**

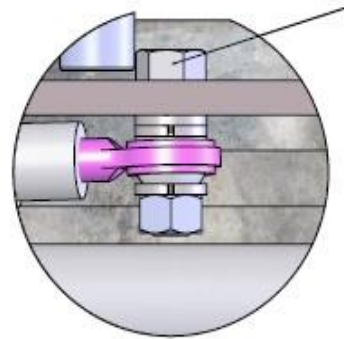
Appendix: R3 Operator Layout



5/8" x 3" LG HHCS
R3 DRIVE ARM
R3 STANDOFF (1-66-003)
LW 5/8"
CONNECTING ROD
LW 5/8"
HN 5/8"



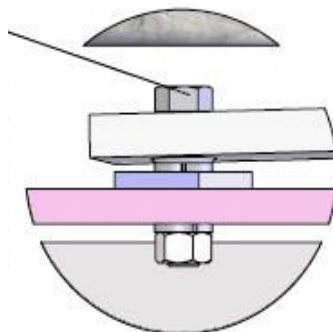
DETAIL D
SCALE 1 : 3



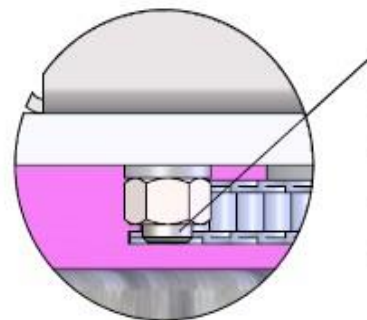
DETAIL E
SCALE 1 : 3

5/8" x 2-1/4" LG HHCS
R3 DRIVE ARM
5/8" LW
5/8" LW
CONNECTING ROD
LW 5/8"
HN 5/8"

1/2" x 2 1/4" LG HHCS
CONNECTING ROD
LW 1/2"
CONTROL ARM
LW 1/2"
HN 1/2"

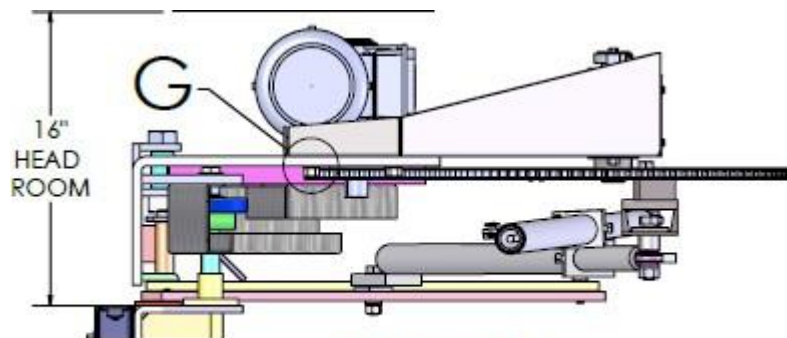


DETAIL F
SCALE 1 : 3



DETAIL G
SCALE 1 : 2

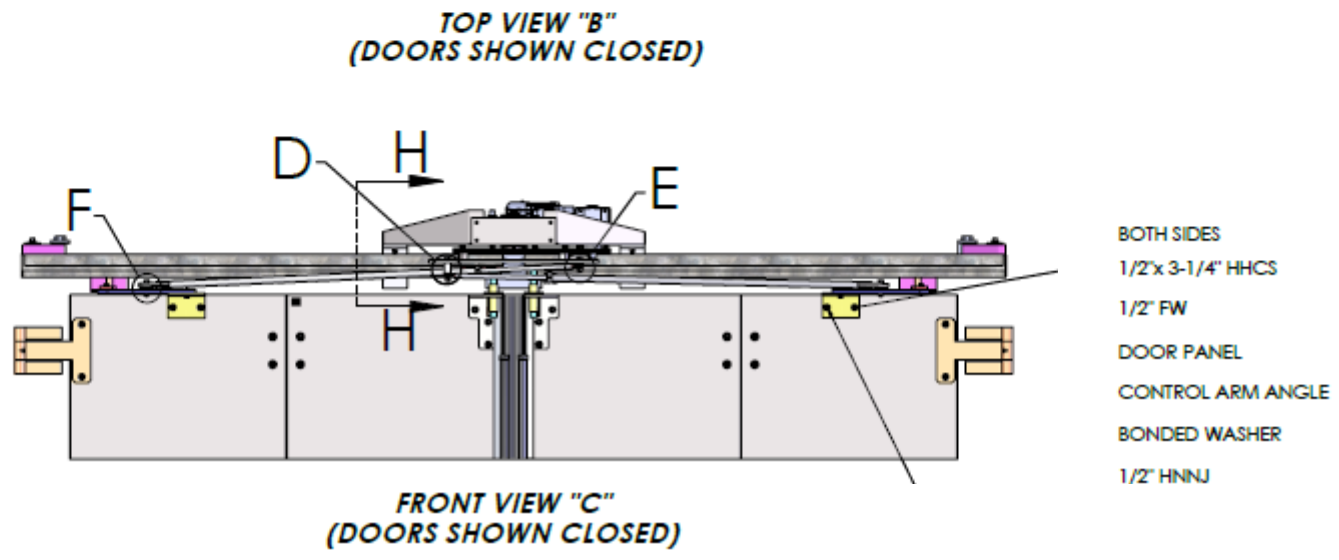
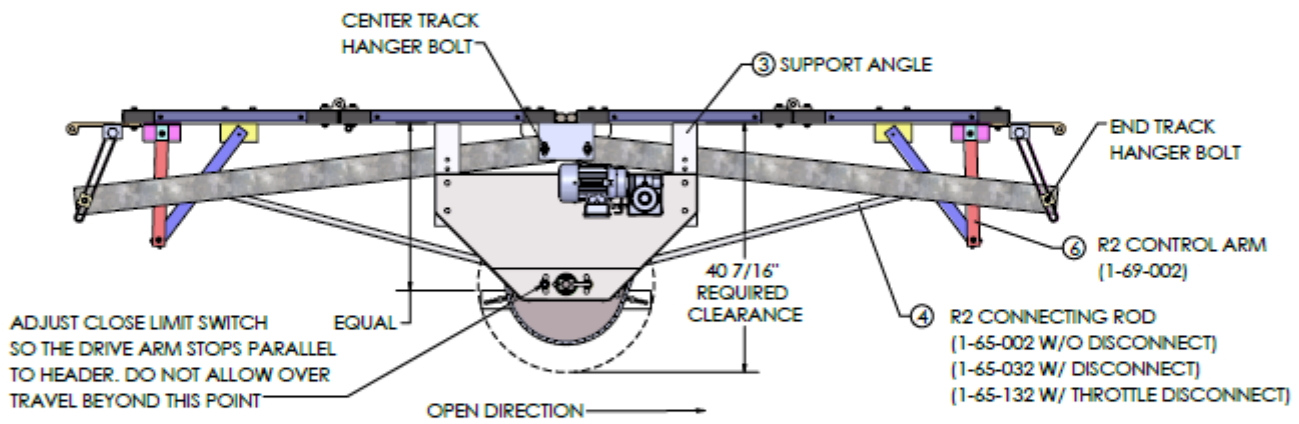
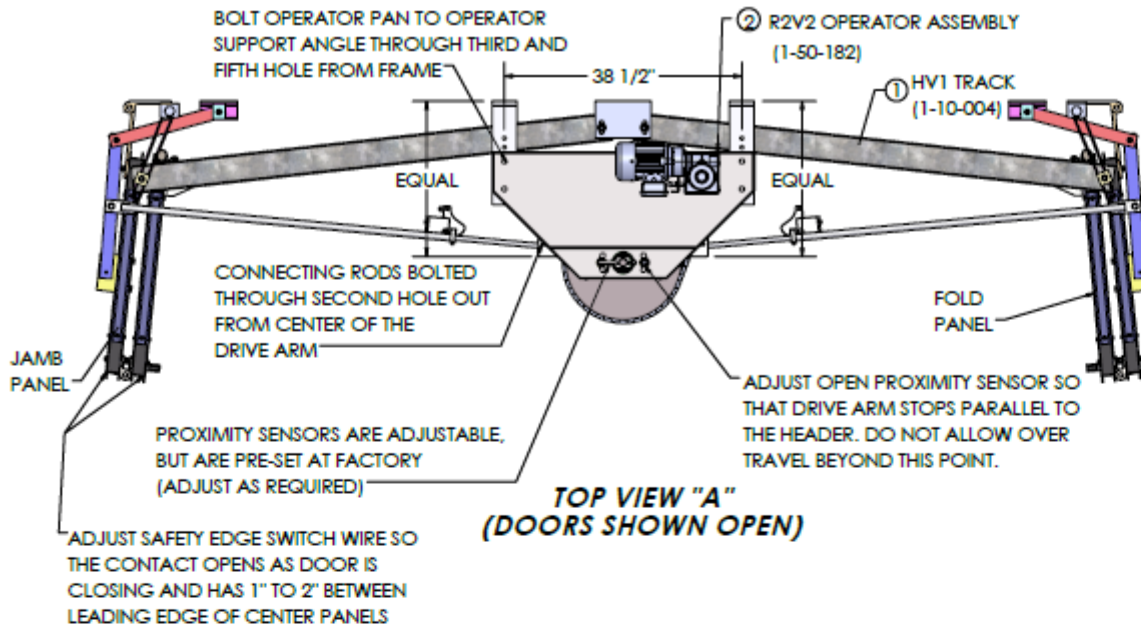
1/2" x 1-1/2" HHCS
OPERATOR ASSEMBLY
OPERATOR SUPPORT
LW 1/2"
HN 1/2"



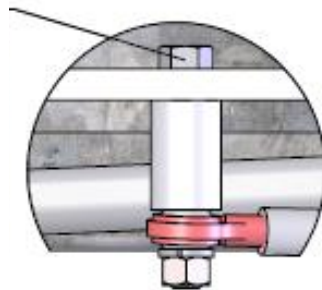
SECTION H-H
SCALE 1 : 12

16"
HEAD
ROOM

Appendix: R2 Operator Layout

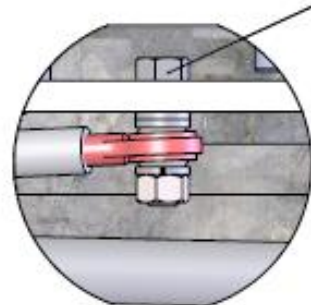


1/2" x 3-1/2" LG HHCS
R2 DRIVE ARM
R1 STANDOFF (1-66-001)
CONNECTING ROD
LW 1/2"
HN 1/2"



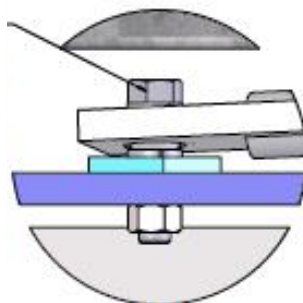
DETAIL D
SCALE 1 : 3

1/2" x 2" LG HHCS
R2 DRIVE ARM
1/2" LW
1/2" LW
CONNECTING ROD
LW 1/2"
HN 1/2"



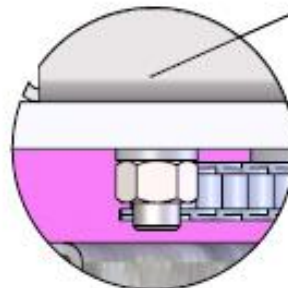
DETAIL E
SCALE 1 : 3

1/2" x 2 1/4" LG HHCS
LW 1/2"
CONNECTING ROD
LW 1/2"
CONTROL ARM
HN 1/2"

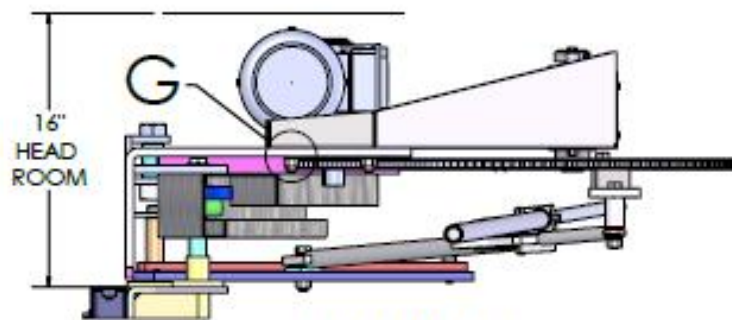


DETAIL F
SCALE 1 : 3

1/2" x 1-1/2 HHCS
OPERATOR ASSEMBLY
SUPPORT ANGLE
LW 1/2"
HN 1/2"



DETAIL G
SCALE 1 : 2



SECTION H-H
SCALE 1 : 12

 **WARNING****To reduce the risk of SEVERE INJURY or DEATH to persons or damage to the door system**

- Safety precautions should be followed at all times.
- All electrical wiring must be done by a certified professional and performed according to regional electrical codes.
- When servicing, always disconnect Operator from main power supply.
- When servicing, always ensure proper use of “Lockout/Tagout” procedures.
- Ensure use of proper wire gauge being used for incoming power line as well as for all device connections.
- Install operator main circuit breaker next to control panel for easy power shut-off.
- The cord fitting for main power cable coming into control panel shall be separate from the motor or any other device.
- Always separate low and high voltage wires in separate conduits. High voltage frequencies may interfere with low voltage wires.
- The Operator should be properly grounded to the building ground and to the main power supply ground lug.
- Always use the appropriate rating circuit breakers for Operator protection.
- Before electrical connection, compare the incoming power supply voltage to the voltage on the Control Panel name plate. Failure to connect appropriate power supply voltage may cause serious damage to the Operator.
- Inspections, service, and repairs should be performed anytime a malfunction is observed or suspected.
- Only qualified persons should perform maintenance on a Door Operator and all safety precautions should be taken into consideration.
- Do not manually disconnect Connecting Rods unless power has been electrically disconnected.
- Do not attempt to disconnect Connecting Rods with the door in the open position.
- Do not attempt to make Limit Switch adjustments unless power has been electrically disconnected.
- Always test the door travel after adjustment with the controls in “Constant Pressure” mode to verify desired travel. Failure to do so may result in damage to the door or injury to persons.

Limited Warranty



Door Engineering and Manufacturing, LLC warrants that all products manufactured by it shall be free from defects in materials and workmanship for a period of one (1) year from thirty (30) days of the date of shipment of product from Door Engineering and Manufacturing. Door Engineering and Manufacturing's obligation under said warranty is to cover the door and mechanical components for five

(5) years, liquid & prime paint one (1) year (excluding fading and normal wear), electrical and safety

components for one (1) year, weather seals and brake pads for one (1) year and labor one (1) year. Materials will be covered in the repair or replacement of products proven to be defective in material or workmanships.

Under said warranty, Door Engineering and Manufacturing must receive back supposed defective part within thirty (30) days of discovery and allowed to properly investigate part to determine if defective. If said part is proven to not be defective, said warranty will not be applicable and Partner will be responsible for all costs incurred. Said warranty excludes any materials which require repair or replacement due to normal wear and operation or abuse.

This limited warranty excludes any Product defects or failures caused after shipment by:

- Improper installation (including, without limitation, misalignment)
- Use in improper applications or conditions or in conjunction with improper materials (including, without limitation, improper lubricants, pastes, solvents or sealants)
- Contact with aggressive chemical agents
- Structural shifting of building
- U.V. Degradation
- Failure to adhere to Door Engineering and Manufacturing's instructions concerning the proper handling, installation, and use of the Product
- Failure to adhere to applicable standards set forth by local laws, codes, or regulations and the applicable industry standards
- Any other improper activities not listed above or damage caused by the fault or negligence of anyone other than Door Engineering and Manufacturing

LIMITATION OF LIABILITY

THE WARRANTIES IN THIS LIMITED WARRANTY ARE THE ONLY WARRANTIES APPLICABLE TO THE PRODUCTS. THERE ARE NO OTHER WARRANTIES, REPRESENTATIONS OR CONDITIONS OF ANY KIND, EXPRESS OR IMPLIED, STATUTORY OR OTHERWISE, WITH RESPECT TO THE PRODUCTS SUPPLIED HEREUNDER INCLUDING, WITHOUT LIMITATION, ANY IMPLIED WARRANTIES OF MERCHANTABILITY OR FITNESS FOR A PARTICULAR PURPOSE. ALL SUCH WARRANTIES ARE HEREBY SPECIFICALLY DISCLAIMED. DOOR ENGINEERING AND MANUFACTURING SHALL NOT BE LIABLE IN THIS RESPECT NOTWITHSTANDING DOOR ENGINEERING AND MANUFACTURING'S ACTUAL KNOWLEDGE OF THE PRODUCT'S INTENDED USE OR ANY ADVICE OR REPRESENTATIONS THAT MAY HAVE BEEN RENDERED BY DOOR ENGINEERING CONCERNING THE DESIGN, MANUFACTURE, FABRICATION, SALE, USE, INSTALLATION OR PROVISION OF THE PRODUCTS. NO STATEMENT, CONDUCT OR DESCRIPTION BY DOOR ENGINEERING AND MANUFACTURING OR ITS REPRESENTATIVES, IN ADDITION TO OR BEYOND THIS LIMITED WARRANTY, SHALL CONSTITUTE A WARRANTY.

THE SOLE AND EXCLUSIVE REMEDY FOR BREACH OF THIS LIMITED WARRANTY, AND THE SOLE AND EXCLUSIVE OBLIGATION OF DOOR ENGINEERING AND MANUFACTURING IN RESPECT OF ANY CLAIMS FOR BREACH OF THIS LIMITED WARRANTY, SHALL BE, AT DOOR ENGINEERING AND MANUFACTURING'S SOLE DISCRETION, (1) THE REPLACEMENT OF THE SAME TYPE, SIZE AND LIKE QUANTITY OF NON- DEFECTIVE PRODUCT, AT THE ORIGINAL POINT OF DELIVERY, OR CREDIT, OR A COMBINATION THEREOF, FOR THE WHOLESALE PURCHASE PRICE OF THE DEFECTIVE PRODUCT. IN NO EVENT SHALL DOOR ENGINEERING AND MANUFACTURING BE LIABLE FOR PERSONAL INJURY, LOST PROFITS, LOSS OF GOODWILL, LOSS OF BUSINESS OPPORTUNITIES, DAMAGE TO REPUTATION, SPECIAL DAMAGES, INDIRECT DAMAGES, DELAY DAMAGES, PUNITIVE DAMAGES, INCLUDING WITHOUT LIMITATION ANY COSTS INCURRED IN CONNECTION WITH THE REMOVAL OR REINSTALLATION OF ALLEGEDLY DEFECTIVE PRODUCTS.

Limited Warranty cont.



CLAIMS

Every claim under this warranty shall be void unless it is made in writing and received by Door Engineering and Manufacturing within thirty (30) days of the date the defect was discovered and, in any event, within one (1) year of the date of invoice. Claims for Product defects that affect the appearance of the Product, such as U.V. degraded Product, however, must be made within thirty (30) days of the date of the receipt of the Product. No claim under this limited warranty will be valid unless:

- Proof of purchase with the date thereof as well as a description of the alleged defect in reasonable detail is presented to the satisfaction of Door Engineering and Manufacturing LLC,
- Written Permission and/or Return Material Authorization (RMA) is obtained from Door Engineering and Manufacturing LLC,
- Door Engineering and Manufacturing is given an opportunity to inspect the allegedly defective product, and
- At Door Engineering and Manufacturing's request, representative samples of the allegedly defective Product are returned to Door Engineering and Manufacturing in accordance with company instructions.

GENERAL

In the event that any provision of this limited warranty is held to be illegal or unenforceable by any court of competent jurisdiction, the remaining provisions of this limited warranty shall remain in full force and effect. This limited warranty shall be governed by the laws of Minnesota, without regard to such state's conflicts of law principles that would require the application of the law of any other jurisdiction. Any and all disputes arising out of or relating to this limited warranty shall be subject to the exclusive jurisdiction of the state or federal courts located in the state of Minnesota or, at Door Engineering and Manufacturing's sole election, to binding arbitration before a single arbitrator pursuant to the American Arbitration Association's Commercial Dispute Resolution Procedures, with such arbitration to take place in the state of Minnesota. Door Engineering and Manufacturing reserves the right to revise this Limited Warranty and Limitation of Liability without notice at any time.

This limited warranty may only be modified or altered in a writing signed by the President of Door Engineering and Manufacturing



Opening to Your Standards