

# MANUAL VERTICAL LIFT DOOR WITH COUNTERBALANCE SYSTEM

**TYPE & THICKNESS OF DOOR:**

COOLER                      FREEZER                      4" THICK                      6" THICK

**OPENING SIZE:**

FINISHED OPENING WIDTH (W.I.C.):  
 FINISHED OPENING HEIGHT (H.I.C.):                      WALL THICKNESS:

**ENTER ROOM TEMPERATURES:**

TEMPERATURE WALL SIDE:                      F (PLEASE PROVIDE)  
 TEMPERATURE TRACK SIDE:                      F (PLEASE PROVIDE)

**CLADDING - TRACK SIDE:**

EMBOSSSED WHITE GALVALUME	SMOOTH WHITE GALVALUME
EMBOSSSED BLACK GALVALUME	SMOOTH GALVALUME
EMBOSSSED GALVALUME	STAINLESS STEEL, #4 FINISH
EMBOSSSED WHITE ALUMINUM	
EMBOSSSED MILL ALUMINUM	
CUSTOM	

**CLADDING - WALL SIDE:**

EMBOSSSED WHITE GALVALUME	SMOOTH WHITE GALVALUME
EMBOSSSED BLACK GALVALUME	SMOOTH GALVALUME
EMBOSSSED GALVALUME	STAINLESS STEEL, #4 FINISH
EMBOSSSED WHITE ALUMINUM	
EMBOSSSED MILL ALUMINUM	
CUSTOM	

**VISION WINDOW:**

HEATED                      NON-HEATED                      14" x 14"                      14" x 24"

**KICK PLATE - TRACK SIDE:**

1/16" DIAMOND PLATE	1/8" DIAMOND PLATE	STAINLESS STEEL
12" TALL                      24" TALL	36" TALL                      48" TALL	Other:

**KICK PLATE - WALL SIDE:**

1/16" DIAMOND PLATE	1/8" DIAMOND PLATE	STAINLESS STEEL
12" TALL                      24" TALL	36" TALL                      48" TALL	Other:

**CASINGS AND HEADER:**

**TRACK SIDE:**

MOLDED PLASTIC POLYMER (MPP)	METAL CLAD MPP
1" CAREFREE	1.5" CAREFREE

**MIRROR SIDE:**

MOLDED PLASTIC POLYMER (MPP)	METAL CLAD MPP
1" CAREFREE	1.5" CAREFREE

**THRU WALL:**

MOLDED PLASTIC POLYMER (MPP)	METAL CLAD MPP
1" CAREFREE	1.5" CAREFREE

**COUNTER BALANCE SYSTEM:**

WEIGHTS  
 TORSION SPRINGS

**LOCKING:**

LOCK TRACK SIDE  
 LOCK TRACK SIDE, CYLINDER OPPOSITE, T-HANDLE BOTH SIDES,

**ADDITIONAL OPTIONS:**

CHAIN HOIST		FLOOR THICKNESS:
ELEVATED COOLER/FREEZER FLOOR		JAMB WALL CAPS WITH INSERTS
JAMB WALL CAPS, NO INSERTS		INSET:
OUTER WIDTH:	OUTER HEIGHT:	

- 1) Lead times begin once all full and final details of drawings are approved.
- 2) All full and final details need approved within 5 business days to secure the quoted lead time. If not received within 5 business days, a new lead time will be provided once the final drawings are approved.



JOB		CUSTOMER NO:		NO. PRINTS	FOR	DATE	REVISED	
		CHASE ORDER NO:						
	SOLD TO		DRAWN BY:					
			SHEET	OF				

# MANUAL VERTICAL LIFT DOOR WITH COUNTERBALANCE SYSTEM

**WICKET DOOR OPTIONS**

**SIZING:**  
 WIDTH:                      **HANDING:**  
                                     HINGED ON LEFT  
 HEIGHT:                      HINGED ON RIGHT

**HINGE DETAILS:**  
 STANDARD CHROME           STANDARD WHITE  
 STAINLESS STEEL  
 HINGE QTY:

**PULL SIDE LATCH DETAILS:**  
 CHROME K-56 W/ PADLOCKING           CHROME K-56 W/ KEY LOCK  
 SOFT TOUCH W/ PADLOCKING           SOFT TOUCH W/ KEY LOCK  
 STAINLESS W/ PADLOCKING           STAINLESS W/ KEY LOCK  
 WHITE K-56 W/ PADLOCKING           WHITE K-56 W/ KEY LOCK

**PUSH SIDE LATCH DETAILS:**  
 RECESSED INSIDE RELEASE

**CLOSER:**  
 STD CLOSER  
 HEAVY DUTY CLOSER  
 HEAVY DUTY CLOSER, SS

**APPLICATION (REQUIRED):**

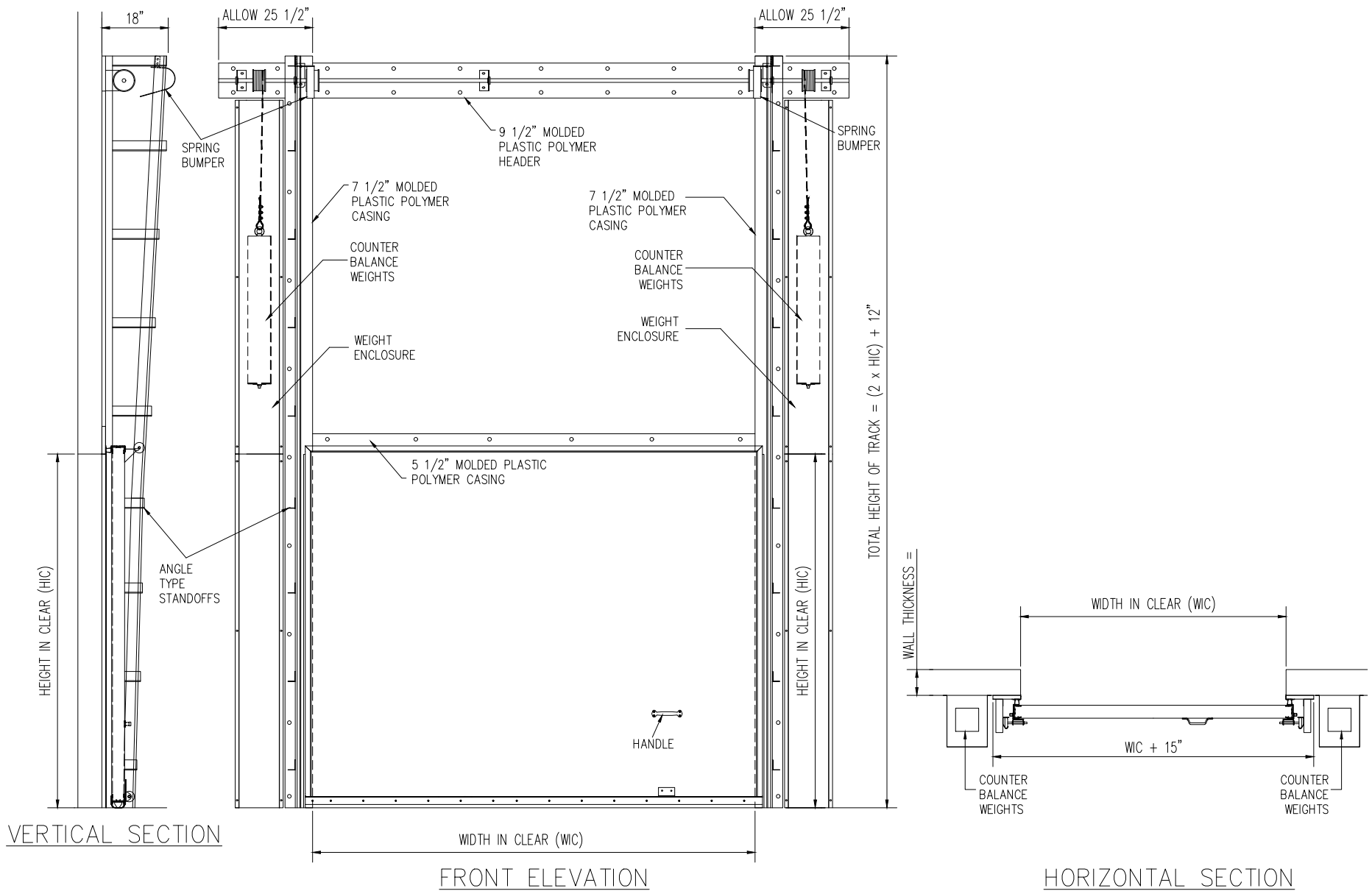
- |    |   |     |    |
|----|---|-----|----|
| 1. | IS THIS DOOR ON A BOX GREATER THAN 3000 SQ FEET?  | YES | NO |
| 2. | IF NO, IS BOX LOCATED IN COLD STORAGE FACILITY/ATMOSPHERE WITH FLOOR AREA 3000 SQ FEET OR LARGER? (A/C IS NOT COLD STORAGE) | YES | NO |
| 3. | DOES THIS APPLICATION INVOLVE MEDICAL, SCIENTIFIC, OR RESEARCH FACILITIES?  | YES | NO |

**SPECIAL INSTRUCTIONS TO MANUFACTURER:**



JOB		CUSTOMER NO:		NO. PRINTS	FOR	DATE	REVISED	
		CHASE ORDER NO:						
	SOLD TO		DRAWN BY:					
			SHEET	OF				

# MANUAL VERTICAL LIFT DOOR WITH COUNTERBALANCE SYSTEM



# HERCULES

JOB	CUSTOMER NO:		NO. PRINTS	FOR	DATE	REVISED
	CHASE ORDER NO:					
	DRAWN BY:					
	SOLD TO	SHEET	OF			