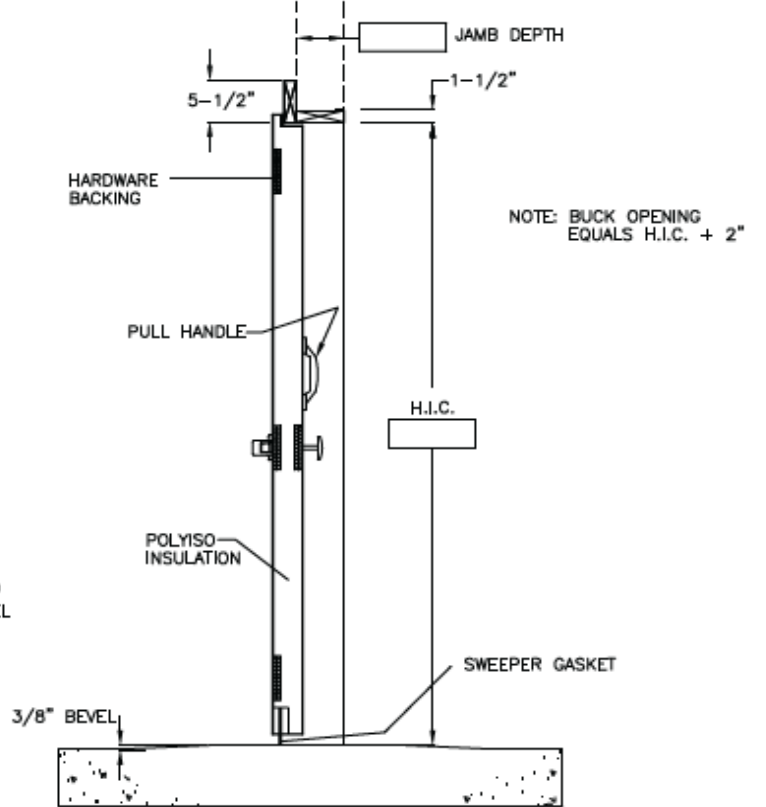
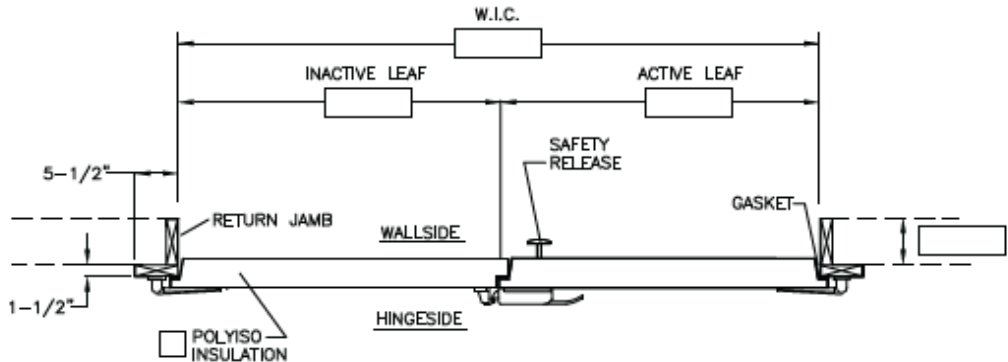


NOTE: BUCK OPENING = W.I.C. + 4"



NOTE: BUCK OPENING EQUALS H.I.C. + 2"



PLEASE PROVIDE WALLSIDE TEMP.

= \_\_\_\_\_ °F

PLEASE PROVIDE HINGESIDE TEMP.

= \_\_\_\_\_ °F

NOTES	
1. ( ) LATCH—FINISH:	
2. ( ) HINGES—FINISH:	
3. HEAT PROVIDED IN PERIMETER OF DOOR FRAME, BOTTOM OF DOOR PANELS, AND LEADING EDGE OF INACTIVE LEAF.	
CODE	FINISH
	GALV. CLEAR WASH—SMOOTH
	WHITE STUCCO EMBOSSED GALV. STEEL
	STAINLESS STEEL
	WHITE STUCCO EMBOSSED ALUMINUM
	MILL FINISH STUCCO EMBOSSED ALUMINUM
	MILL FINISH STUCCO EMBOSSED STEEL

DOOR NO.	QTY.	W.I.C.	H.I.C.	USE	FINISH		HARDWARE FINISH	RETURN DEPTH
					COVERING	GAGE		
				FREEZER				

Job Name: Name: \_\_\_\_\_

SCALE: NONE

DATE: \_\_\_\_\_

For: \_\_\_\_\_

HERCULES FLUSH SILL DOUBLE INFITTING FREEZER

DRAWN BY: \_\_\_\_\_

Job No. \_\_\_\_\_

DRAWING NUMBER \_\_\_\_\_