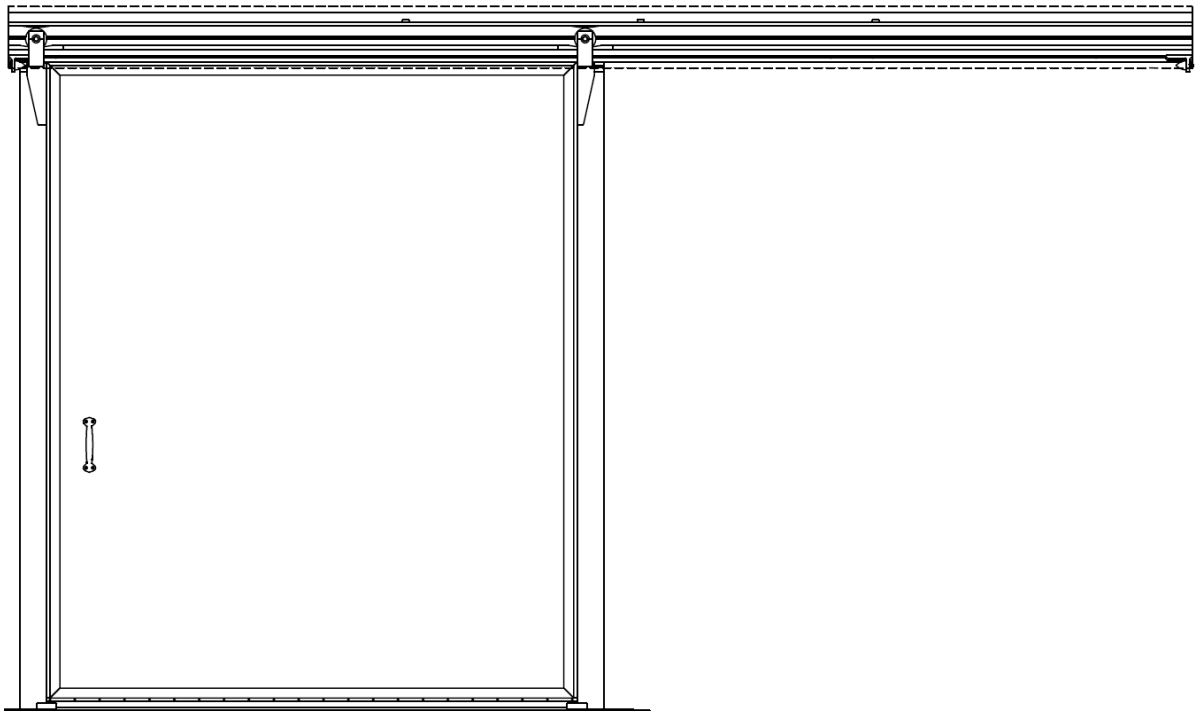


HERCULES[®]

ATLAS SLIDING DOOR

ELECTRIC INSTALLATION INSTRUCTIONS



HERCULES[®]

ATLAS SLIDING DOOR

ELECTRIC INSTALLATION INSTRUCTIONS

Chase Doors products are time tested to function properly if installed in accordance with the installation instructions. It is in the Installers best interest that the doors be installed properly. Please read and follow the installation instructions carefully to avoid costly time on the job correcting installation mistakes. Chase Doors warrants our products for defects in material and workmanship only. Since the Installation of our products is beyond our control, Chase Doors does not warrant labor.

A parts box containing all the needed hardware and additional parts required to complete the installation is inside the door box. Please do not misplace these parts, as Chase doors will not replace them free of charge.

It is the responsibility of the installer to make sure that the mounting structure (walls) to which the door is to be attached is straight, level and on the same plane with each other around the door opening as well as the floor surface. If these conditions cannot be met the vertical casings and header must be shimmed to ensure that the door, when properly adjusted will provide the proper sealing required. The floor must be flat, level and in good condition for the bottom seal to be effective.

WARNING!

Only qualified and experienced cold storage door installers and electricians should attempt to install or service this product. Installation by non-qualified personnel may result in a serious injury during the installation process and/or during actual operation and use of this door.

AVERTISSEMENT!

Seulement du personnel qualifié devrait faire l'installation de cette porte.
L'installation fait par du personnel non-qualifié, peut entraîner des blessures graves durant l'installation et / ou l'utilisation de la porte.

HERCULES[®]

ATLAS SLIDING DOOR

ELECTRIC INSTALLATION INSTRUCTIONS



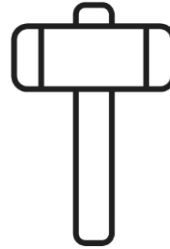
Metric & Imperial
Wrench Set



Utility Knife



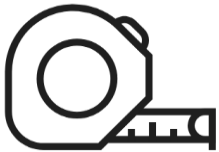
Hammer



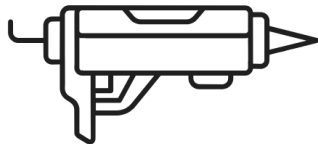
Rubber Mallet



Level



Measuring Tape



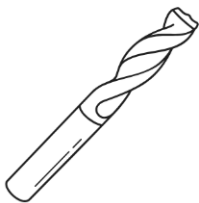
Caulking Gun



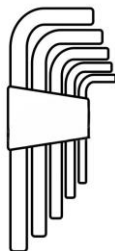
Butyl Caulk



Electric Drill



Drill Bit Set



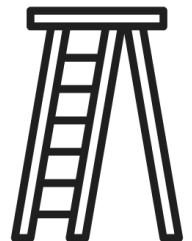
Metric Allen Wrench
Set



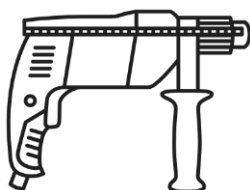
Shims



Prybar



Ladder



Hammer Drill



Laser Level



Forklift

HERCULES[®]

ATLAS SLIDING DOOR

ELECTRIC INSTALLATION INSTRUCTIONS



1. Verify opening width matches door provided.



2. Verify opening height matches door provided.



3. Ensure opening is square, plumb and that the left & right side of the opening are on the same plane using a laser level.

HERCULES[®]

ATLAS SLIDING DOOR

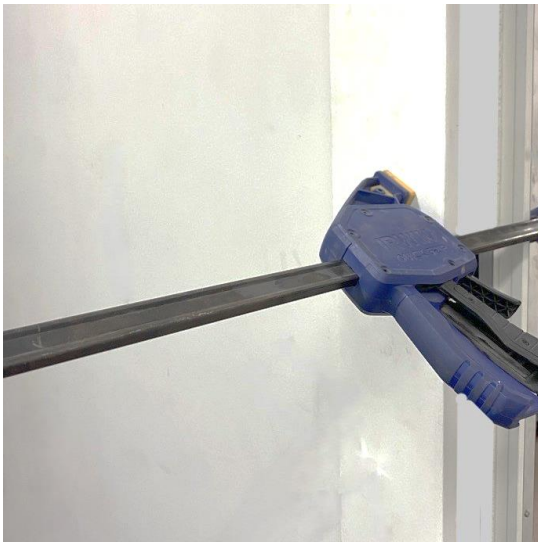
ELECTRIC INSTALLATION INSTRUCTIONS



4. **Apply Butyl Caulk** to wall side of casing, or on the wall, 1" from the edge/opening.



5. **Press leading edge casing against wall** at edge of opening on closed side.



6. **Secure casing** (and mirror casing if applicable) to the wall using a C-clamp.



7. **Level casing** to ensure they are straight & plum.

HERCULES[®]

ATLAS SLIDING DOOR

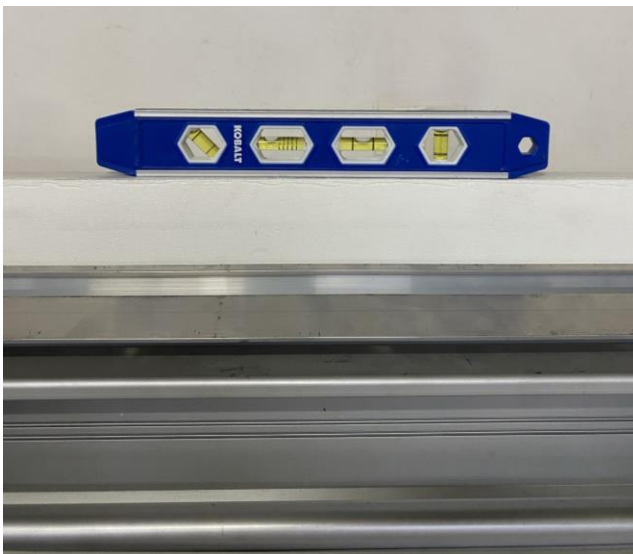
ELECTRIC INSTALLATION INSTRUCTIONS



8. Set header onto legs of face casing.
Note: T-slotted part of header should be flush with outside of legs of face casings.



9. Secure header casing (& if applicable mirror casing) to the wall using c-clamps.



10. Level the top of the header (not the metal track). If header is not level, shim the base of either vertical face casings.



HERCULES[®]

ATLAS SLIDING DOOR

ELECTRIC INSTALLATION INSTRUCTIONS



11. Using a 3/8" drill bit, **drill through pre-drilled holes & wall (& if applicable, mirror casing) along the face casing.**



12. **Fasten casing to the wall** with fasteners provided. Repeat steps 4-9 for the trailing edge vertical casing.

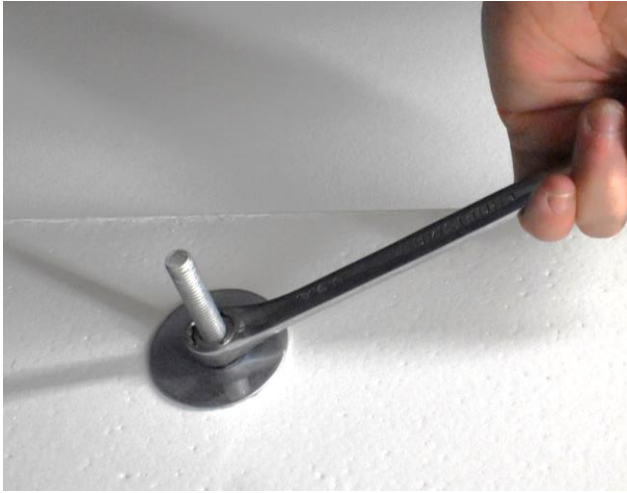


13. Using a 3/8" drill bit, **drill through pre-drilled holes & wall (& if applicable, mirror casing) along the face casing above the track & install fasteners provided.**

HERCULES[®]

ATLAS SLIDING DOOR

ELECTRIC INSTALLATION INSTRUCTIONS



14. On the other side of the wall, **fasten a washer & a nut on the bolts.**

Note: Do NOT overtighten or cut bolts off at this time.



15. Repeat steps 13-14 for all holes **along the header** before removing c-clamps.



16. **Press dart gasket into the T-slotted grooves** around the perimeter of the opening.

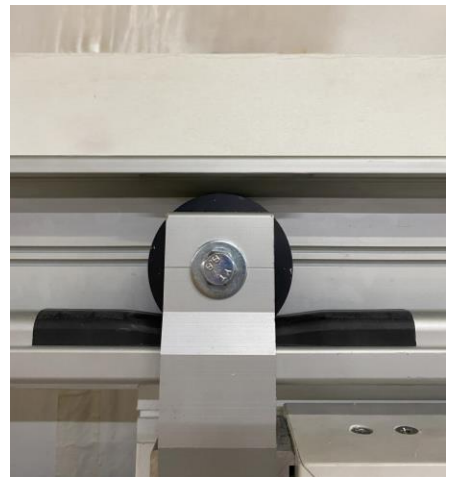
HERCULES[®]

ATLAS SLIDING DOOR

ELECTRIC INSTALLATION INSTRUCTIONS



17. Loosen & remove the two **drop out security parts** from the inner top of the track.

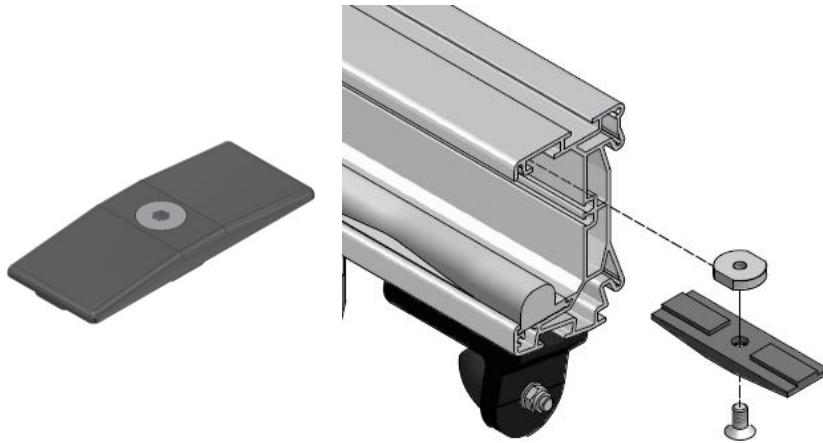


18. **Lift the door onto the track** by simultaneously angling the door's wheels into the two black dented plastic treads on the rail.

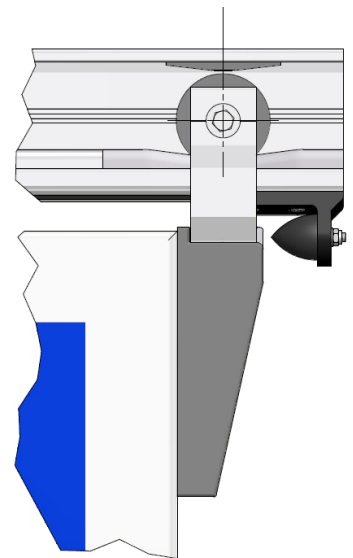
HERCULES[®]

ATLAS SLIDING DOOR

ELECTRIC INSTALLATION INSTRUCTIONS



19. Slide drop out security part back into the inner top of the track.



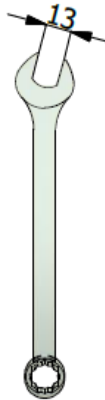
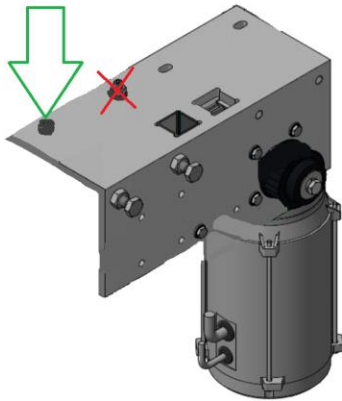
20. Center the drop out security part with the dent plastic tread & tighten down using an Allen wrench. Repeat steps 19 & 20 with the other drop out security part.

Note: Door wheels shouldn't hit the drop out security part when opening & closing.

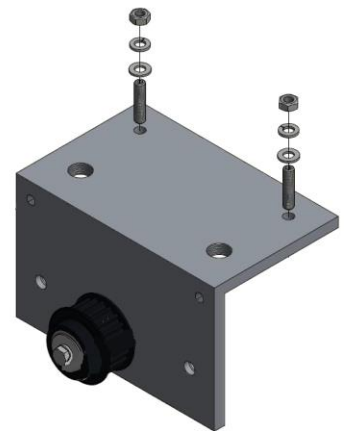
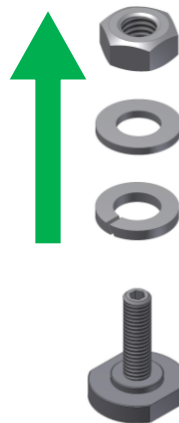
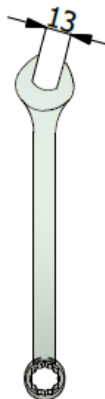
HERCULES[®]

ATLAS SLIDING DOOR

ELECTRIC INSTALLATION INSTRUCTIONS



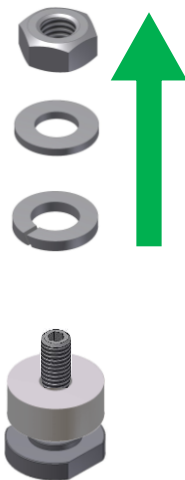
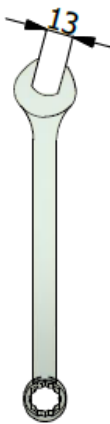
21. Find the motor on the track & **remove the inner (NOT THE OUTER) nut & washers** attaching the motor to the track. *Note: do not loosen the bolts.*



22. Find the runner on the track & **hold onto the runner while removing nuts & washers** attaching it to the header. *Note: do NOT loosen the bolts.*

HERCULES® ATLAS SLIDING DOOR

ELECTRIC INSTALLATION INSTRUCTIONS



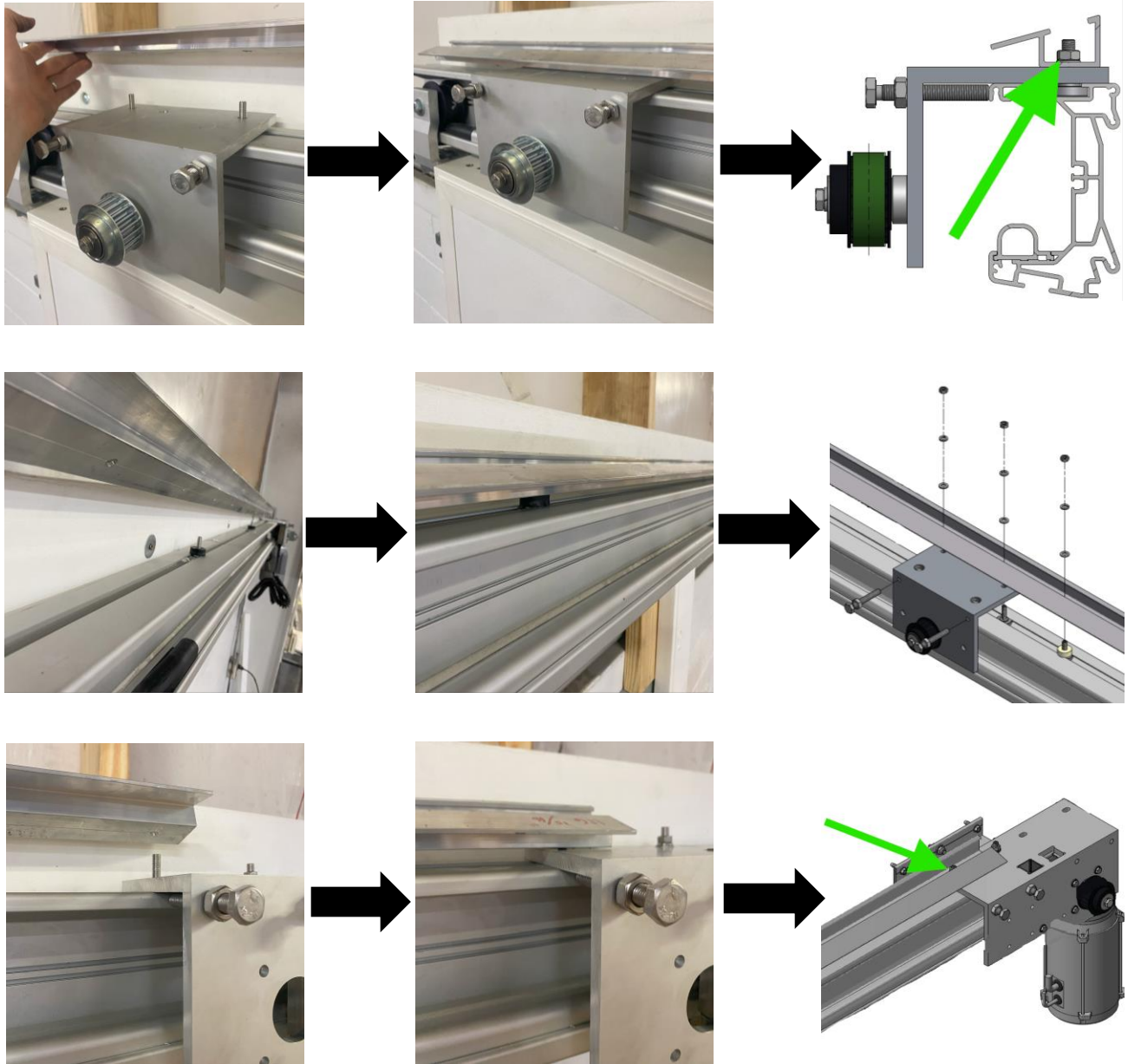
23. Using a 13mm wrench, **remove nuts & washers off** the other **hood bracket bolts** on top of the track.

Note: do NOT remove the spacer or loosen the bolts.

HERCULES[®]

ATLAS SLIDING DOOR

ELECTRIC INSTALLATION INSTRUCTIONS

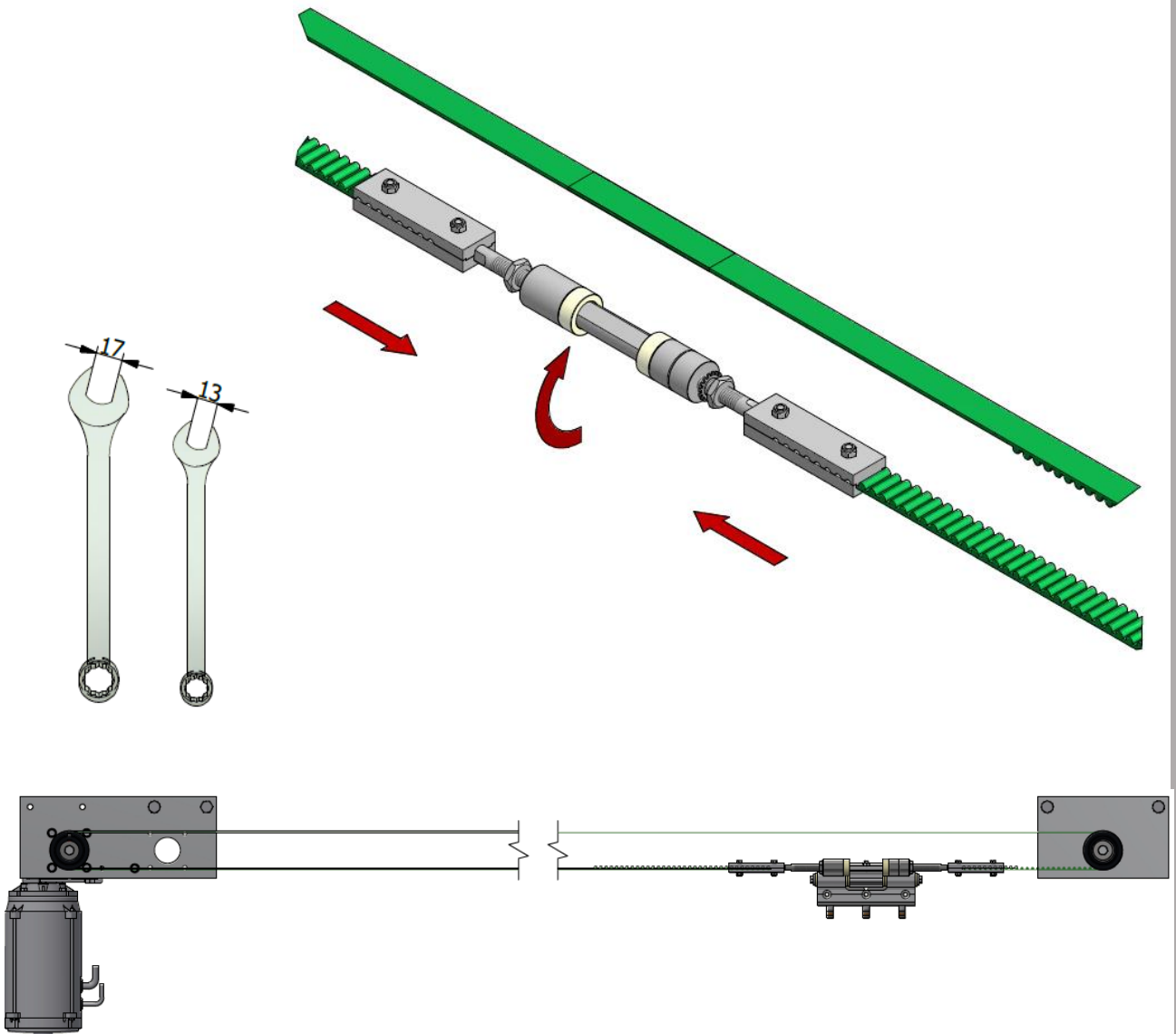


24. Lay the hood bracket on top of the track (bolts will stick through the holes in the hood bracket) & fasten down using the washers & nuts using a 13mm wrench.

HERCULES[®]

ATLAS SLIDING DOOR

ELECTRIC INSTALLATION INSTRUCTIONS



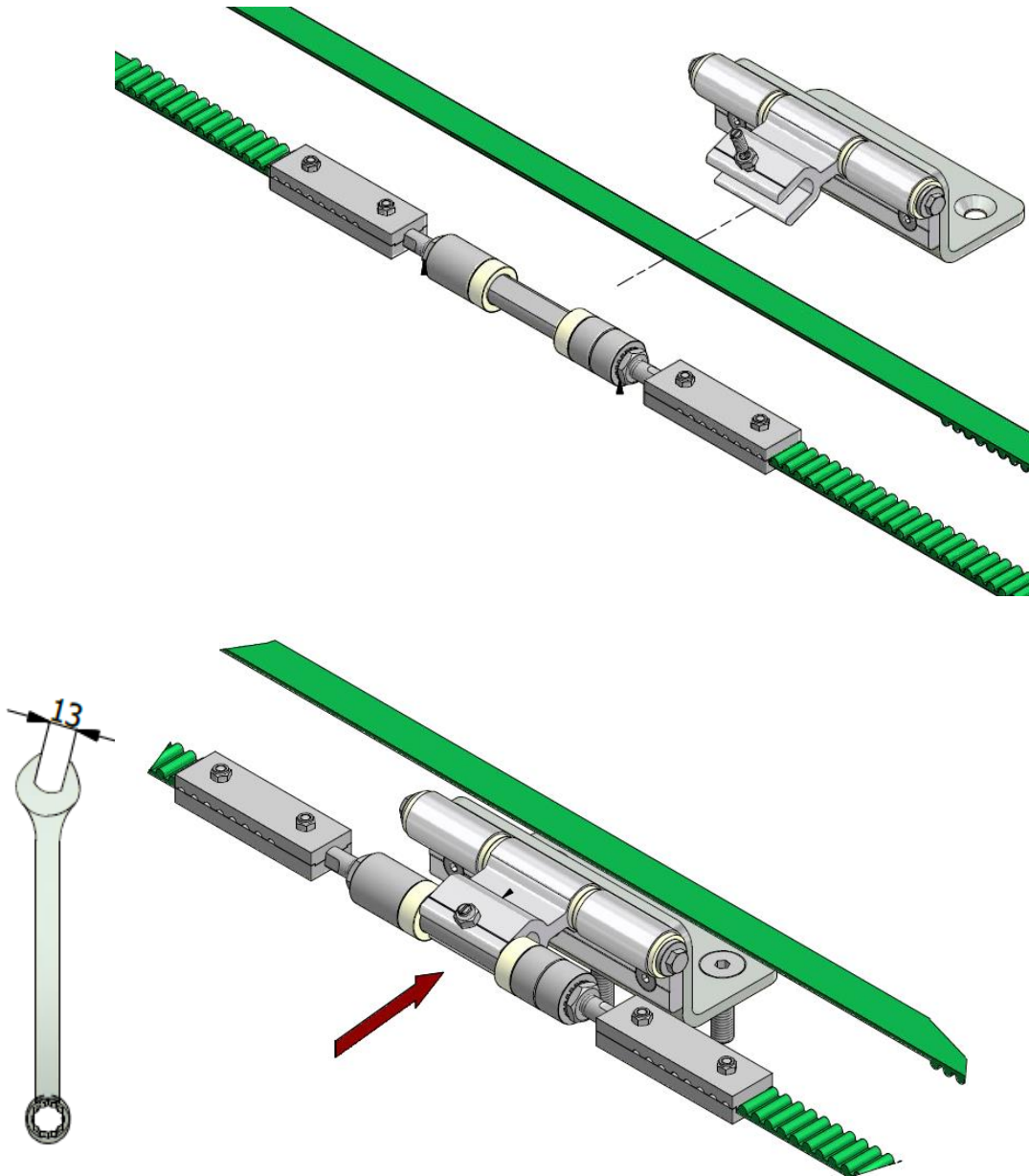
25. Wrap belt around motor & runner, then tighten the belt, using a wrench & rotate the center of the belt connector until the belt is taught

Note: when done correctly, the belt should not be twisted

HERCULES[®]

ATLAS SLIDING DOOR

ELECTRIC INSTALLATION INSTRUCTIONS

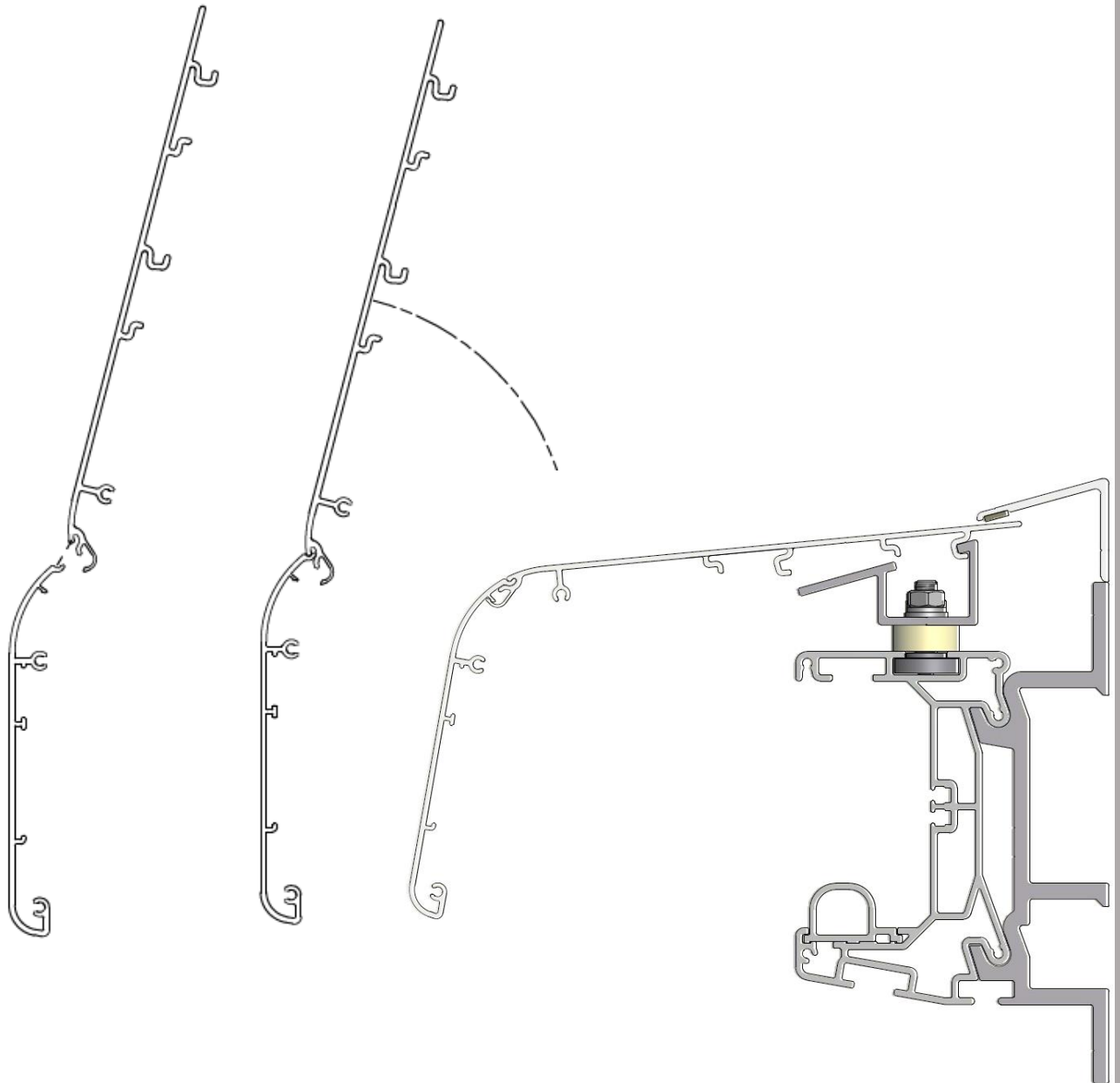


26. **Feed the center of the belt connector to the electrical connect on top of the door. Tighten down the bolt & nut on the electrical connect to fasten them together.**

HERCULES[®]

ATLAS SLIDING DOOR

ELECTRIC INSTALLATION INSTRUCTIONS



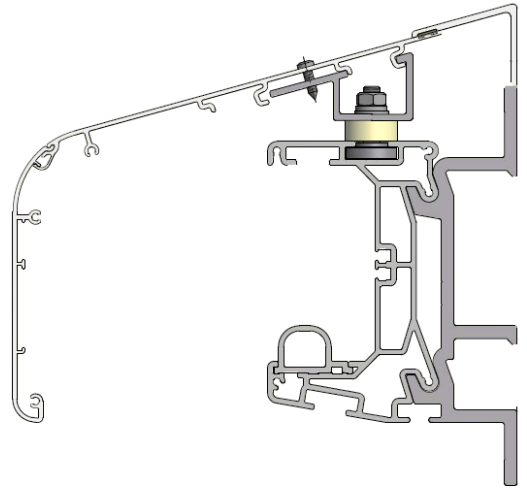
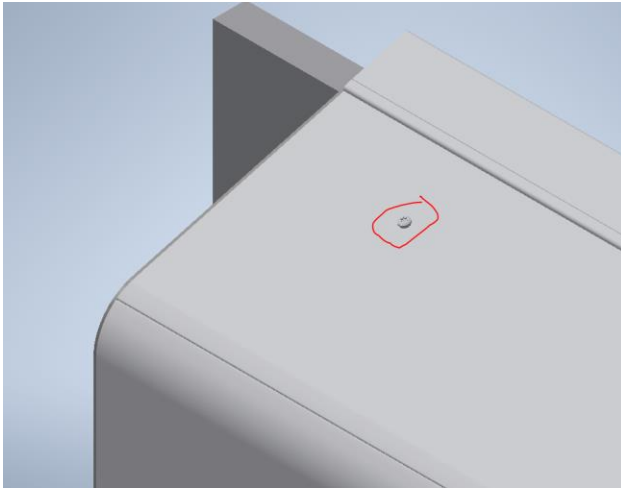
27. Assemble the two long aluminum hood cover pieces and then mount them to the hood bracket on top of the track.

Note: ensure these are aligned with both ends of the rail profile.

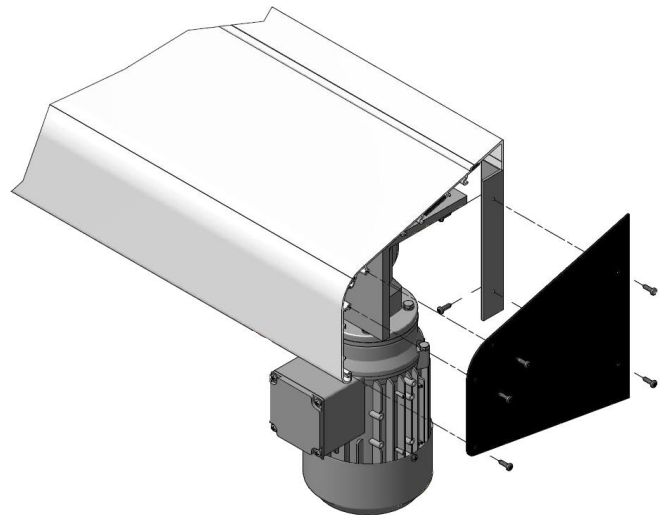
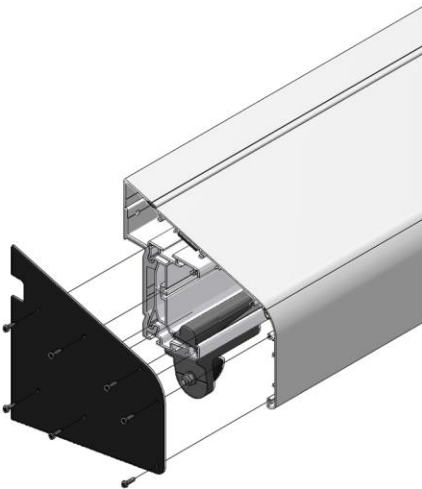
HERCULES[®]

ATLAS SLIDING DOOR

ELECTRIC INSTALLATION INSTRUCTIONS



28. Fasten the hood & rail profile together by **screwing fasteners** with a T20 star bit **through the holes at the top of the hood into the rail profile**.



29. **Attach the black hood covers** on each side of the hood using a T20 star bit.

HERCULES[®]

ATLAS SLIDING DOOR

ELECTRIC INSTALLATION INSTRUCTIONS

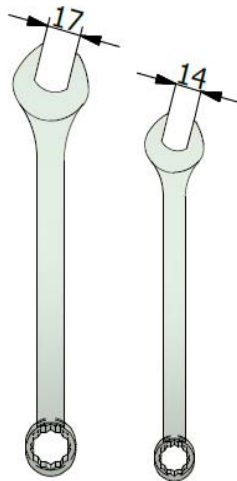
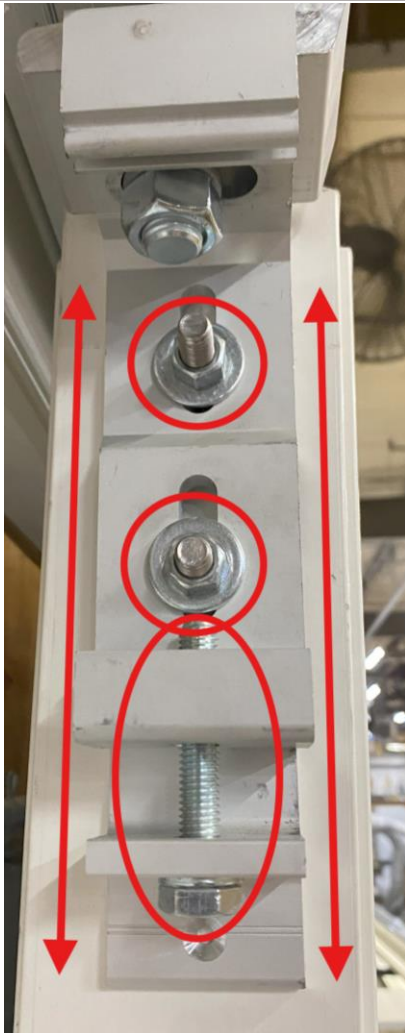


30/31. Scan the QR code to watch a video on how to perform steps 30 & 31 OR flip the page to review the next step.

HERCULES[®]

ATLAS SLIDING DOOR

ELECTRIC INSTALLATION INSTRUCTIONS



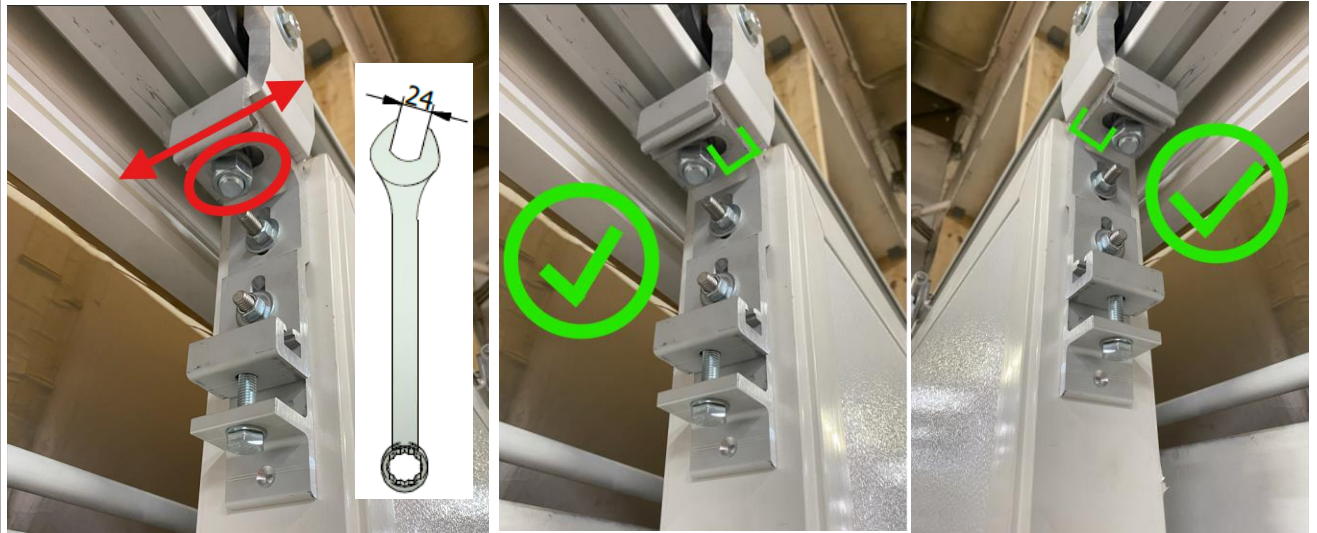
30. To adjust door up or down:

- Close the door
- Using a 14 mm wrench, loosen the top two horizontal nuts (circled above)
- Using a 17 mm wrench, adjust inverted bolt to raise/lower door to ensure:
 - Door opens & closes smoothly
 - Panel is relatively level
 - Gasketing along the base of panel is contacting the floor (no light leakage)
- Re-tighten the top two bolts

HERCULES[®]

ATLAS SLIDING DOOR

ELECTRIC INSTALLATION INSTRUCTIONS



31. To adjust the door closer or further from the wall

- a. Close the door
- b. Using a 24 mm wrench, loosen the top upside-down nut (circled above)
- c. Lightly press the panel against the gasketing
- d. Fasten the top upside-down nut (circled above)
- e. Test the door to ensure
 - a. Door opens & closes smoothly (not dragging against gasketing in the opening)
 - b. No light leakage around the upper half of the opening when in the closed position.

HERCULES[®]

ATLAS SLIDING DOOR

ELECTRIC INSTALLATION INSTRUCTIONS



33-41. Scan the QR code to watch a video on how to perform steps 33-41 OR flip the page to review the next step.

HERCULES[®]

ATLAS SLIDING DOOR

ELECTRIC INSTALLATION INSTRUCTIONS



33. Open door slightly, slide the straight edge under the trailing edge of the door & butt it flush against edge of opening.



34. Slide bottom channel guide under the leading edge until it touches the straight edge & close the door.



35. Lightly press against the door to ensure it contacts the gasketing along the side of the opening, **mark in the center of the slotted holes.**



HERCULES[®]

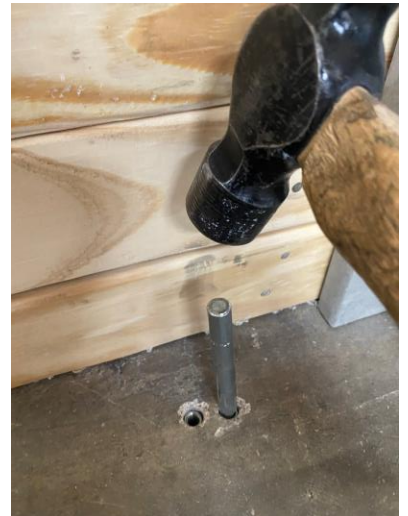
ATLAS SLIDING DOOR

ELECTRIC INSTALLATION INSTRUCTIONS



37. Remove the bottom channel guide & using a ½" drill bit, **drill 1.5"** into the floor where you marked the slotted holes.

Note: Tape your drill bit at 1.5". Do NOT drill all the way through the concrete.



38. Remove any debris from the hole, **place the anchors into the holes & set the anchor by hammering the anchor setting tool.**

Note: the anchors should ideally be flush with the floor.

HERCULES[®]

ATLAS SLIDING DOOR

ELECTRIC INSTALLATION INSTRUCTIONS



39. Place the bottom channel guide over the set anchors and **screw in the round head screws** using a 1/4" hex bit. Adjust bottom channel guide location to ensure that the door is making full contact with the gasketing along this side of the opening.



40. Once the door is contacting the gasket along this side of the opening, **drill 3/8" pilot holes through the two other holes**. Then repeat the past three steps for the other two holes.

HERCULES[®]

ATLAS SLIDING DOOR

ELECTRIC INSTALLATION INSTRUCTIONS



41. Repeat process for the snubber for the leading edge of the panel.

Note: lightly push the door into the frame before installing the snubber.



42. Ensure door opens & closes smoothly & no light leaks around the perimeter when closed.



43. Secure the two black plastic covers over the suspension points on both sides of the panel.

HERCULES[®]

ATLAS SLIDING DOOR

ELECTRIC INSTALLATION INSTRUCTIONS



44. Cut off & file excess bolts.



45. Install plastic white covers over the nuts on the inside and recessed holes on the outside face casing.



46. Remove protective plastic wrapping from the door.



47. Clean door & track hood with wet rag.

HERCULES[®]

ATLAS SLIDING DOOR

ELECTRIC INSTALLATION INSTRUCTIONS

The next two pages will set the door positions.
These steps will differ based on the encoder used.

All Electrical work must be performed by a licensed electrician. All electrical work must conform to the National Electric Code as well as any state or local requirements.

*Tous les travaux d'électricité doivent être faits par un électricien qualifié.
Tous les travaux d'électricité doivent être faites conformes au Code national de aux normes du code du batiment et locale.*



48. Mount the control box to the wall near the opening.

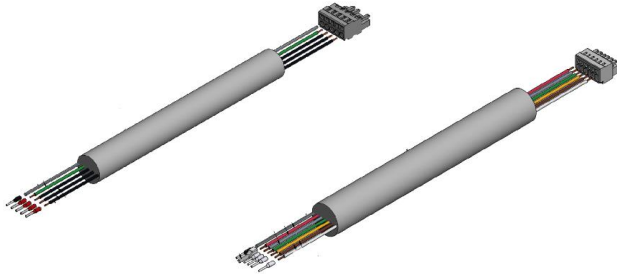


49-66. Scan QR code to watch a video on how to perform steps 49-66 OR flip the page to review the next step.

HERCULES[®]

ATLAS SLIDING DOOR

ELECTRIC INSTALLATION INSTRUCTIONS



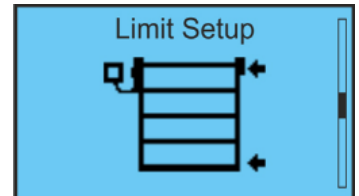
49. Plug in power supply and connect the pre-fabricated cable for the encoder and motor.



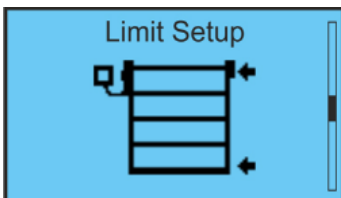
50. Open the control box by removing the screws located at all four corners of the box.



51. Press menu/enter



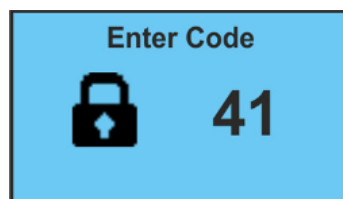
52. Press down 2x to get to Limit Setup.



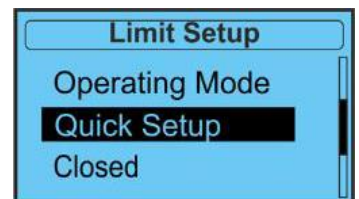
53. Press menu/enter.



54. Press up or down to enter the code.



55. Press menu/enter to enter the code.

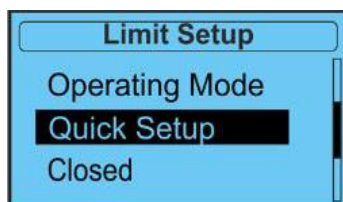


56. Press down to get to quick setup.

HERCULES[®]

ATLAS SLIDING DOOR

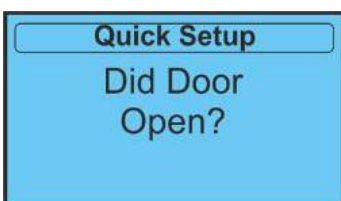
ELECTRIC INSTALLATION INSTRUCTIONS



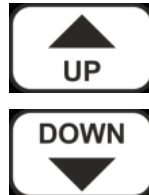
57. Press menu/enter.



58. Press & hold up (door will auto-stop).



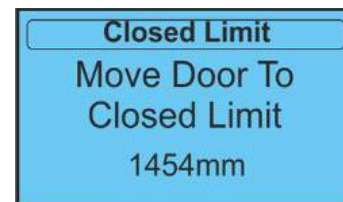
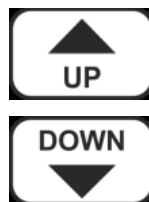
59. Up = yes, down = no



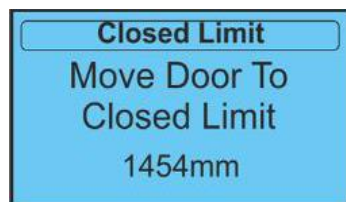
60. Hold up or down to open limit.



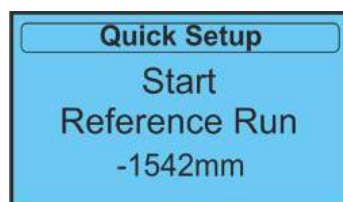
61. Once door is at limit, click menu/enter.



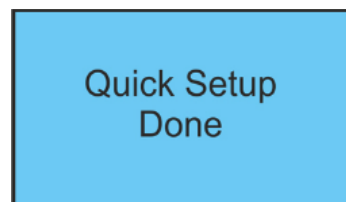
62. Hold up or down to closed limit.



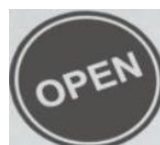
63. Once door is at limit, click menu/enter.



64. After reference run, click menu/enter



65. Press menu/enter to enter the code.



66. Press open on outside of box to test.

HERCULES[®]

ATLAS SLIDING DOOR

ELECTRIC INSTALLATION INSTRUCTIONS

If your door is a cooler, you have completed the install.

If your door is a freezer, please follow the next five steps.

All Electrical work must be performed by a licensed electrician. All electrical work must conform to the National Electric Code as well as any state or local requirements.

*Tous les travaux d'électricité doivent être faits par un électricien qualifié.
Tous les travaux d'électricité doivent être faites conformes au Code national
de aux normes du code du batiment et locale.*

HERCULES[®]

ATLAS SLIDING DOOR

ELECTRIC INSTALLATION INSTRUCTIONS

These steps are for a freezer doors only.



67. On the trailing side of the panel, **remove the cover for the electrical box.**



68. **Insert supply power** through the hollow gray bolt into the electrical box.



69. Using a wrench, **tighten the plastic nut** to secure the power supply cord to the electrical box.



70. **Wire the black (L1) & white (L2) of the supply power to the appropriate terminal strip.**

HERCULES[®]

ATLAS SLIDING DOOR

ELECTRIC INSTALLATION INSTRUCTIONS

These steps are for a freezer doors only.



71. Reattach electrical box cover.

Note: Do NOT turn the heater on until the freezer is in operation. Failure to do so will cause the heater to fail.