

# MANUAL BI-PARTING SLIDE DOOR (EXTREME HEAVY DUTY)

**TYPE & THICKNESS OF DOOR:**

COOLER                      FREEZER                      4" THICK                      6" THICK

**OPENING SIZE:**

FINISHED OPENING WIDTH (W.I.C.):  
FINISHED OPENING HEIGHT (H.I.C.):                      WALL THICKNESS:

**ENTER ROOM TEMPERATURES:**

TEMPERATURE INSIDE BOX:                      F (PLEASE PROVIDE)  
TEMPERATURE OUTSIDE BOX:                      F (PLEASE PROVIDE)

**CLADDING - FRONT SIDE:**

EMBOSSSED WHITE GALVALUME	SMOOTH WHITE GALVALUME
EMBOSSSED BLACK GALVALUME	SMOOTH GALVALUME
EMBOSSSED GALVALUME	STAINLESS STEEL, #4 FINISH
EMBOSSSED WHITE ALUMINUM	
EMBOSSSED MILL ALUMINUM	
CUSTOM	

**CLADDING - BACK SIDE:**

EMBOSSSED WHITE GALVALUME	SMOOTH WHITE GALVALUME
EMBOSSSED BLACK GALVALUME	SMOOTH GALVALUME
EMBOSSSED GALVALUME	STAINLESS STEEL, #4 FINISH
EMBOSSSED WHITE ALUMINUM	
EMBOSSSED MILL ALUMINUM	
CUSTOM	

**VISION WINDOW:**

HEATED                      NON-HEATED                      14" x 14"                      14" x 24"

**EXTERIOR (TRACK SIDE) KICK PLATE:**

1/16" DIAMOND PLATE	1/8" DIAMOND PLATE	STAINLESS STEEL
12" TALL	24" TALL	36" TALL                      48" TALL                      Other:

**INTERIOR (WALL SIDE) KICK PLATE:**

1/16" DIAMOND PLATE	STAINLESS STEEL
12" TALL	24" TALL                      36" TALL                      48" TALL                      Other:

**CASINGS AND HEADER:**

**TRACK SIDE:**

MOLDED PLASTIC POLYMER (MPP)(STD)	METAL CLAD MPP
1" CAREFREE	1.5" CAREFREE

**MIRROR SIDE (OPTIONAL):**

MOLDED PLASTIC POLYMER (MPP)	METAL CLAD MPP
1" CAREFREE	1.5" CAREFREE

**THRU WALL (OPTIONAL):**

MOLDED PLASTIC POLYMER (MPP)	METAL CLAD MPP
1" CAREFREE	1.5" CAREFREE

**ADDITIONAL OPTIONS:**

OUT BOARD ROLLER		
INSIDE SAFETY LOCK WITH RELEASE		
TRACK HOOD	STAINLESS	POWDER COATED
ELEVATED COOLER/FREEZER FLOOR		FLOOR THICKNESS:
JAMB WALL CAPS, NO INSERTS		JAMB WALL CAPS WITH INSERTS
OUTER WIDTH:	OUTER HEIGHT:	INSET:

**WICKET DOOR OPTIONS**

**SIZING:**

WIDTH:  
HEIGHT:

**HANDING:**

HINGED ON LEFT  
HINGED ON RIGHT

**LEAF:**

LEFT LEAF  
RIGHT LEAF

**HINGE DETAILS:**

STANDARD CHROME	STANDARD WHITE
STAINLESS STEEL	
HINGE QTY:	

**PULL SIDE LATCH DETAILS:**

CHROME K-56 W/ PADLOCKING	CHROME K-56 W/ KEY LOCK
SOFT TOUCH W/ PADLOCKING	SOFT TOUCH W/ KEY LOCK
STAINLESS W/ PADLOCKING	STAINLESS W/ KEY LOCK
WHITE K-56 W/ PADLOCKING	WHITE K-56 W/ KEY LOCK

**PUSH SIDE LATCH DETAILS:**

RECESSED INSIDE RELEASE

1) Lead times begin once all full and final details of drawings are approved.

**CLOSER:**

STD CLOSER  
HEAVY DUTY CLOSER  
HEAVY DUTY CLOSER, SS

2) All full and final details need approved within 5 business days to secure the quoted lead time. If not received within 5 business days, a new lead time will be provided once the final drawings are approved.

**APPLICATION (REQUIRED):**

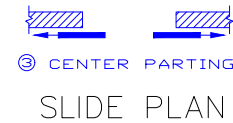
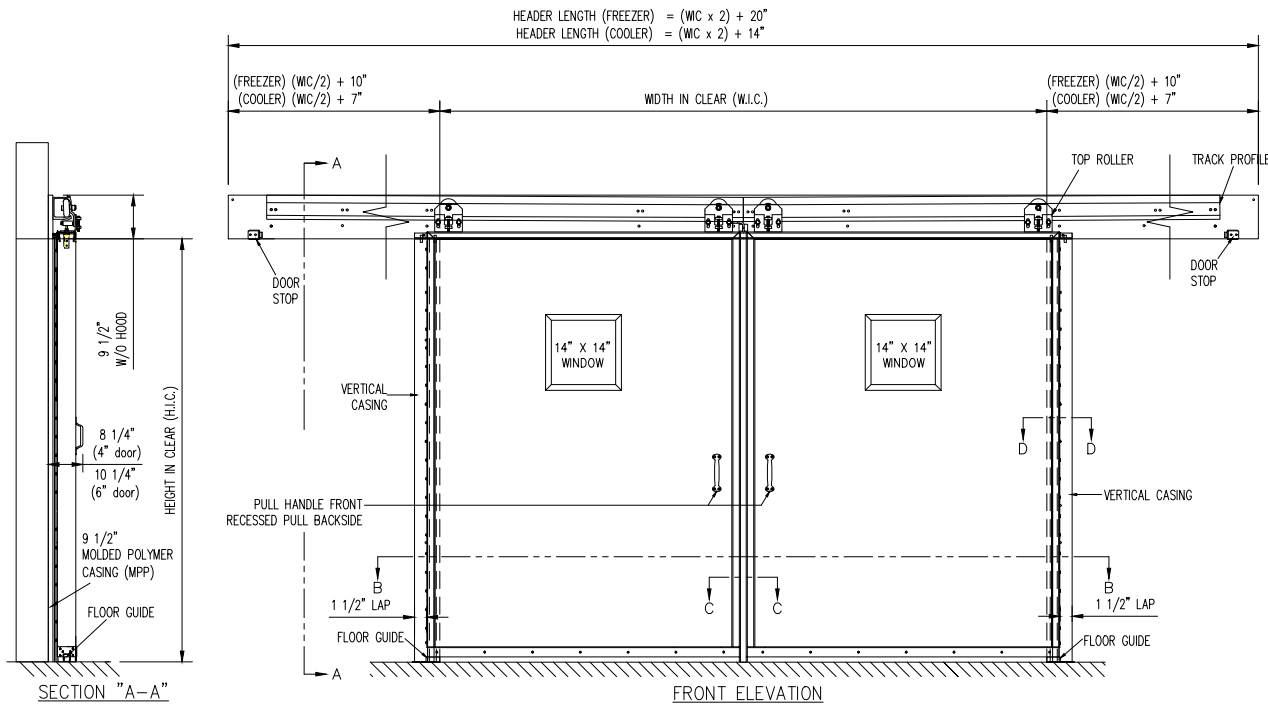
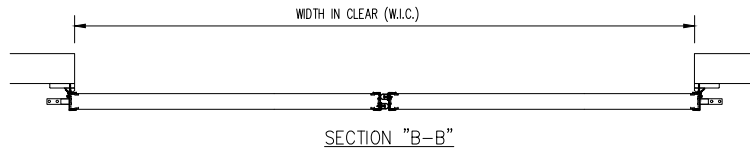
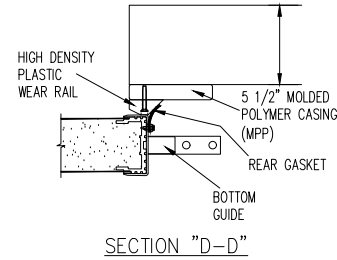
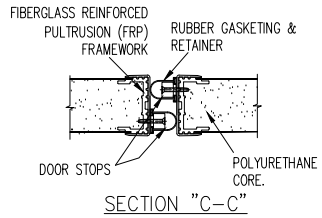
- |  |     |    |
|--|-----|----|
| 1. IS THIS DOOR ON A BOX GREATER THAN 3000 SQ FEET?  | YES | NO |
| 2. IF NO, IS BOX LOCATED IN COLD STORAGE FACILITY/ATMOSPHERE WITH FLOOR AREA 3000 SQ FEET OR LARGER? (A/C IS NOT COLD STORAGE) | YES | NO |
| 3. DOES THIS APPLICATION INVOLVE MEDICAL, SCIENTIFIC, OR RESEARCH FACILITIES?  | YES | NO |

**SPECIAL INSTRUCTIONS TO MANUFACTURER:**



JOB		CUSTOMER NO:		NO. PRINTS	FOR	DATE	REVISED	
		ORDER NO:						
	SOLD TO		DRAWN BY:					
			SHEET	OF				

# MANUAL BI-PARTING SLIDE DOOR (EXTREME HEAVY DUTY)



# HERCULES

JOB		CUSTOMER NO:		NO. PRINTS	FOR	DATE	REVISED
		ORDER NO:					
SOLD TO		DRAWN BY:					
		SHEET OF					