

ELECTRIC BI-PARTING SLIDE DOOR with 1900-RLSM OPERATOR

TYPE & THICKNESS OF DOOR:

COOLER FREEZER 4" THICK 6" THICK

OPENING SIZE:

FINISHED OPENING WIDTH (W.I.C.):
 FINISHED OPENING HEIGHT (H.I.C.): WALL THICKNESS:

ENTER ROOM TEMPERATURES:

TEMPERATURE WALL SIDE: F (PLEASE PROVIDE)
 TEMPERATURE TRACK SIDE: F (PLEASE PROVIDE)

CLADDING - TRACK SIDE:

EMBOSSD WHITE GALVALUME	SMOOTH WHITE GALVALUME
EMBOSSD BLACK GALVALUME	SMOOTH GALVALUME
EMBOSSD GALVALUME	STAINLESS STEEL, #4 FINISH
EMBOSSD WHITE ALUMINUM	
EMBOSSD MILL ALUMINUM	
CUSTOM	

CLADDING - WALL SIDE:

EMBOSSD WHITE GALVALUME	SMOOTH WHITE GALVALUME
EMBOSSD BLACK GALVALUME	SMOOTH GALVALUME
EMBOSSD GALVALUME	STAINLESS STEEL, #4 FINISH
EMBOSSD WHITE ALUMINUM	
EMBOSSD MILL ALUMINUM	
CUSTOM	

VISION WINDOW:

HEATED NON-HEATED 14" x 14" 14" x 24"

KICK PLATE - TRACK SIDE:

1/16" DIAMOND PLATE	1/8" DIAMOND PLATE	STAINLESS STEEL
12" TALL 24" TALL	36" TALL 48" TALL	Other:

KICK PLATE - WALL SIDE:

1/16" DIAMOND PLATE	1/8" DIAMOND PLATE	STAINLESS STEEL
12" TALL 24" TALL	36" TALL 48" TALL	Other:

CASINGS AND HEADER:

TRACK SIDE:
 MOLDED PLASTIC POLYMER (MPP)(STD) METAL CLAD MPP

MIRROR SIDE (OPTIONAL):
 MOLDED PLASTIC POLYMER (MPP) METAL CLAD MPP

THRU WALL (OPTIONAL):
 MOLDED PLASTIC POLYMER (MPP) METAL CLAD MPP
 1" CAREFREE 1.5" CAREFREE

HEAVY DUTY OPERATOR:

1900-RLSM, NEMA 1 CONTROL, STANDARD MOTOR/REDUCER PACKAGE
 1900-RLSM, NEMA 4 CONTROL, STANDARD MOTOR/REDUCER PACKAGE

VOLTAGE:
 208/3/60 230/3/60 460/3/60

CONTROLS:
 STEP CONTROL (PULL TO OPEN, PULL TO CLOSE)

SAFETY DEVICES:
 ELECTRIC REVERSING EDGE (STANDARD)

ACTUATION:
 PULL CORD ON BOTH SIDES
 NOTE: HEATED PULL CORD STANDARD FOR FREEZER DOORS.
 BY OTHERS

ADDITIONAL OPTIONS:

OUT BOARD ROLLERS
 HASP LOCK WITH ELECTRICAL INTERLOCK, TRACK SIDE
 TRACK HOOD STAINLESS POWDER COATED
 ELEVATED COOLER/FREEZER FLOOR FLOOR THICKNESS:
 JAMB WALL CAPS, NO INSERTS JAMB WALL CAPS WITH INSERTS
 OUTER WIDTH: OUTER HEIGHT: INSET:

- 1) Lead times begin once all full and final details of drawings are approved.
- 2) All full and final details need approved within 5 business days to secure the quoted lead time. If not received within 5 business days, a new lead time will be provided once the final drawings are approved.



JOB		CUSTOMER NO:		NO. PRINTS	FOR	DATE	REVISED	
		ORDER NO:						
	SOLD TO		DRAWN BY:					
			SHEET	OF				

ELECTRIC BI-PARTING SLIDE DOOR with 1900-RLSM OPERATOR

WICKET DOOR OPTIONS

SIZING:	HANDING:	LEAF:
WIDTH:	HINGED ON LEFT	LEFT LEAF
HEIGHT:	HINGED ON RIGHT	RIGHT LEAF

HINGE DETAILS:
 STANDARD CHROME STANDARD WHITE
 STAINLESS STEEL
 HINGE QTY:

PULL SIDE LATCH DETAILS:	
CHROME K-56 W/ PADLOCKING	CHROME K-56 W/ KEY LOCK
SOFT TOUCH W/ PADLOCKING	SOFT TOUCH W/ KEY LOCK
STAINLESS W/ PADLOCKING	STAINLESS W/ KEY LOCK
WHITE K-56 W/ PADLOCKING	WHITE K-56 W/ KEY LOCK

PUSH SIDE LATCH DETAILS:
 RECESSED INSIDE RELEASE

CLOSER:
 STD CLOSER
 HEAVY DUTY CLOSER
 HEAVY DUTY CLOSER, SS

APPLICATION (REQUIRED):

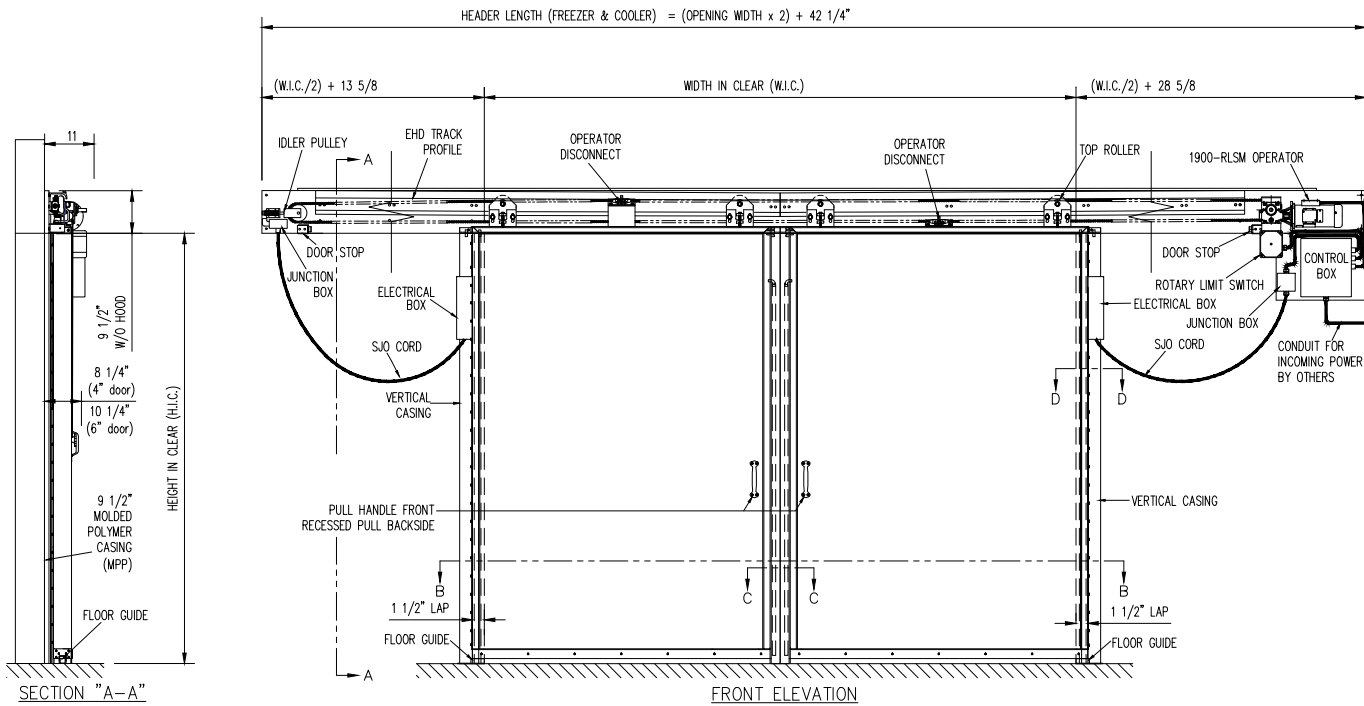
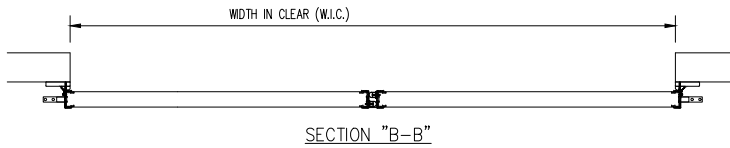
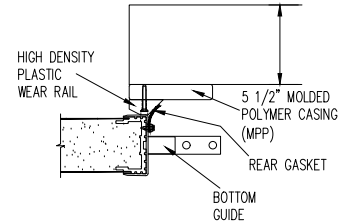
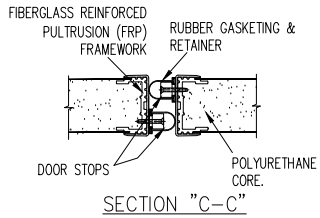
- | | | | |
|----|---|-----|----|
| 1. | IS THIS DOOR ON A BOX GREATER THAN 3000 SQ FEET? | YES | NO |
| 2. | IF NO, IS BOX LOCATED IN COLD STORAGE FACILITY/ATMOSPHERE WITH FLOOR AREA 3000 SQ FEET OR LARGER? (A/C IS NOT COLD STORAGE) | YES | NO |
| 3. | DOES THIS APPLICATION INVOLVE MEDICAL, SCIENTIFIC, OR RESEARCH FACILITIES? | YES | NO |

SPECIAL INSTRUCTIONS TO MANUFACTURER:



JOB		CUSTOMER NO:		NO. PRINTS	FOR	DATE	REVISED	
		ORDER NO:						
	SOLD TO		DRAWN BY:					
			SHEET	OF				

ELECTRIC BI-PARTING SLIDE DOOR with 1900-RLSM OPERATOR



© CENTER PARTING

 SLIDE PLAN

HERCULES

JOB		CUSTOMER NO:		NO. PRINTS	FOR	DATE	REVISED
		ORDER NO:					
		DRAWN BY:					
	SOLD TO		SHEET	OF			