

# ELECTRIC BI-PARTING SLIDE DOOR with 1900-RLS OPERATOR

**TYPE & THICKNESS OF DOOR:**

COOLER                      FREEZER                      4" THICK                      6" THICK

**OPENING SIZE:**

FINISHED OPENING WIDTH (W.I.C.):  
FINISHED OPENING HEIGHT (H.I.C.):                      WALL THICKNESS:

**ENTER ROOM TEMPERATURES:**

TEMPERATURE WALL SIDE:                      F (PLEASE PROVIDE)  
TEMPERATURE TRACK SIDE:                      F (PLEASE PROVIDE)

**CLADDING - TRACK SIDE:**

EMBOSSD WHITE GALVALUME	SMOOTH WHITE GALVALUME
EMBOSSD BLACK GALVALUME	SMOOTH GALVALUME
EMBOSSD GALVALUME	STAINLESS STEEL, #4 FINISH
EMBOSSD WHITE ALUMINUM	
EMBOSSD MILL ALUMINUM	
CUSTOM	

**CLADDING - WALL SIDE:**

EMBOSSD WHITE GALVALUME	SMOOTH WHITE GALVALUME
EMBOSSD BLACK GALVALUME	SMOOTH GALVALUME
EMBOSSD GALVALUME	STAINLESS STEEL, #4 FINISH
EMBOSSD WHITE ALUMINUM	
EMBOSSD MILL ALUMINUM	
CUSTOM	

**VISION WINDOW:**

HEATED                      NON-HEATED                      14" x 14"                      14" x 24"

**KICK PLATE - TRACK SIDE:**

1/16" DIAMOND PLATE	1/8" DIAMOND PLATE	STAINLESS STEEL
12" TALL                      24" TALL	36" TALL                      48" TALL	Other:

**KICK PLATE - WALL SIDE:**

1/16" DIAMOND PLATE	1/8" DIAMOND PLATE	STAINLESS STEEL
12" TALL                      24" TALL	36" TALL                      48" TALL	Other:

**CASINGS AND HEADER:**

**TRACK SIDE:**

MOLDED PLASTIC POLYMER (MPP)(STD)                      METAL CLAD MPP

**MIRROR SIDE (OPTIONAL):**

MOLDED PLASTIC POLYMER (MPP)                      METAL CLAD MPP

**THRU WALL (OPTIONAL):**

MOLDED PLASTIC POLYMER (MPP)                      METAL CLAD MPP  
1" CAREFREE                      1.5" CAREFREE

**VARIABLE SPEED, HEAVY DUTY OPERATOR:**

1900-RLS, NEMA 4 CONTROL, STANDARD MOTOR/REDUCER PACKAGE  
1900-RLS, NEMA 4 CONTROL, WASH DOWN MOTOR/REDUCER PACKAGE

**VOLTAGE:**

120/1/60                      240/1/60

**CONTROLS:**

STEP CONTROL (PULL TO OPEN, PULL TO CLOSE)  
TIMER TO CLOSE (PULL TO OPEN, TIME DELAY TO CLOSE)  
3-BUTTON CONTROL (OPEN, CLOSE, STOP)

**SAFETY DEVICES:**

SINGLE SAFETY BEAM  
DUAL SAFETY BEAMS  
PRESENCE SENSOR                      QTY:

**ACTUATION:**

PULL CORD ON BOTH SIDES  
NOTE: HEATED PULL CORD STANDARD FOR FREEZER DOORS.  
3-BUTTON STATION, NEMA 1                      QTY:  
3-BUTTON STATION, NEMA 4                      QTY:  
RADIO TRANSMITTER AND RECEIVER                      QTY:  
MOTION SENSOR                      QTY:  
BY OTHERS

**ADDITIONAL OPTIONS:**

OUT BOARD ROLLERS  
HASP LOCK WITH ELECTRICAL INTERLOCK, TRACK SIDE  
TRACK HOOD                      STAINLESS                      POWDER COATED  
ELEVATED COOLER/FREEZER FLOOR                      FLOOR THICKNESS:  
JAMB WALL CAPS, NO INSERTS                      JAMB WALL CAPS WITH INSERTS  
OUTER WIDTH:                      OUTER HEIGHT:                      INSET:

- 1) Lead times begin once all full and final details of drawings are approved.
- 2) All full and final details need approved within 5 business days to secure the quoted lead time. If not received within 5 business days, a new lead time will be provided once the final drawings are approved.



JOB		CUSTOMER NO:		NO. PRINTS	FOR	DATE	REVISED	
		ORDER NO:						
	SOLD TO		DRAWN BY:					
			SHEET	OF				

# ELECTRIC BI-PARTING SLIDE DOOR with 1900-RLS OPERATOR

**WICKET DOOR OPTIONS**

<b>SIZING:</b>	<b>HANDING:</b>	<b>LEAF:</b>
WIDTH:	HINGED ON LEFT	LEFT LEAF
HEIGHT:	HINGED ON RIGHT	RIGHT LEAF

**HINGE DETAILS:**  
 STANDARD CHROME          STANDARD WHITE  
 STAINLESS STEEL  
 HINGE QTY:

**PULL SIDE LATCH DETAILS:**

CHROME K-56 W/ PADLOCKING	CHROME K-56 W/ KEY LOCK
SOFT TOUCH W/ PADLOCKING	SOFT TOUCH W/ KEY LOCK
STAINLESS W/ PADLOCKING	STAINLESS W/ KEY LOCK
WHITE K-56 W/ PADLOCKING	WHITE K-56 W/ KEY LOCK

**PUSH SIDE LATCH DETAILS:**  
 RECESSED INSIDE RELEASE

**CLOSER:**  
 STD CLOSER  
 HEAVY DUTY CLOSER  
 HEAVY DUTY CLOSER, SS

**APPLICATION (REQUIRED):**

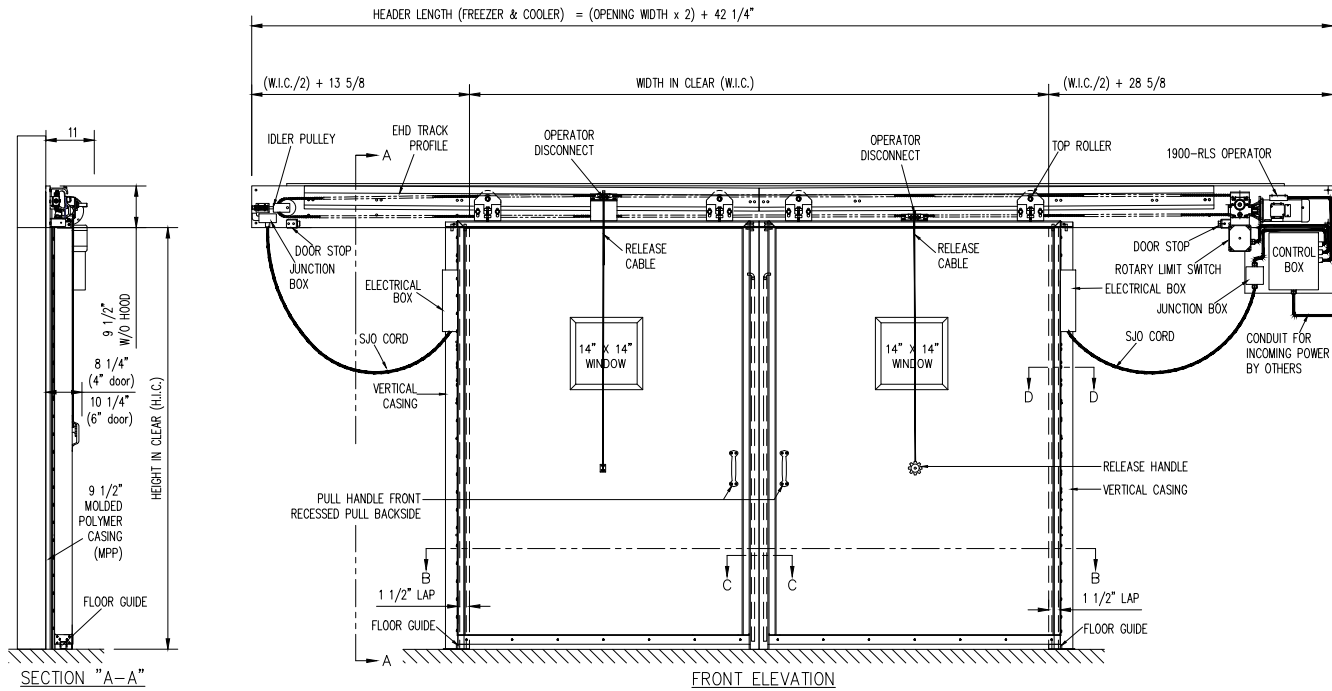
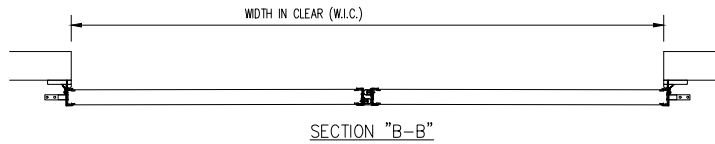
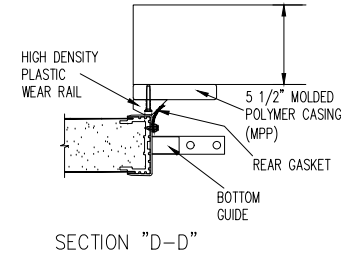
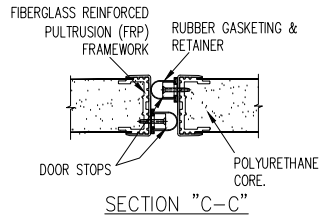
- |    |   |     |    |
|----|---|-----|----|
| 1. | IS THIS DOOR ON A BOX GREATER THAN 3000 SQ FEET?  | YES | NO |
| 2. | IF NO, IS BOX LOCATED IN COLD STORAGE FACILITY/ATMOSPHERE WITH FLOOR AREA 3000 SQ FEET OR LARGER? (A/C IS NOT COLD STORAGE) | YES | NO |
| 3. | DOES THIS APPLICATION INVOLVE MEDICAL, SCIENTIFIC, OR RESEARCH FACILITIES?  | YES | NO |

**SPECIAL INSTRUCTIONS TO MANUFACTURER:**



JOB		CUSTOMER NO:		NO. PRINTS	FOR	DATE	REVISED
		ORDER NO:					
		DRAWN BY:					
	SOLD TO		SHEET	OF			

# ELECTRIC BI-PARTING SLIDE DOOR with 1900-RLS OPERATOR



© CENTER PARTING
   
 SLIDE PLAN

# HERCULES

JOB		CUSTOMER NO:		NO. PRINTS	FOR	DATE	REVISED
		ORDER NO:					
SOLD TO		DRAWN BY:					
		SHEET	OF				