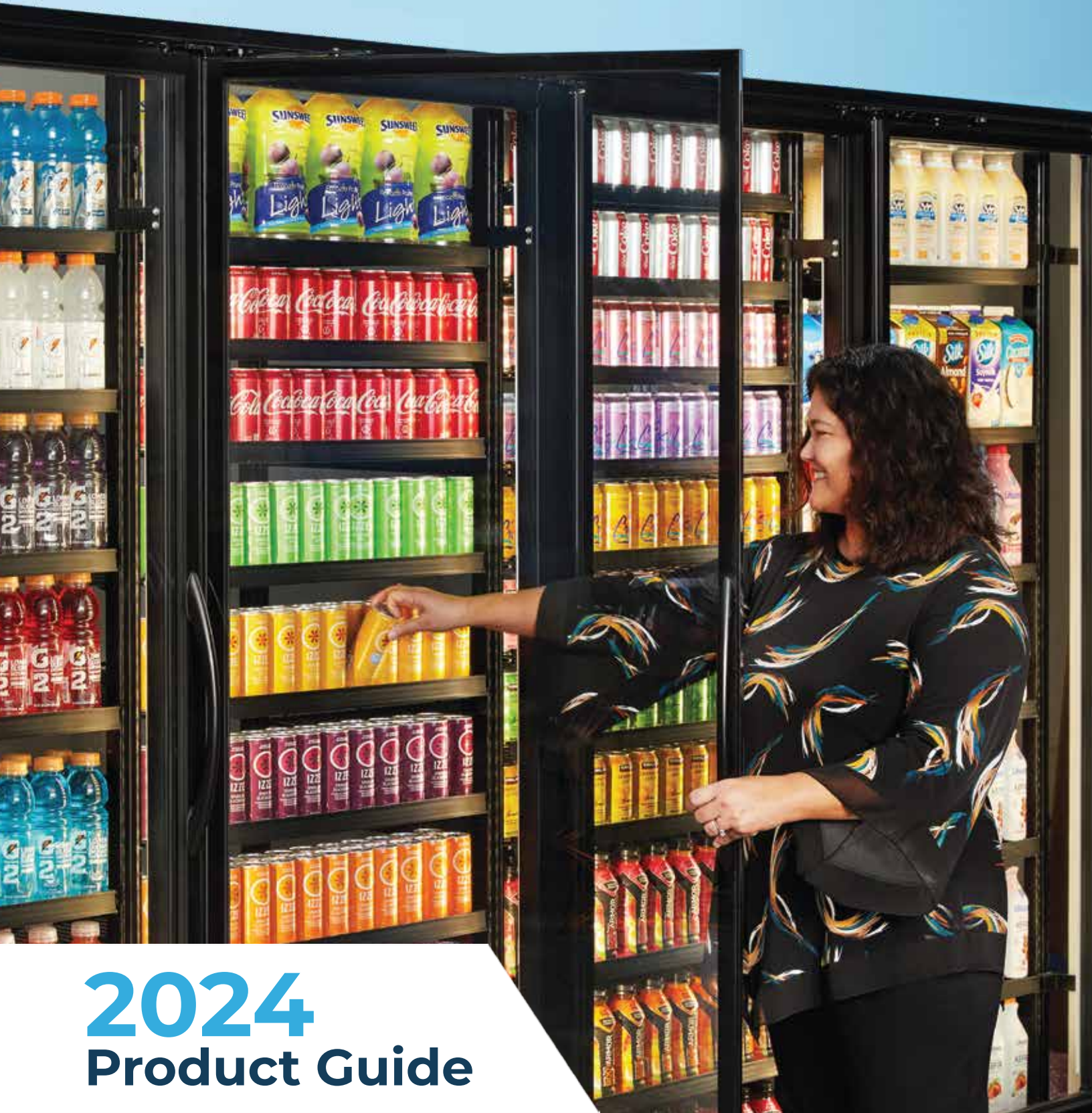




THERMOSEAL®

A SENNECA COMPANY



2024 Product Guide

INDUSTRY LEADING INSULATED GLASS DOOR MERCHANDISING SYSTEMS

Thermoseal[®] Means Value

In our 65th year as a trusted name in Glass Door Systems, we are guided by one fundamental pledge: Provide value through customer-focused communication, mutually beneficial economics, and by continuing our founding ambition to build a better glass door merchandising system. Our focus on customer satisfaction and ease of doing business have led to outstanding relationships with exceptional customers and suppliers. And of course, our extraordinary DOE compliant cooler and freezer glass doors and merchandising systems that are built for superior viewing and performance.

Today, you can feel the Thermoseal[®] difference in everything we do, from how we treat each other, to our product details, including our:

- Best in class Thermoseal **Pureview** LED lighting.
- Widely compatible for replacement of full door & frame systems and components
- Smart insulated frame design reduces condensation and energy consumption





Bud Light

BUD LIGHT

BUD LIGHT

BUD LIGHT

BUD LIGHT

BUD LIGHT

BUD LIGHT

SHOCK TO

SHOCK TO

Bud Light

Bud Light

BUD LIGHT

BUD LIGHT

BUD LIGHT

MARDI GRAS SHINER

ELYSIAN

Shiner

Shiner

BLONDE

12 12 FL. OZ. BOTTLES

Hops. Barley. Water. Rice.

8 12 FL. OZ. BOTTLES

BUD LIGHT

BUD LIGHT

BUD LIGHT

24 12 FL. OZ. BOTTLES

Hops. Barley. Water. Rice.

30 12 FL. OZ. BOTTLES

BUD LIGHT

THERMOCLEAR

FULL VIEW ALL-GLASS REACH-IN DOOR SYSTEM

FEATURES

- All-glass door design for the ultimate merchandise viewing experience
- Superior thermal performance
- Robust insulated frame design reduces condensation and energy consumption
- DOE Compliant
- Leading aftermarket replacement door, utilizes the same Net Clear Openings, door dimensions & shelving hook points offering component level and full system replacement compatibility
- Industry's best next generation LED
- 3-pane, gas filled glass pack
- Hold open allows easy access for stocking and grabbing merchandise
- Our door stop feature prevents damage to other doors and shoppers
- Occupancy sensor
- Matching pass-thru beer cave entry doors

See chart for options



3-PANE GLASS PACK

The 3-Pane Glass Pack is raising the bar for insulation and efficiency.



SUPERIOR CONDENSATION PREVENTION AND
**ALL-GLASS VIEWING AREA FOR
EXCEPTIONAL MERCHANDISING**



THERMOSEAL 1400

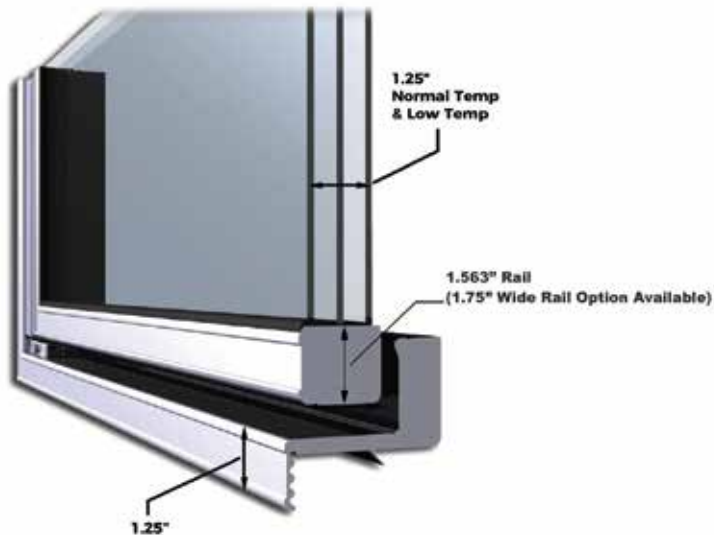
ALUMINUM SWING DOOR SYSTEM

The Thermoseal 1400 provides a superior visual product display in a sleek design for a superior customer experience. Designed for easy installation and service and feature quick connect pre-wired lighting and interconnecting frame sections.

The 1400 is our most trusted design, providing exceptional thermal protection and durability. It checks all the boxes for your new aluminum swing door systems or as a replacement for your existing glass doors.

FEATURES

- Energy efficient 3-pane glass pack
- Quick connect pre-wired lighting
- Widely compatible for replacement of full-systems and components (Net Clear Openings, door dimensions & shelving hook points)
- Best in class Thermoseal Pureview LEDs
- Available in narrow, wide and flat rail



EXCEPTIONAL THERMAL PROTECTION AND DURABILITY

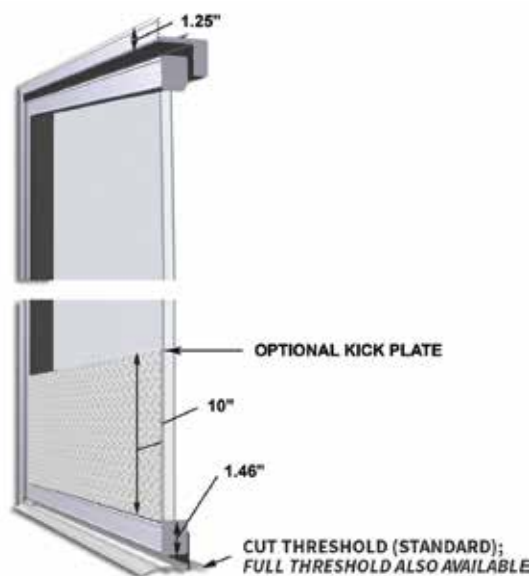


1403 PASS-THRU

Thermoseal glass doors provide technology, premium materials and design features to meet the demanding requirements of supermarket, restaurant and convenient store industries. Thermoseal 1403 Walk-In Entry Doors are built to match reach-in door lineups and allow easy access to your walk-in space. All Thermoseal Glass Walk-In Entry doors are assembled with sturdy aluminum perimeter frames with heaters and include standard features such as hold open door stops, adjustable vinyl wiper seals, frame threshold, EZ Torque and Thermoseal LED lighting. Other options are available.

FEATURES

- Available matching **Stationary Panel**
- Allow easy access to your walk-in cooler
- All glass, 1/3 or 2/3 fitted glass available in the colors of black and white
- Door stop hold-open feature
- Adjustable vinyl wiper seals
- Available Roll-A-Way shelving cart



BEER CAVES



ClearCool®



Thermoseal's ClearCool® high-traffic swing door or slide doors provide lasting thermal performance and a superior visual experience. Our patented designed models are constructed with fewer parts, use less energy, and are widely compatible making them trusted choices for new or retrofit beverage or deli case applications.

- Fully welded, energy efficient PVC extrusions
- Swing or slide door beverage & deli cases
- Self-closing and manual close options
- Cooler and freezer standard units available or designed to specific requirements



PolarView Viewing Windows

Low Temp / Medium Temp

Thermoseal's PolarView telescoping viewing windows are an indispensable element in establishing an environment conducive to showing products. Boasting stylish and sophisticated frame surfaces, these windows offer an aesthetically pleasing display that is sure to draw attention and elevate interest in products.

Ideal for walk-in coolers and freezers, such as beer caves or food prep areas, these windows are DOE compliant and offer increased visibility for viewing displays.

SPECS:

Standard Glass: 2 or 3 pane, non-heated or heated (depending on conditions), with 1" or 1.875" thick glass unit. Window comes standard with no electric requirement. For extreme conditions, optional custom heated glass is available.

Rail: Wide Rail (3-1/16" face) aluminum frame, simulating "door and frame" look.

Frame: Factory assembled sealed glass unit on the main frame using a telescoping rear sub-frame to sandwich various wall thicknesses, within limitations. Individual panel installation is required for each net opening. Multiple window installations require the use of 2" (or 1 1/2") wide joining boards between each viewing window.

TELESCOPING WINDOWS:

Telescopic windows exemplify a superior level of engineering compared to conventional windows. The intricate design of these windows allows smaller panels within the framed opening to nest in front or behind successive panels, maximizing space efficiency.

This innovative design enables viewing windows that can be installed in smaller areas and tighter openings, without compromising on the standard opening size.



AVAILABLE FINISH OPTIONS:



Satin Anodized
Aluminum



Black Powder
Coat



Bright Dip
Clear

SPECS

Thermoclear

MEDIUM TEMP

3-Pane Glass Pack, 75°F, 55% RH
Ambient / 35°F Walk-In

MEDIUM TEMP - HIGH HUMIDITY

3-Pane Glass Pack, 75°F, 65% RH
Ambient / 35°F Walk-In

LOW TEMP

3-Pane Glass Pack, 75°F, 55% RH
Ambient / -15°F Walk-In

LOW TEMP - HIGH HUMIDITY

3-Pane Glass Pack, 75°F, 65% RH
Ambient / -15°F Walk-In

24" W x 67" H	24" W x 75" H
26" W x 67" H	26" W x 75" H
30" W x 67" H	28" W x 75" H
30" W x 75" H	26" W x 79" H
36" W x 75" H	28" W x 79" H
24" W x 79" H	30" W x 79" H

This door is designed and certified for use in walk-in cooler and freezer applications. The models and energy consumption rates listed below are a sample of the models certified as compliant with DOE standards and offered for sale. Energy consumption varies by model, and ranges from 0.89 kWh/day to 13.31 kWh/day.

MODEL	ENERGY CONSUMPTION:
1400T-E2-MT-3075-1D	1.09 kWh/day
1400T-E2-MT-3075-2D	1.75 kWh/day
1400T-E2-MT-3075-3D	2.4 kWh/day
1400T-E2-MT-3075-4D	3.06 kWh/day
1400T-E2-MT-3075-5D	3.71 kWh/day
1400T-E2-LT-3075-1D	2.85 kWh/day
1400T-E2-LT-3075-2D	5.31 kWh/day
1400T-E2-LT-3075-3D	7.76 kWh/day
1400T-E2-LT-3075-4D	10.21 kWh/day
1400T-E2-LT-3075-5D	12.68 kWh/day

1400

Thermoseal 1400 doors are designed and certified for use in walk-in cooler and freezer applications. The Energy Consumption rates per Model (below) are based on samples of models that are compliant with DOE standards and offered for sale. Energy consumption varies by model, and ranges from 1.02 kWh/day to 13.31 kWh/day.

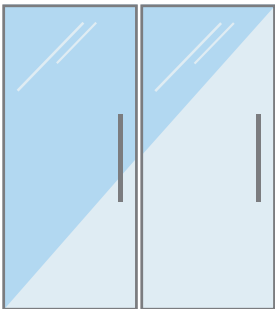
Available: Medium Temp, Medium Temp High-Humidity, Low Temp, Low Temp High-Humidity.

MODEL	ENERGY CONSUMPTION:
1400T-N-MT-3075-1D	1.09 kWh/day
1400T-N-MT-3075-2D	1.75 kWh/day
1400T-N-MT-3075-3D	2.40 kWh/day
1400T-N-MT-3075-4D	3.06 kWh/day
1400T-N-MT-3075-5D	3.71 kWh/day
1400T-N-LT-3075-1D	2.85 kWh/day
1400T-N-LT-3075-2D	5.31 kWh/day
1400T-N-LT-3075-3D	7.76 kWh/day
1400T-N-LT-3075-4D	10.21 kWh/day
1400T-N-LT-3075-5D	12.68 kWh/day

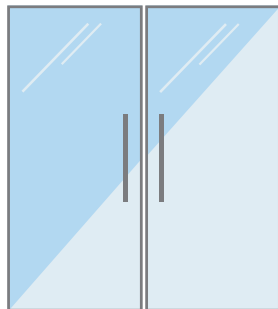
1403

This door is designed and certified for use in walk-in cooler applications. The models and energy consumption rates listed below are a sample of the models certified as compliant with DOE standards and offered for sale. Energy consumption varies by model, and ranges from 1.10 kWh/day to 2.02 kWh/day.

MODEL	ENERGY CONSUMPTION:
1403-E-MT-3080-1D.....	1.68 kWh/day
1403-E-MT-3680-1D.....	1.77 kWh/day
1403-E2-MT-3080-1D.....	1.68 kWh/day
1403-E2-MT-3680-1D.....	1.77 kWh/day
1403-N-MT-3080-1D.....	1.68 kWh/day
1403-N-MT-3680-1D.....	1.77 kWh/day
1403-W-MT-3080-1D.....	1.68 kWh/day
1403-W-MT-3680-1D.....	1.77 kWh/day



Standard Swing



French Swing



Handles, Parts, Carts & Shelves

STANDARD SLIMLINE HANDLES

Available in black and polished silver.

ELLIPTICAL HANDLES

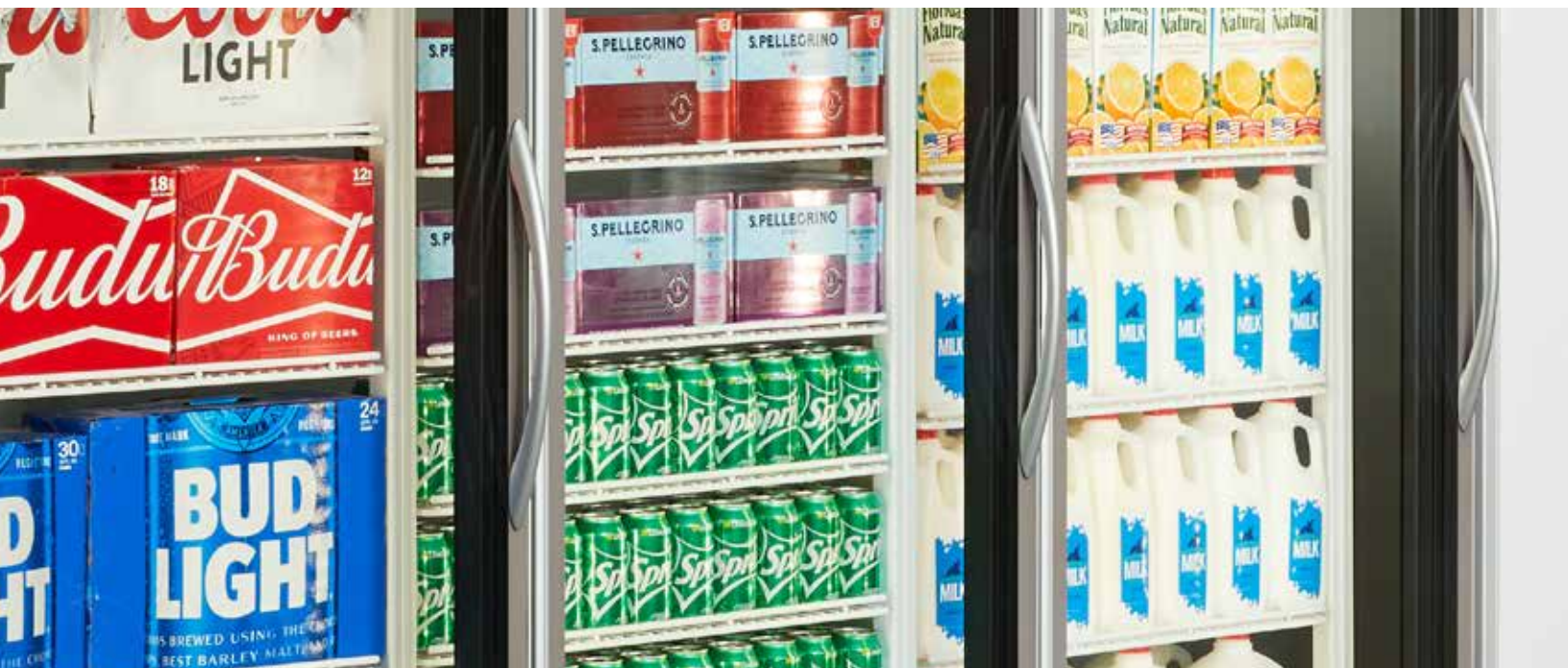
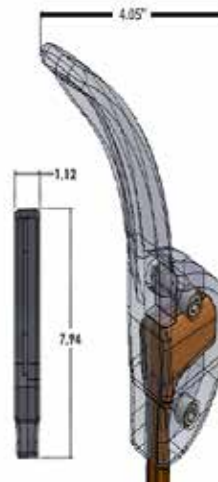
Available in black, satin silver, and black anti-microbial. Note: Additional handles available for replacement to match existing products - contact factory for specifics.

STANDARD DOOR RAILS

Available in satin silver and black. Note: Additional rails are available to match existing glass doors - contact factory for information.

FOREARM PULL

The Thermoseal Forearm Pull attachment allows for a hands-free operation and installs on most existing handles.





ROLL-A-WAY CART

All Thermoseal shelving kits are available as part of a Roll-A-Way Cart. Roll-A-Way Carts are available in a variety of sizes and in white or black finishes.

- Gravity flow
- Flat
- Front product stop

STANDARD SHELVING: DOORS LESS THAN 79"

Five shelves, shelf depth options include 24", 27", 36" and 42". Door width options include 24", 26", 28" and 30".

Note: Seven shelves included with all 79" doors.

GRAVITY FLOW SHELVING:

Shelf depth options include 24", 27", 36" and 42". Door width options include 24", 26", 28" and 30".

DOUBLE WIDE SHELVING

Shelf depth options include 27" and 36". Door width options include 24", 26", 28" and 30".

- Roller mats
- Glide sheets
- Product stops



LIGHTING

Industry best Pureview LED's are designed for commercial markets where light saturation levels, color temperatures, and optimum efficiency is required. The Thermoseal LED's offer a unique dimming driver and occupancy sensor technology.

PRODUCT HIGHLIGHTS

- Highest efficiency in the industry - 127 lumens-per-watt @ 11.5 (system Watts)
- Highest lumens on center in the industry - 2000 lm
- Best-in-class uniformity - 1.1:1
- 90 CRI, R9 68Min
- 11,000 L70
- VE Patented coined optic reflector for uniformity & heat management benefits
- Fully concealed LED emitters for exceptional visual comfort

CHANGES IN LED'S

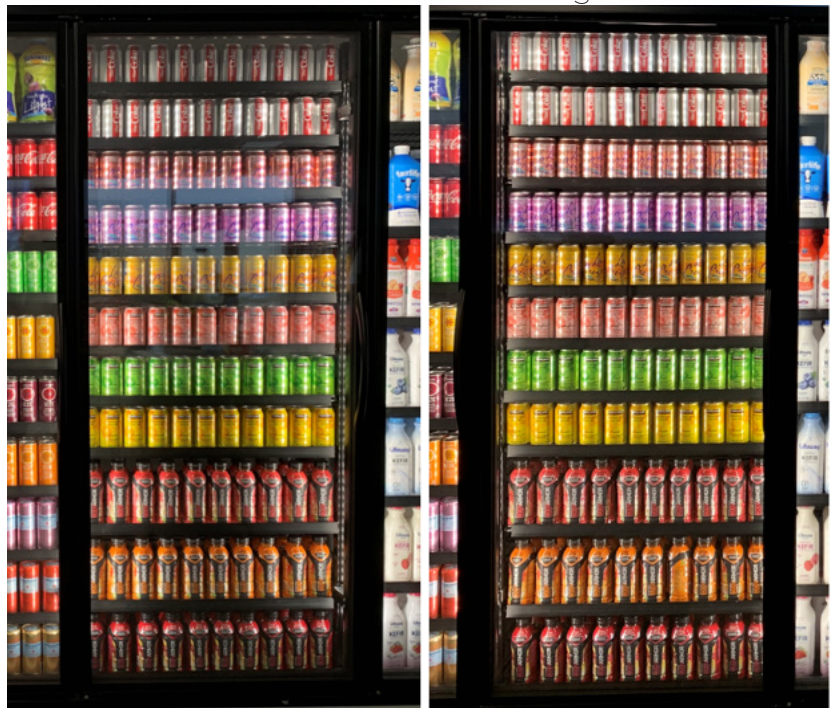
- Same brightness with half the power
- Reduced the number of drivers
- LED optics used as standard
- Secondary coin optic included
- 90 CRI with a R9 of 58 which means truer colors



Standard LED Vs. Full-Length LED

FULL-LENGTH PUREVIEW LED LIGHTING

- Standard length LED fixtures 68"-69"
- Full-length LED fixtures 73.5"



FEATURES AND BENEFITS

Input voltage	24VDC +/- .5VDC
Fixture wattages	9.1W end, 18.2W center (Standard 60")
CRI	80, 90
CCT	3500K, 4000K, 5000K
Operating temp	-20° - 104° F
Housing	Tri-Color Extruded Acrylic
L70 Life	100,000 Hours
Uniformity	1/1"1
Lumens Maintenance	L-70 of 100,000 L-85 > 60,000 hours desired L-90 > 36,000 hours for DLC premium status
Reflector	VE Patented Coined Optic
Reverse Polarity Protected	Yes
Dimming	0-10V Compatible
Certification	ETL, CETL
IP Rating	IP 65
Warranty	5 years

Made in U.S.A.

NET CLEAR OPENINGS - (w/Mullions)

Standard 1400/Thermoclear Full Flange Frame Net Openings (With Mullions)

NUMBER OF DOORS	NUMBER OF FRAMES	FRAME CONFIGURATION	CATALOG DOOR SIZE 24"		CATALOG DOOR SIZE 26"		CATALOG DOOR SIZE 28"		CATALOG DOOR SIZE 30"	
			IN FEET	MM	IN FEET	MM	IN FEET	MM	IN FEET	MM
1	1	1 FULL-FLANGE	2'-1 1/8"	638	2'-4 5/16"	719	2'-8 5/16"	770	2'-7 13/16"	808
2	1	2 FULL-FLANGE	4'-0 7/8"	1241	4'-7 1/4"	1403	4'-11 1/4"	1505	5'-2 1/4"	1581
3	1	3 FULL-FLANGE	6'-0 5/8"	1845	6'-10 3/16"	2088	7'-4 3/16"	2240	7'-8 11/16"	2354
4	1	4 FULL-FLANGE	8'-0 3/8"	2448	8'-1 1/8"	2772	8'-8 1/8"	2875	10'-3 1/8"	3127
5	1	5 FULL-FLANGE	10'-0 1/8"	3051	11'-4 1/16"	3456	12'-2 1/16"	3710	12'-8 9/16"	3900
6	2	3,3 L/R	12'-1"	3693	13'-8 1/8"	4189	14'-8 1/8"	4474	15'-5 1/8"	4702
7	2	3,4 L/R	14'-0 3/4"	4286	15'-1 1/16"	4853	17'-1 1/16"	5209	17'-11 9/16"	5475
8	2	4,4 L/R	16'-0 1/2"	4890	18'-2"	5537	19'-6"	5844	20'-6"	6248
9	2	4,5 L/R	18'-0 1/4"	5493	20'-4 15/16"	6221	21'-10 15/16"	6679	23'-0 7/16"	7022
10	2	5,5 L/R	20'-0"	6096	22'-7 7/8"	6906	24'-3 7/8"	7414	25'-6 7/8"	7785
11	3	4,3,4 L/C/R	22'-0 7/8"	6728	24'-1 15/16"	7618	26'-9 15/16"	8177	28'-2 7/16"	8596
12	3	4,4,4 L/C/R	24'-0 5/8"	7331	27'-2 7/8"	8303	29'-2 7/8"	8912	30'-8 7/8"	9369
13	3	4,4,5 L/C/R	26'-0 3/8"	7934	29'-5 13/16"	8987	31'-7 13/16"	9647	33'-3 5/16"	10143
14	3	4,5,5 L/C/R	28'-0 1/8"	8538	31'-8 3/4"	9671	34'-0 3/4"	10382	35'-8 3/4"	10918
15	3	5,5,5 L/C/R	29'-11 7/8"	9141	33'-11 11/16"	10355	36'-5 11/16"	11117	38'-4 3/16"	11689
16	4	4,4,4,4 L/C/C/R	32'-0 3/4"	9773	38'-3 3/4"	11088	38'-11 3/4"	11881	40'-11 3/4"	12480
17	4	5,4,3,5 L/C/C/R	34'-0 1/2"	10376	38'-6 11/16"	11752	41'-4 11/16"	12616	43'-6 3/16"	13264
18	4	6,6,5,3 L/C/C/R	36'-0 1/4"	10979	40'-9 6/8"	12436	43'-9 6/8"	13361	46'-0 6/8"	14037
19	4	5,5,5,4 L/C/C/R	38'-0"	11582	43'-0 9/16"	13121	46'-2 9/16"	14086	48'-7 1/16"	14810
20	4	5,5,5,5 L/C/C/R	39'-11 3/4"	12186	45'-3 1/2"	13805	48'-7 1/2"	14821	51'-1 1/2"	15583
21	5	5,5,3,3,5 L/C/C/C/R	42'-0 5/8"	12817	47'-7 9/16"	14518	51'-1 9/16"	15584	53'-9 1/16"	16385
22	5	5,4,4,4,5 L/C/C/C/R	44'-0 3/8"	13421	48'-10 1/2"	15202	53'-8 1/2"	16320	58'-3 1/2"	17158
23	5	5,5,3,5,5 L/C/C/C/R	46'-0 1/8"	14024	52'-1 7/16"	15886	55'-1 7/16"	17055	58'-9 15/16"	17931
24	5	5,5,4,5,5 L/C/C/C/R	47'-11 7/8"	14627	54'-4 3/8"	16570	58'-4 3/8"	17790	61'-4 3/8"	18704
25	5	5,5,5,5,5 L/C/C/C/R	48'-11 5/8"	15230	56'-7 5/16"	17255	60'-9 5/16"	18525	63'-10 13/16"	19477
26	6	5,5,5,3,3,5 L/C/C/C/C/R	52'-0 1/2"	15862	58'-11 3/8"	17967	63'-3 3/8"	18288	66'-6 3/8"	20279
27	6	6,6,4,4,4,6 L/C/C/C/C/R	64'-0 1/4"	18488	61'-2 5/16"	18852	66'-8 5/16"	20023	69'-0 13/16"	21062
28	6	5,5,5,4,4,5 L/C/C/C/C/R	56'-0"	17058	63'-5 1/4"	19336	68'-1 1/4"	20758	71'-7 1/4"	21825
29	8	6,6,6,6,4,6 L/C/C/C/C/R	67'-11 3/4"	17872	66'-8 3/16"	20020	70'-8 3/16"	21498	74'-1 11/16"	22698
30	8	6,6,6,6,6,6 L/C/C/C/C/R	69'-11 1/2"	18276	67'-11 1/8"	20704	72'-11 1/8"	22228	78'-8 1/8"	23371

NET CLEAR OPENINGS - B-Swing

Standard 1400/Thermoclear B-Swing Full Flange Frame Net Openings (No Mullions at Handles) 02/02/2023

NUMBER OF DOORS	NUMBER OF FRAMES	FRAME CONFIGURATION	CATALOG DOOR SIZE 24"		CATALOG DOOR SIZE 28"		CATALOG DOOR SIZE 28"		CATALOG DOOR SIZE 30"	
			IN FEET	MM	IN FEET	MM	IN FEET	MM	IN FEET	MM
1	1	1	2'-1 5/16"	643	2'-4 1/2"	724	2'-8 1/2"	775	2'-3"	813
2	1	2	4'-1 1/4"	1251	4'-7 5/8"	1413	4'-11 5/8"	1614	6'-2 5/8"	1691
3	1	3	6'-1 3/16"	1859	6'-10 3/4"	2102	7'-4 3/4"	2254	7'-9 1/4"	2369
4	1	4	8'-1 1/8"	2467	9'-1 7/8"	2791	9'-9 7/8"	2994	10'-3 7/8"	3146
5	1	5	10'-1 1/16"	3075	11'-5"	3480	12'-3"	3734	12'-10 1/2"	3924
6	2	2,4	12'-2 1/8"	3712	13'-9 1/4"	4197	14'-9 1/4"	4602	15'-6 1/4"	4731
7	2	3,4	14'-2 1/16"	4320	16'-0 3/8"	4886	17'-2 3/8"	5242	18'-10 7/8"	5509
8	2	4,4	16'-2"	4928	18'-3 1/2"	5575	19'-7 1/2"	5982	20'-7 1/2"	6287
9	2	4,5	18'-1 15/16"	5536	20'-6 5/8"	6264	22'-0 5/8"	6721	23'-2 1/8"	7064
10	3	2,4,4	20'-3"	6172	22'-10 7/8"	6962	24'-6 7/8"	7490	25'-9 7/8"	7871
11	3	4,3,4	22'-2 15/16"	6780	25'-2"	7671	27'-0"	8230	28'-4 1/2"	8649
12	3	4,4,4	24'-2 7/8"	7388	27'-5 1/8"	8360	29'-5 1/8"	8969	30'-11 1/8"	9427
13	3	4,4,5	26'-2 13/16"	7996	29'-8 1/4"	9049	31'-10 1/4"	9709	33'-5 3/4"	10204
14	4	2,4,4,4	28'-3 7/8"	8633	32'-0 1/2"	9766	34'-4 1/2"	10478	36'-1 1/2"	11011
15	4	3,4,4,4	30'-3 13/16"	9241	34'-3 5/8"	10455	36'-9 5/8"	11217	38'-8 1/8"	11789
16	4	4,4,4,4	32'-3 3/4"	9849	36'-6 3/4"	11144	39'-2 3/4"	11957	41'-2 3/4"	12567
17	4	4,4,4,5	34'-3 11/16"	10457	38'-9 7/8"	11833	41'-7 7/8"	12697	43'-9 3/8"	13345
18	5	2,4,4,4,4	36'-4 3/4"	11093	41'-2 1/8"	12551	44'-2 1/8"	13465	46'-5 1/8"	14151
19	5	3,4,4,4,4	38'-4 11/16"	11701	43'-5 1/4"	13240	46'-7 1/4"	14205	48'-11 3/4"	14929
20	5	4,4,4,4,4	40'-4 5/8"	12309	45'-6 3/8"	13929	49'-0 3/8"	14945	51'-6 3/8"	15707
21	5	4,4,4,4,5	42'-4 9/16"	12917	47'-11 1/2"	14618	51'-5 1/2"	15686	54'-1"	16485
22	6	2,4,4,4,4,4	44'-5 5/8"	13554	50'-3 3/4"	15305	53'-11 3/4"	16453	56'-8 3/4"	17291
23	6	2,4,4,4,4,4	46'-5 9/16"	14162	52'-6 7/8"	16024	56'-4 7/8"	17193	59'-3 3/8"	18069
24	6	4,4,4,4,4,4	48'-5 1/2"	14770	54'-10"	16713	58'-10"	17932	61'-10"	18847
25	6	4,4,4,4,4,5	50'-5 7/16"	15378	57'-1 1/8"	17402	61'-3 1/8"	18672	64'-4 5/8"	19625
26	7	2,4,4,4,4,4,4	52'-6 1/2"	16015	59'-5 3/8"	18120	63'-9 3/8"	19441	67'-0 3/8"	20431
27	7	3,4,4,4,4,4,4	54'-6 7/16"	16623	61'-6 1/2"	18809	66'-2 1/2"	20180	69'-7"	21209
28	7	4,4,4,4,4,4,4	56'-6 3/8"	17231	63'-11 5/8"	19498	68'-7 5/8"	20920	72'-1 5/8"	21987
29	7	4,4,4,4,4,5	58'-6 5/16"	17839	66'-2 3/4"	20187	71'-0 3/4"	21660	74'-3 1/4"	22765
30	8	4,4,4,4,4,4,4,2	60'-7 3/8"	18475	69'-7"	20904	73'-7"	22428	77'-4"	23571



— A SENNECA COMPANY —

THERMOSEAL
5350 FRYE ROAD, IRVING, TX 75061
WWW.THERMOSEAL.COM | 800.456.7788



SENNECA™

