



Installation Instructions Replacement Of LED Driver

PROTECTIVE GEAR NOTICE	
	<i>Protective Eyewear– Potential risk of eye injuries, protective eyewear required when performing this, and any other associated tasks.</i>
	<i>Protective Gloves– Potential risk of injury to your hands, protective gloves required when performing this, and any other associated tasks.</i>
	<i>Footwear Protective – Potential risk of injury to your feet, wearing protective footwear is required when performing this and any other associated tasks.</i>

Safety and Warnings



BEFORE YOU BEGIN

Read instructions completely and carefully.

WARNING: TO REDUCE THE RISK OF FIRE, ELECTRICAL SHOCK OR INJURY, OBSERVE THE FOLLOWING:

- 1) Use this unit in the manner intended by the manufacturer.
- 2) Before servicing or altering, switch power off.



For use inside a commercial refrigeration case with packaged foods only.

FOR YOUR SAFETY

Read and observe all CAUTIONS and WARNINGS shown throughout these instructions. While performing installations described; gloves, safety glasses or goggles should be worn.

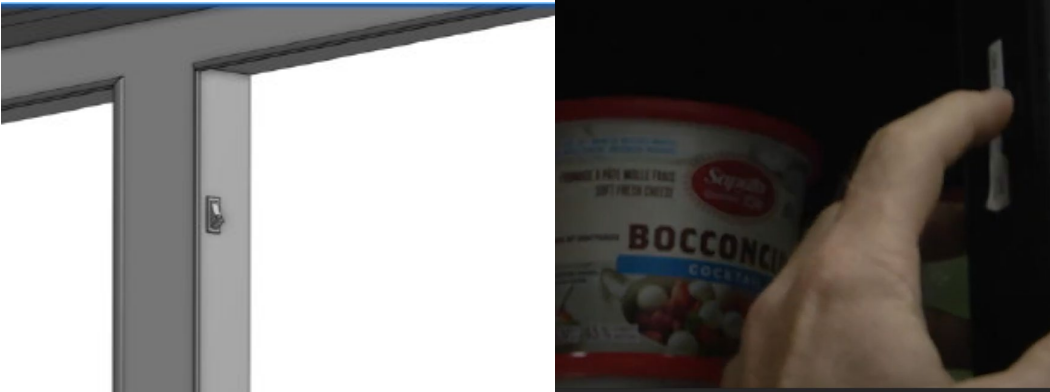


PREPARE ELECTRICAL WIRING

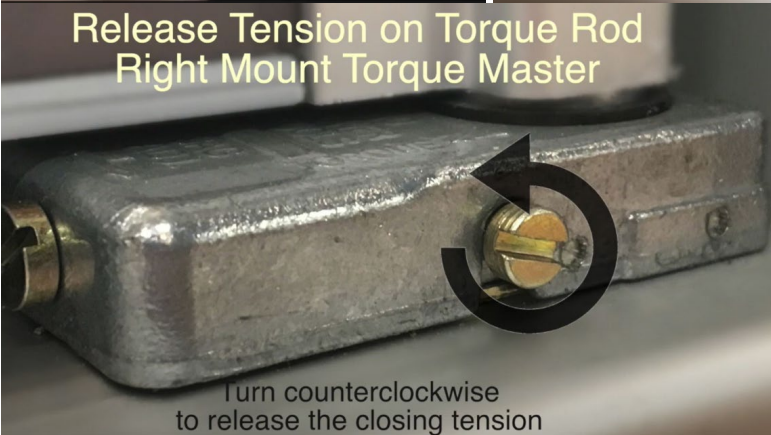
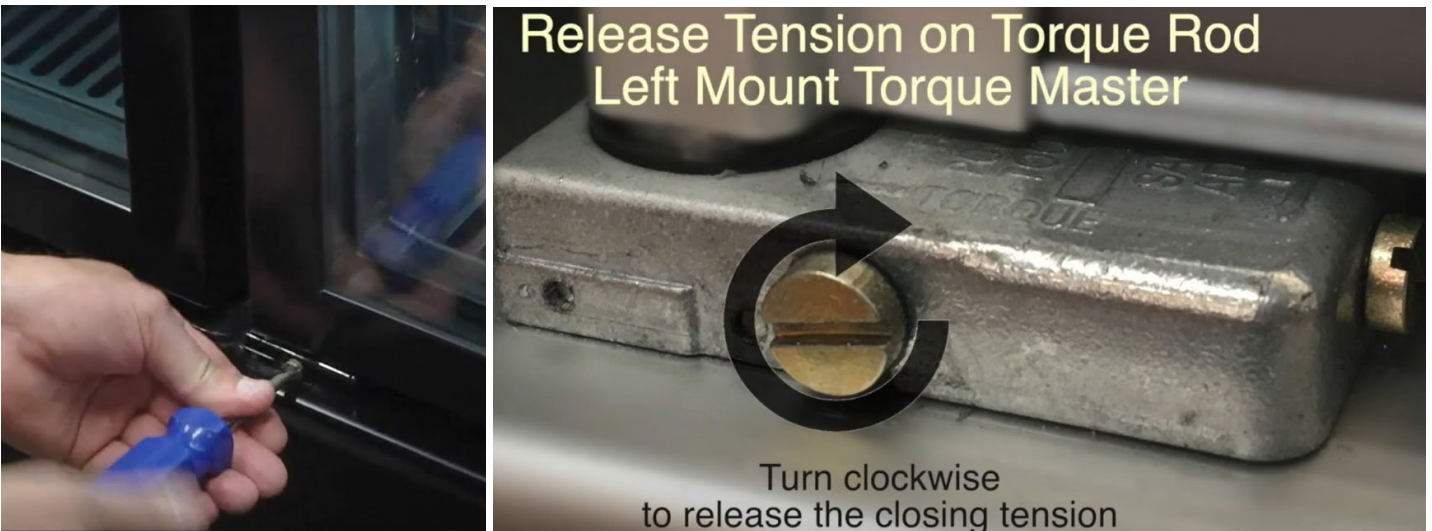
Electrical requirements

This appliance must be supplied with 120V, 60 Hz, and connected to an individual and properly grounded branch circuit, protected by a 15 or 20 ampere circuit breaker or time delay fuse.

STEP 1 Locate power switch on top right of the frame and shutoff AC power switch. Refer to page 9 for the location of the driver to proceed to STEP 2



STEP 2 Release the tension of the door by turning the torque master screw. Door will remain idle position once the tension has been fully released from the torque master.



STEP 3 Remove the screw from the hold open of the door attached to the top frame member. Re-install the screw back to the shoulder bolt.



STEP 4 Using a needle nose pliers or flat head screwdriver to push down the receptacle hinge pin clip to release the door from the top member of the frame.



STEP 5 Lift the door upwards to release the door from the torque master of the bottom member of the frame. Set the door aside safely location to reinstall later.



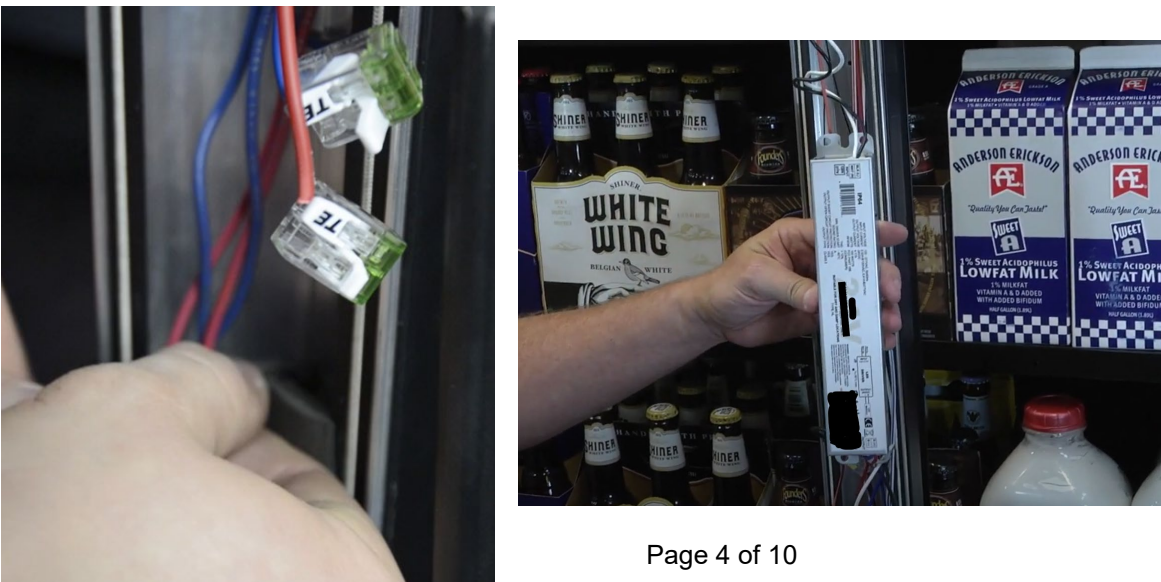
STEP 6 Using a small flat head screwdriver, remove the zipper strip strap from around the center of the frame.



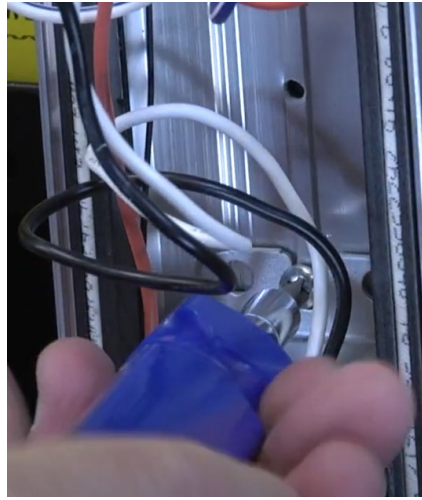
STEP 7 Remove the contact plate from the frame as shown.



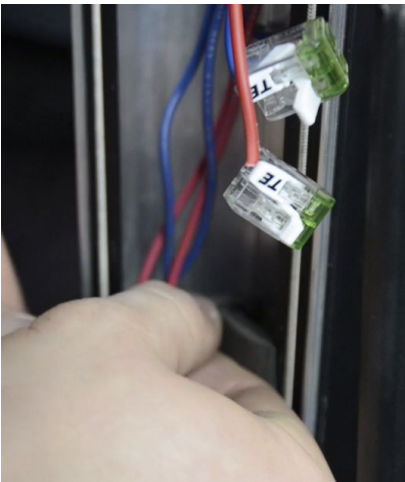
STEP 8 Disconnect all the wiring connectors from the driver. Remove the driver once the connectors are release from the wires.



STEP 9 Align the new driver to the holes from the old driver. Using the existing screws to attach the new driver.



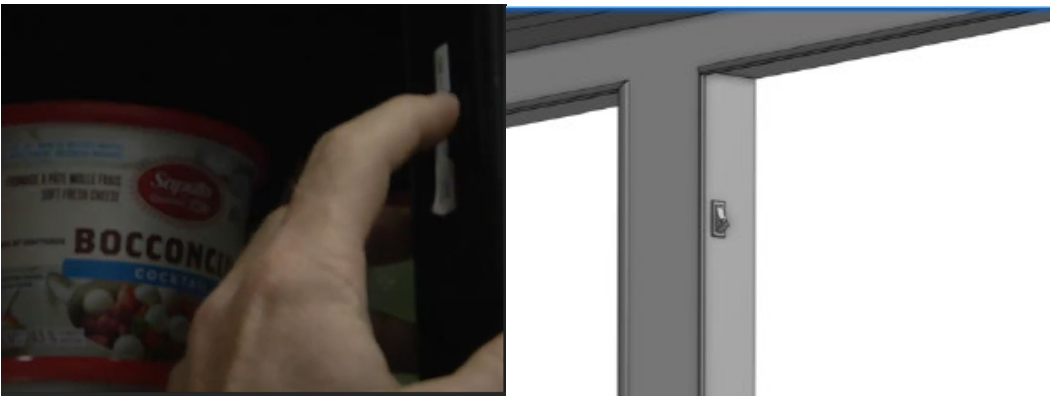
STEP 10 Reconnect all the wiring connectors from the old driver to the new driver.



STEP 11 Make sure all the wires are recessed into the mullion to prevent the contact plate from bulging out and make it easy to install the zipper strips strap.



STEP 12 Turn the power switch up to turn the lights on.



STEP 13 Reinstall the contact plates. Flush the contact plate towards the inside case of the frame.



STEP 14 Reinstalled the zipper strip straps by pushing with your finger's tips into the outer edges of the contact plate. Properly snapping the zipper strip straps flush into place.



STEP 15 Reinstall the door into the frame. Lift the door and insert the door torque rod into the torque master of the frame.



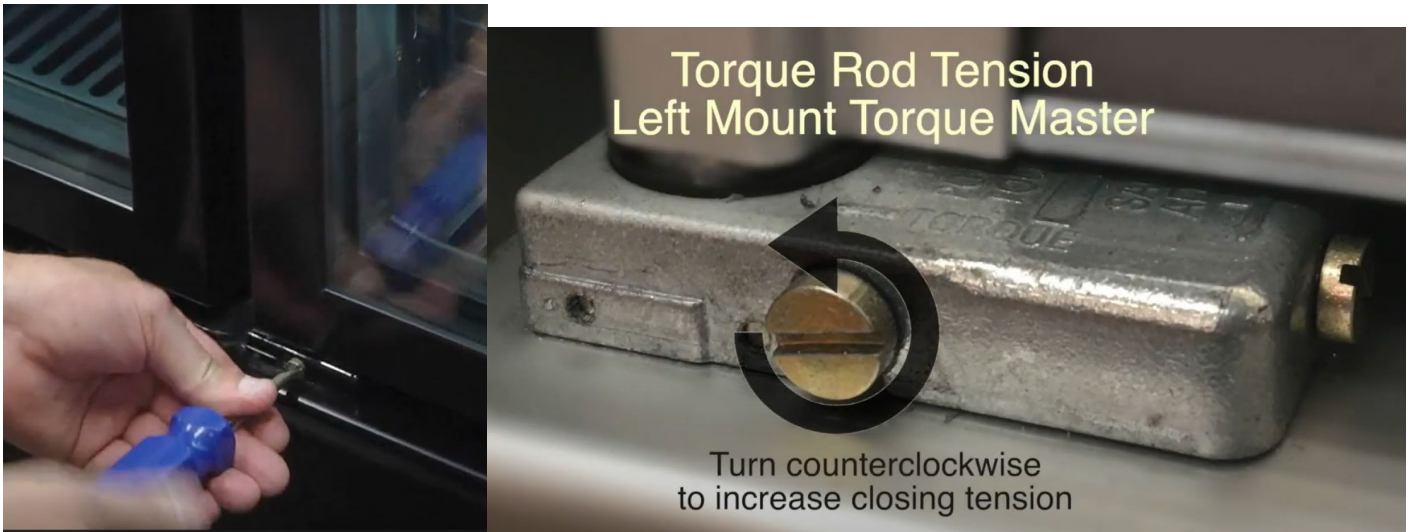
STEP 16 Pivot the door upright to align the top hinge pin into the frame receptacle to engage with the door. The clicking sound will confirm the top door hinge pin has engaged with the frame receptacle by inserting the three electrical prongs.



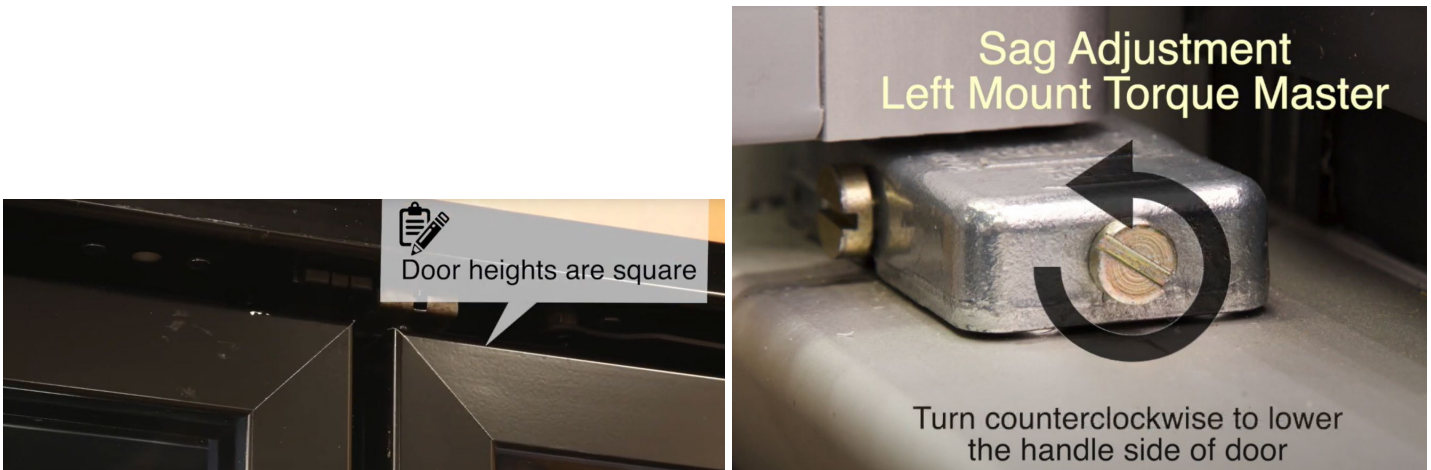
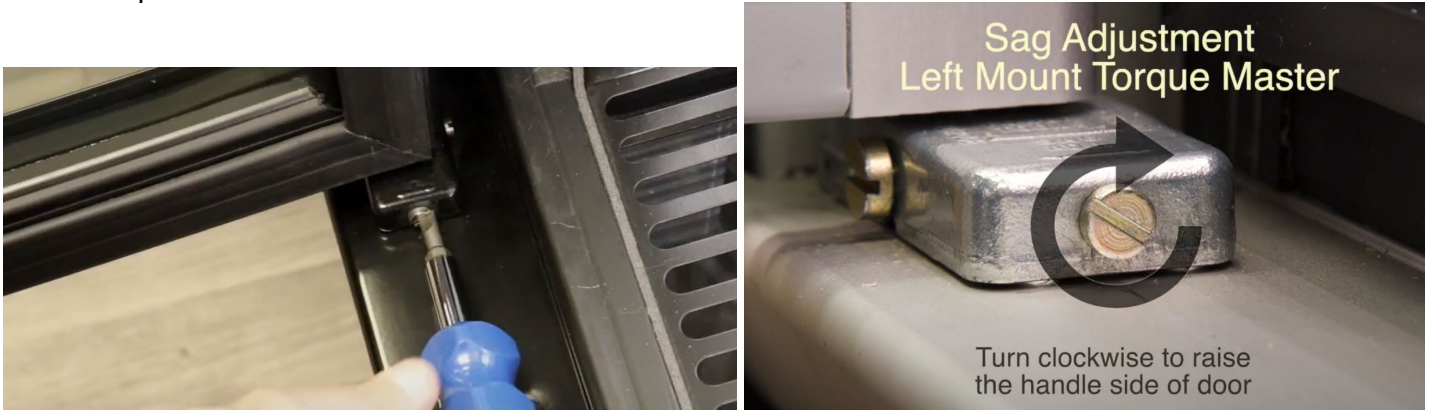
STEP 17 Reinstall the hold open from the door into the frame using the same screw from the shoulder bolt.



STEP 18 Increase the tension of the torque master screw of the bottom of the door by turning screw. Decreasing the tension by turning the screw clockwise. Opening the door about 2 inches and will gently close the door.

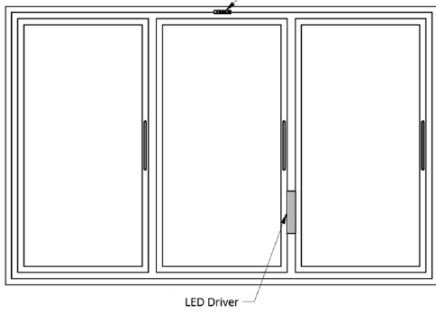


STEP 19 Door Sag adjustment to square the door to align with the opposite door. Turning the screw from the side of the torque master screw. **Note:** The right mount torque master is the opposite direction from the left mount torque master.

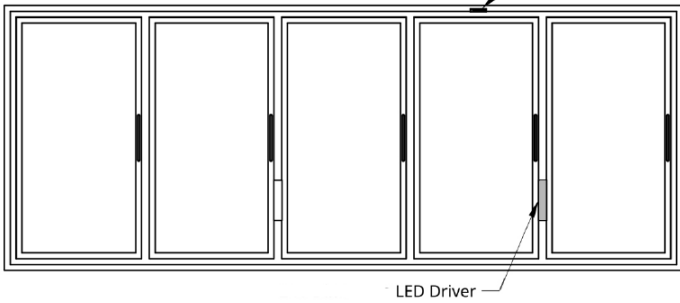


Wiring diagrams and driver location diagrams.

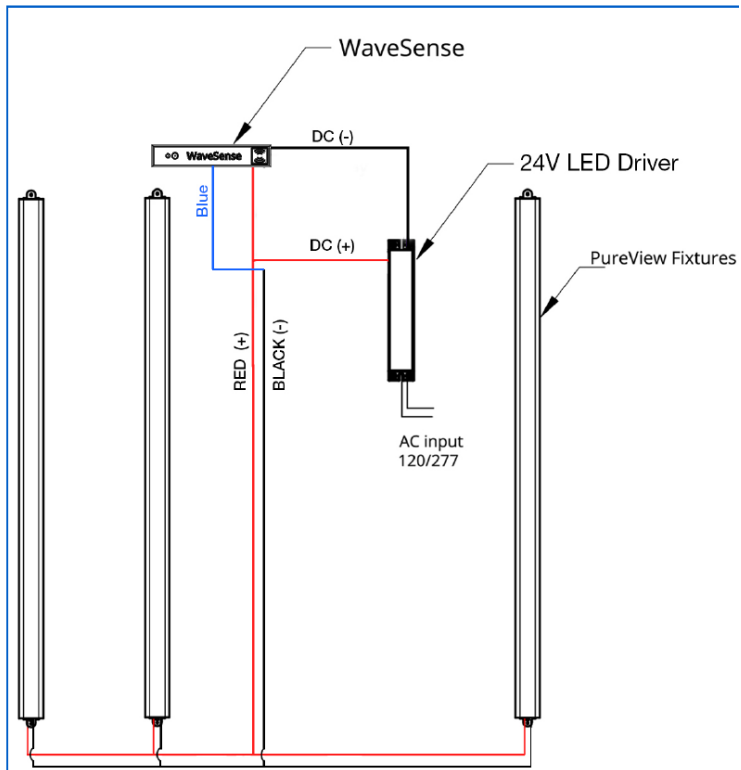
Three Door Cooler



Five Door Cooler



WIRING DIAGRAM



Revisions

Rev.	Description	Date	Orig.	Inc.	Chk.
A	Release	1/30/2026	HT		