



## **RESTAURANT APPLICATION SOLUTIONS**

PRODUCT BROCHURE



Eliason EHH-3 shown in a dining application.

## RESTAURANT DOORS

Senneca Holdings is your one stop shop for all things restaurant doors. From kitchen doors such as cooler and freezer doors, to exterior entrance and exit doors, to the swinging traffic doors we're renowned for, let us make your job easier by taking care of all the details at one time.



### AIRGARD ECONOCLEAR

**TRAFFIC:** Pedestrian, Push Cart

**APPLICATIONS:** Kitchen & Restaurant, Retail & Supermarket, Industrial & Commercial, Cooler, Freezer,

**DOOR BODY:** 120" clear PVC vinyl

**HINGE:** Top Mounted Gravity Hinge

**AVAILABLE OPTIONS:** Low Temperature or Anti-Static PVC material, impact plates



### EHH-3

**TRAFFIC:** Pedestrian, Push Cart

**APPLICATIONS:** Kitchen & Restaurant,

**DOOR BODY:** 75" sustainable, moisture resistant, composite wood core, 1" total door thickness, full length stainless steel panel (both sides)

**WINDOW:** 9" x 14" flush window, clear acrylic, double glazed

**HINGE:** Eliason Hidden Hinge™

**AVAILABLE OPTIONS:** Full length whiteboard panel (one side) with full length stainless on customer-facing side.



### ENG-1

**TRAFFIC:** Pedestrian & Push Cart

**APPLICATIONS:** Kitchen & Restaurant

**DOOR BODY:** Rigid PVC frame with honeycomb polymer core, 1-1/2" total door thickness. .032" decorative high-pressure laminate (both sides), with black plastic edge molding and 8" high black plastic scuff plate (both sides)

**WINDOW:** 9" x 14" flush window, clear acrylic, double glazed

**HINGE:** Eliason Hidden Hinge™

**AVAILABLE OPTIONS:** Various window sizes (including ADA Compliant) and scuff plates in various heights.



### SCP-15

**TRAFFIC:** Pedestrian & Push Cart

**APPLICATIONS:** Kitchen & Restaurant

**DOOR BODY:** .75" sustainable, moisture resistant, composite wood core, 1" total door thickness. .032" decorative high-pressure laminate (both sides) with black plastic edge molding and 8" high black plastic scuff plate (both sides)

**WINDOW:** 9" x 14" flush window, clear acrylic, double glazed

**HINGE:** Eliason Hidden Hinge™

**AVAILABLE OPTIONS:** Custom size windows, impact plates and other options available.



### SCP / SCG SERIES

**TRAFFIC:** Pedestrian & Push Cart

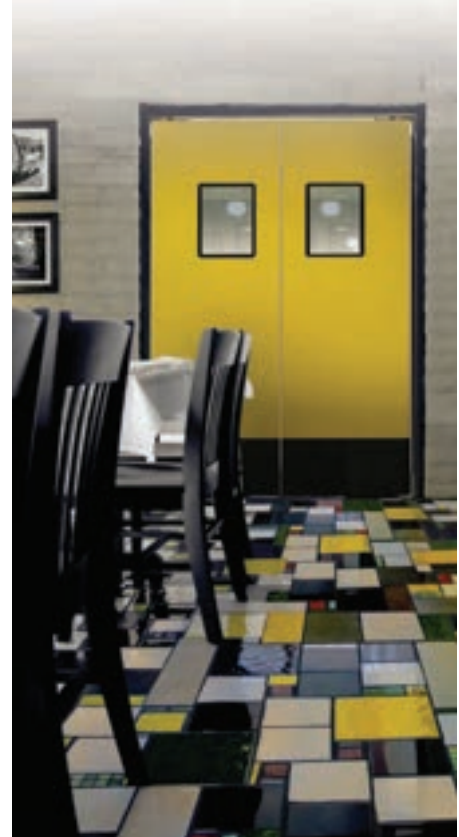
**APPLICATIONS:** Kitchen & Restaurant, Retail & Supermarket

**DOOR BODY:** .75" sustainable, moisture resistant, composite wood core, 1" total door thickness.

**WINDOW:** 9" x 14" gasketed window, clear acrylic

**HINGE:** Eliason Easy Swing® Hinge

**AVAILABLE OPTIONS:** Window options, Impact / Kick Plates, .032" decorative high-pressure laminate (both sides), Full perimeter gasketing (specify SCG series), Graphic Door options available.



Eliason SCP-15 shown in a dining application.



SCP Series shown in a dining to kitchen application with graphic door option.





### FCG SERIES

**TRAFFIC:** Pedestrian, Push Cart, Pallet Jack

**APPLICATIONS:** Kitchen & Restaurant, Retail & Supermarket

**DOOR BODY:** 1-1/2" thick foam insulated core, Full length stainless steel panels (both sides), Perimeter seal

**WINDOW:** 9" x 14" clear acrylic set in black rubber molding

**HINGE:** Eliason Easy Swing® Hinge

**AVAILABLE OPTIONS:** Teardrop Bumpers, Jamb Guards / Push Plates, Window Options



### DSP-3

**TRAFFIC:** Pedestrian, Push Cart, Pallet Jack

**APPLICATIONS:** Kitchen & Restaurant, Retail & Supermarket

**DOOR BODY:** 16 gauge stainless steel with delta formed vertical edges.

**WINDOW:** 9" x 14" clear acrylic set in black rubber molding

**HINGE:** Eliason Easy Swing® Hinge

**AVAILABLE OPTIONS:** 11" x 16" diamond shape translucent acrylic windows.



### LWP SERIES

**TRAFFIC:** Pedestrian, Push Cart, Pallet Jack

**APPLICATIONS:** Kitchen & Restaurant, Retail & Supermarket

**DOOR BODY:** .063" thick tempered aluminum alloy with delta formed vertical edges, anodized aluminum finish.

**WINDOW:** 9" x 14" clear acrylic set in black rubber molding

**HINGE:** Eliason Easy Swing® Hinge

**AVAILABLE OPTIONS:** Various window options, 12" high stainless steel base plate (both sides)



Eliason LWP-3 shown with optional elongated window to meet ADA Compliance.



LWP Series shown in a kitchen application.



### P-11 PLUS

**TRAFFIC:** Pedestrian, Push Cart, Pallet Jack

**APPLICATIONS:** Kitchen & Restaurant, Retail & Supermarket, Industrial & Commercial

**DOOR BODY:** High strength polymer cell core with 1/2" PVC frame, 5/8" total door thickness, high impact thermoplastic exterior, galvanized powder coated satin black back spine

**WINDOW:** 14" x 16" clear acrylic set in black rubber molding.

**HINGE:** Eliason Easy Swing® Hinge

**AVAILABLE OPTIONS:** 9" x 30" ADA-Compliant windows, stainless steel back spine



P-11 Plus shown in a dining application.



### DURULITE® RETAILER R25D

**TRAFFIC:** Pedestrian, Push Cart, Pallet Jack

**APPLICATIONS:** Kitchen & Restaurant, Retail & Supermarket, Industrial & Commercial, Cooler & Freezer

**DOOR BODY:** 1/8" thick high-density rotationally molded polyethylene and Non-CFC urethane foam core. Replaceable perimeter edge gasketing, full height backspine.

**HINGE:** V-Cam Hinge System

**AVAILABLE OPTIONS:** Various Window Sizes, Impact / Kick Plates, Teardrop Bumpers, Cart Guards, Locking Devices, 180° x 90° Hardware, SlideTrac Bumpers™



Durulite Retailer R25D shown in a back storage application.





Eliason SCP Cafe Door shown with contour top in kitchen application.



### LWP GATE / CAFE

**TRAFFIC:** Pedestrian

**APPLICATIONS:** Kitchen & Restaurant, Retail & Supermarket

**DOOR BODY:** .063" thick tempered aluminum alloy, shown above with optional high-pressure laminate.

**HINGE:** Eliason Easy Swing® Hinge

**AVAILABLE OPTIONS:** Contour top, .032" decorative high-pressure laminate (both sides). Wide selection of stock laminates available. Custom laminates can be specified.



### P-11 PLUS GATE / CAFE

**TRAFFIC:** Pedestrian & Push Cart

**APPLICATIONS:** Kitchen & Restaurant, Retail & Supermarket

**DOOR BODY:** .5" thick polymer cell core with .5" solid PVC frame, 5/8" total door thickness. High-Impact Thermoplastic exterior (both sides), available in multiple colors. Shown above with optional mounting post.

**HINGE:** Eliason Easy Swing® Hinge

**AVAILABLE OPTIONS:** Mounting Post, Various Color Options



### SCP GATE / CAFE

**TRAFFIC:** Pedestrian & Push Cart

**APPLICATIONS:** Kitchen & Restaurant, Retail & Supermarket

**DOOR BODY:** .75" sustainable, moisture resistant, composite wood core, 1" total door thickness. .032" decorative high-pressure laminate (both sides)

**EDGE TRIM:** Black plastic molding

**HINGE:** Eliason Easy Swing® Hinge

**AVAILABLE OPTIONS:** Contour top and bottom, graphic door model option.



SCP Gate / Cafe shown in a restaurant application with a graphic door option added.



PMP Gate / Cafe shown in a dining / counter application.



### SRP-5000 GATE / CAFE

**TRAFFIC:** Pedestrian & Push Cart

**APPLICATIONS:** Kitchen & Restaurant, Retail & Supermarket

**DOOR BODY:** .5" thick USDA accepted stress relieved high-density, textured polyethylene panels, raised 10" from the floor. Standard 3.5" diameter powder coated gray steel posts that anchor to the floor.

**EDGE TRIM:** Black plastic molding

**HINGE:** Ultra-Soft Touch™ assisted gravity hinge system is "hidden" in back spine.

**AVAILABLE OPTIONS:** Powder coated black and white steel posts, optional panel colors available.





## COLDGUARD SWINGING

**TRAFFIC:** Pedestrian

**APPLICATIONS:** Kitchen & Restaurant, Retail & Supermarket, Food Processing, Institutional, Cold Storage, Industrial

**DOOR BODY:** Thermally neutral fiberglass reinforced pultrusion (FRP) framework with CFC-Free foamed-in-place polyurethane core. Front casings are fiberglass reinforced pultrusions (FRP) with molded polymer plastic thru-wall and mirror image casings. Positive seal magnetic gasket is standard, along with self-lubricating cam lift hinges and standard cold storage latch.

**WINDOW:** Vision panels available in non-heated (cooler) or heated (freezer)

**OTHER:** Meets HR-6 Energy Independence and Security Act Requirements

**AVAILABLE OPTIONS:** Various Cladding Options, Accessory and Hardware Options, 6" Door Thickness for Extreme Cold



Chase ColdGuard Swinging Door shown in cold storage application.



Thermoseal Glass Series line-up shown above.



## THERMOSEAL GLASS

**TRAFFIC:** Pedestrian

**APPLICATIONS:** Retail & Supermarket, Cooler, Freezer

**DOOR BODY:** Aluminum door frame, reversible door swing, automatic hold-open, electrical hinge pin, torque and sag adjust, magnetic door gaskets, standard 27" deep shelving.

**OTHER:** EISA Compliant ETL Listed and Intertek Sanitation Certified.

**AVAILABLE OPTIONS:** 2 or 3 Pane Heated / Non-Heated Glass, Energy-Free Cooler Door, French Door Frame (cooler only), Pass-Thru Door Version, LED Lighting



## DURULITE CR-1400 CORROSION RESISTANT DOOR

The Chase CR-1400 corrosion resistant door system is designed for a virtually maintenance-free lifetime experience. They are custom designed to optimize your heavy-duty interior applications. Bolstered by an ultra-high density urethane foam core, CR-1400 are resistant to scratches and dents, as well as corrosive acids, petroleum products and cleaning solvents. They are widely compatible, have a broad selection of colors that will not fade, and are manufactured at industry-best speed.

### WHY CHOOSE THE CR-1400 CORROSION RESISTANT DOOR?

- Excellent insulation qualities that are environmentally friendly.
- Door panel can retain it's properties from -40°F to 150°F
- Sanitary surface never needs painting and cleans easily with soap and water.
- Lightweight and easy to open



Eliason Stainless Steel Flush Door shown in kitchen application.



### STAINLESS STEEL FLUSH DOORS & FRAME

**TRAFFIC:** Pedestrian

**APPLICATIONS:** Restaurant Interior, Restroom, Prep/Dining

**DOOR BODY:** 16 gauge 304 stainless steel (#4 finish) door and frame system with .063" thick aluminum diamond tread kickplate (both sides).

**AVAILABLE OPTIONS:** Window (Prep/Dining), Wide Angle Viewer (Prep/Dining)



Strip Door shown in a walk-in freezer application.



## STRIP DOORS

**TRAFFIC:** Pedestrian, Push Cart, Pallet Jack, Forklift

**APPLICATIONS:** Kitchen & Restaurant, Retail & Supermarket, Industrial & Commercial, Cooler & Freezer

**DOOR BODY:** Strip PVC material of choice, various bracket choices available.

**BRACKET OPTIONS:** Threaded Stud variations, TMI Loc variations, Standard and Heavy Duty Overhead

**MATERIAL OPTIONS:** Standard Clear PVC, Low Temp, Reinforced, Extra Low Temp, Offset Double Ribbed variations, Opaque Black and White, Anti-Static, Weld Screen and Safety Orange.



## MICROSHIELD AIR BARRIER

**TRAFFIC:** Pedestrian, Push Cart, Pallet Jack, Forklift

**APPLICATIONS:** Restaurant, Retail & Supermarket, Food Processing, Institutional

**CONSTRUCTION:** Compact, low-profile, available in 3, 4 and 6 Feet lengths. Standard 110v plug-in units with 2 speed settings. Standard model includes remote and magnetic reed switch for Automatic Activation.

**OTHER:** CSA Listed in Canada and UL Listed in US and Canada.

**AVAILABLE OPTIONS:** Color Options Available



Horizontal Microshield Air Barrier shown in a restaurant application.





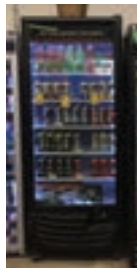
1



## TRAFFIC DOORS

**COMMON APPLICATIONS:**  
Dining to Kitchen,  
Break Room, Food  
Prep Areas, Offices,  
Walk-In Coolers

2



## COLD STORAGE DOORS

**COMMON APPLICATIONS:**  
Reach-in Coolers & Freezers, Drink  
Coolers, Walk-In  
Coolers & Freezers

3



## AIR BARRIERS

**COMMON APPLICATIONS:**  
Front Entrance,  
Entry / Exit, Walk-In  
Coolers





#### 4 HMF EXPRESS DOORS

**COMMON APPLICATIONS:**  
Restrooms, Pharmacy, Break Rooms, Entry / Exit, Exterior Fire Doors, Fire Corridor, Electrical Room



#### 5 STAINLESS STEEL FLUSH DOORS & FRAMES

**COMMON APPLICATIONS:**  
Prep / Dining, Restroom, Back Area, Offices



#### 6 STRIP DOORS

**COMMON APPLICATIONS:**  
Stock Room, Back Area, Walk-In Coolers & Freezers

**OTHER INDUSTRIES SERVED:**



**SUPERMARKETS / GROCERY STORES**



**RETAIL**



**INDUSTRIAL**



**COMMERCIAL**



**KITCHEN**



**RESTAURANT**

In our continuing effort to improve, some specific ations or descriptions may change. We reserve the right to make changes without notice or recourse.