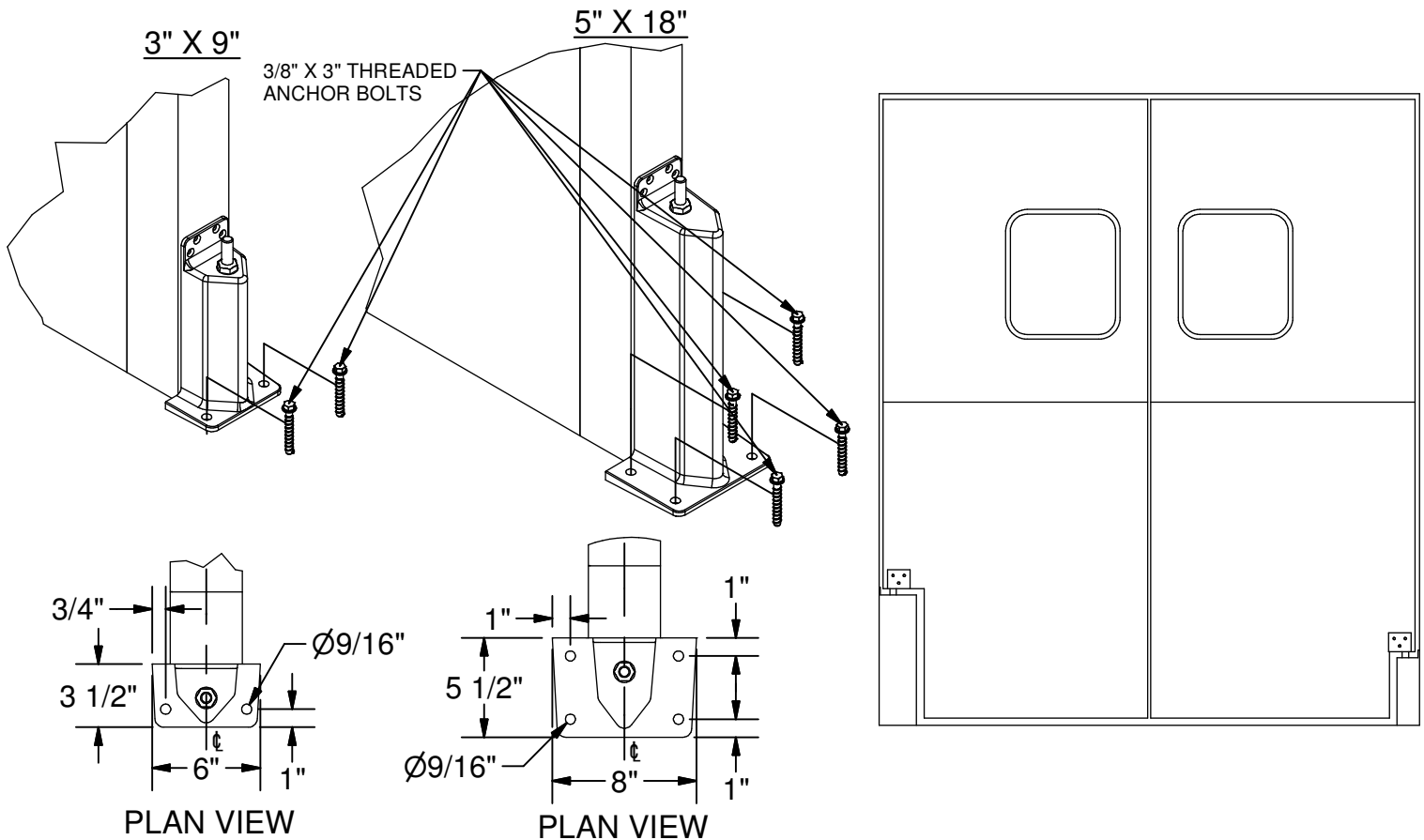


# INSTALLATION INSTRUCTIONS & PART DIAGRAM

## Eliason® *Easy Swing*® Double Action Doors

### 3" X 9" & 5" X 18" JAMB GUARDS



#### **INSTRUCTIONS:**

1. POSITION JAMB GUARD ON THE CENTER LINE OF FINISHED JAMB AS SHOWN IN PLAN VIEW. BE SURE THAT THE JAMB GUARD IS SQUARE WITH THE OPENING.
2. USE THE JAMB GUARD AS A TEMPLATE TO LOCATE HOLES ON THE FLOOR.
3. DRILL A 3/8" HOLE 3-1/2" DEEP TO ALLOW THE THREAD TAPPING DUST TO SETTLE AND THEN BLOW CLEAN USING COMPRESSED AIR.
4. INSERT THE 3/8" X 3" ANCHOR BOLT THROUGH HOLE IN THE BASE OF THE JAMB GUARD AND INTO THE DRILLED HOLE. USING A 9/16" WRENCH, TIGHTEN THE ANCHOR INTO THE BASE UNTIL THE HEX WASHER HEAD MAKES CONTACT.
5. REPEAT STEPS 3 & 4 UNTIL ALL ANCHORS ARE SECURE TO THE BASE OF JAMB GUARD.
6. SECURE TOP OF GUARD TO SIDE JAMBS USING FASTENERS SUPPLIED (AS REQUIRED)

#### **NOTES:**

1. IF JAMB GUARDS ARE USED WITH ALUMINUM ALLOY DOORS NYLON BUSHINGS ARE SUPPLIED TO FIT OVER THE PIN ON TOP OF THE GUARD.
2. BOTH TYPES OF FASTENERS LISTED BELOW ARE SUPPLIED WITH EACH SHIPMENT. (4 OF EACH)
  - #14 X 2-1/2" SHEET METAL SCREWS FOR WOOD JAMBS
  - 1/4"-20 SELF TAPPING SCREWS FOR METAL JAMBS  
(PRE DRILL A 7/32" PILOT HOLE WHEN USING SELF TAPPING SCREWS.)

**ELIASON**  
CORPORATION

www.eliasoncorp.com  
9229 Shaver road, Kalamazoo, MI 49003  
Telephone: 269-327-7003 / 800-828-3655  
Fax: 269-327-7006 / 800-828-3577  
E-mail: doors@eliasoncorp.com